

Product datasheet for **TA366870**

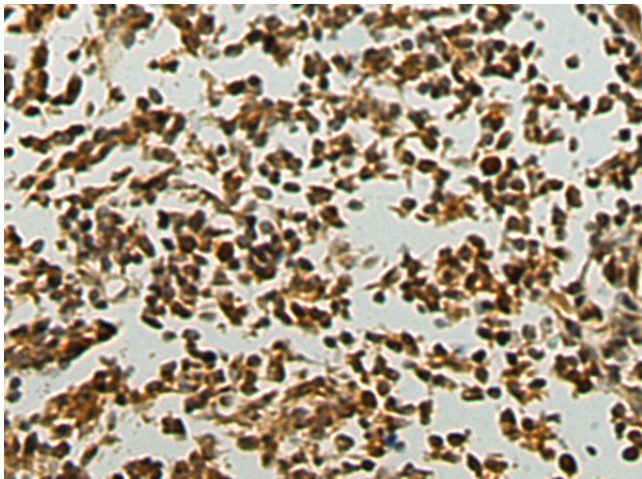
PALB2 Rabbit Polyclonal Antibody

Product data:

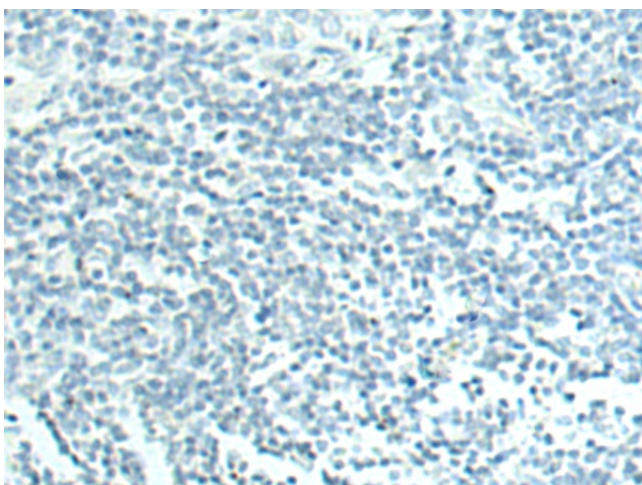
Product Type:	Primary Antibodies
Applications:	IHC
Recommended Dilution:	IHC: 50-200 Positive control: Human thyroid cancer Predicted cell location: Nucleus
Reactivity:	Human, Mouse
Host:	Rabbit
Isotype:	IgG
Clonality:	Polyclonal
Immunogen:	Synthetic peptide of human PALB2
Formulation:	pH7.4 PBS, 0.05% NaN ₃ , 40% Glycerol
Concentration:	lot specific
Purification:	Antigen affinity purification
Conjugation:	Unconjugated
Storage:	Store at -20°C.
Stability:	1 year
Gene Name:	partner and localizer of BRCA2
Database Link:	Entrez Gene 79728 Human Q86YC2
Background:	This gene encodes a protein that may function in tumor suppression. This protein binds to and colocalizes with the breast cancer 2 early onset protein (BRCA2) in nuclear foci and likely permits the stable intranuclear localization and accumulation of BRCA2.
Synonyms:	DKFZp6671166; DKFZp686E1054; FANCN; FLJ21816



[View online »](#)

Product images:

Immunohistochemistry of paraffin-embedded Human thyroid cancer using TA366870 (PALB2 Antibody) at dilution 1/60 (Original magnification: ×200)



Immunohistochemistry of paraffin-embedded Human thyroid cancer using TA366870 (PALB2 Antibody) at dilution 1/60, treated with synthetic peptide. (Original magnification: ×200)