

## Product datasheet for **TA366869**

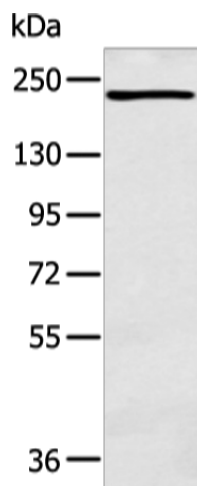
### NCOR2 Rabbit Polyclonal Antibody

#### Product data:

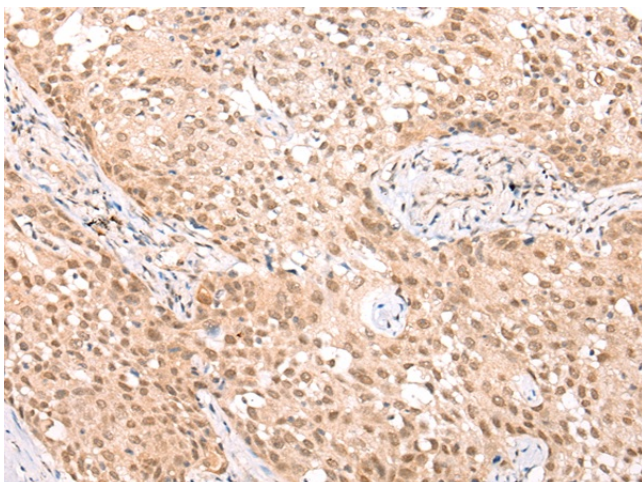
Product Type:	Primary Antibodies
Applications:	IHC, WB
Recommended Dilution:	WB: 200-1000 WB positive control: K562 cell IHC: 25-100 Positive control: Human lung cancer Predicted cell location: Nucleus
Reactivity:	Human
Host:	Rabbit
Isotype:	IgG
Clonality:	Polyclonal
Immunogen:	Synthetic peptide of human NCOR2
Formulation:	pH7.4 PBS, 0.05% NaN <sub>3</sub> , 40% Glycerol
Concentration:	lot specific
Purification:	Antigen affinity purification
Conjugation:	Unconjugated
Storage:	Store at -20°C.
Stability:	1 year
Predicted Protein Size:	275 kDa
Gene Name:	nuclear receptor corepressor 2
Database Link:	<a href="#">Entrez Gene 9612 Human Q9Y618</a>
Background:	This gene encodes a nuclear receptor co-repressor that mediates transcriptional silencing of certain target genes. The encoded protein is a member of a family of thyroid hormone- and retinoic acid receptor-associated co-repressors. This protein acts as part of a multisubunit complex which includes histone deacetylases to modify chromatin structure that prevents basal transcriptional activity of target genes.
Synonyms:	CTG26; N-CoR2; SMAP270; SMRT; SMRTE; SMRTE-tau; TNRC14; TRAC; TRAC-1; TRAC1



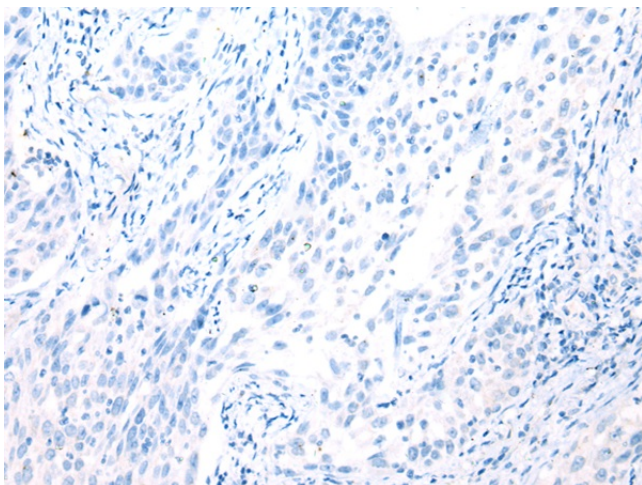
[View online »](#)

**Product images:**

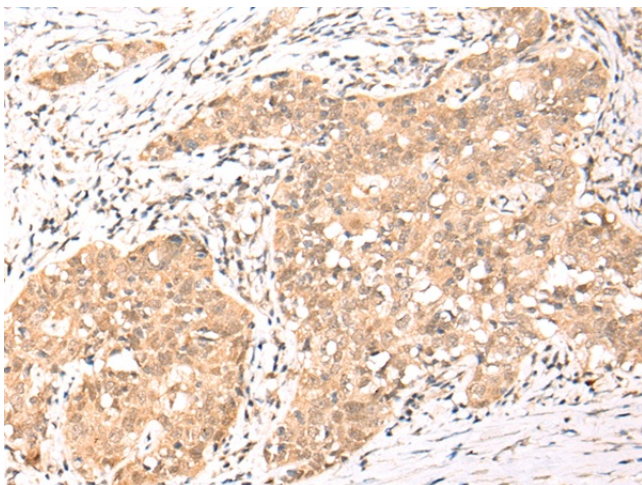
Gel: 6%SDS-PAGE  
Lysate: 40  $\mu$ g  
Lane: K562 cell  
Primary antibody: TA366869 (NCOR2 Antibody) at dilution 1/350  
Secondary antibody: Goat anti rabbit IgG at 1/8000 dilution  
Exposure time: 1 minute



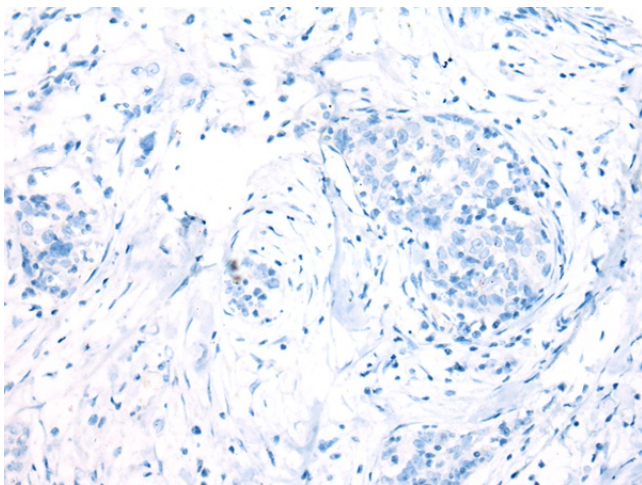
Immunohistochemistry of paraffin-embedded Human lung cancer tissue using TA366869 (NCOR2 Antibody) at dilution 1/35 (Original magnification:  $\times$ 200)



Immunohistochemistry of paraffin-embedded Human lung cancer tissue using TA366869 (NCOR2 Antibody) at dilution 1/35, treated with synthetic peptide. (Original magnification: ×200)



Immunohistochemistry of paraffin-embedded Human esophagus cancer tissue using TA366869 (NCOR2 Antibody) at dilution 1/35 (Original magnification: ×200)



Immunohistochemistry of paraffin-embedded Human esophagus cancer tissue using TA366869 (NCOR2 Antibody) at dilution 1/35, treated with synthetic peptide. (Original magnification: ×200)