

## Product datasheet for **TA366860**

### CD63 Rabbit Polyclonal Antibody

#### Product data:

|                         |  |
|-------------------------|--|
| Product Type:           | Primary Antibodies   |
| Applications:           | IHC, WB  |
| Recommended Dilution:   | WB: 500-2000<br>WB positive control: Mouse kidney tissue lysate<br>IHC: 50-100<br>Positive control: Human liver cancer<br>Predicted cell location: Cytoplasm |
| Reactivity:             | Human, Mouse   |
| Host:                   | Rabbit   |
| Isotype:                | IgG  |
| Clonality:              | Polyclonal   |
| Immunogen:              | Synthetic peptide of human CD63  |
| Formulation:            | pH7.4 PBS, 0.05% NaN <sub>3</sub> , 40% Glycerol   |
| Concentration:          | lot specific   |
| Purification:           | Antigen affinity purification  |
| Conjugation:            | Unconjugated   |
| Storage:                | Store at -20°C.  |
| Stability:              | 1 year   |
| Predicted Protein Size: | 26 kDa   |
| Gene Name:              | CD63 molecule  |
| Database Link:          | <a href="#">Entrez Gene 967 Human P08962</a>   |



[View online »](#)

**Background:**

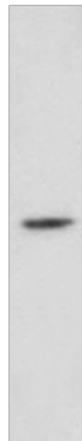
The protein encoded by this gene is a member of the transmembrane 4 superfamily, also known as the tetraspanin family. Most of these members are cell-surface proteins that are characterized by the presence of four hydrophobic domains. The proteins mediate signal transduction events that play a role in the regulation of cell development, activation, growth and motility. The encoded protein is a cell surface glycoprotein that is known to complex with integrins. It may function as a blood platelet activation marker. Deficiency of this protein is associated with Hermansky-Pudlak syndrome. Also this gene has been associated with tumor progression. Alternative splicing results in multiple transcript variants encoding different protein isoforms.

**Synonyms:**

granulophysin; LAMP-3; ME491; MLA1; OMA81H; tetraspanin-30; Tspan-30; TSPAN30

**Product images:**

kDa

95—  
72—  
55—  
36—  
28—  
17—  
10—

Gel: 12%SDS-PAGE

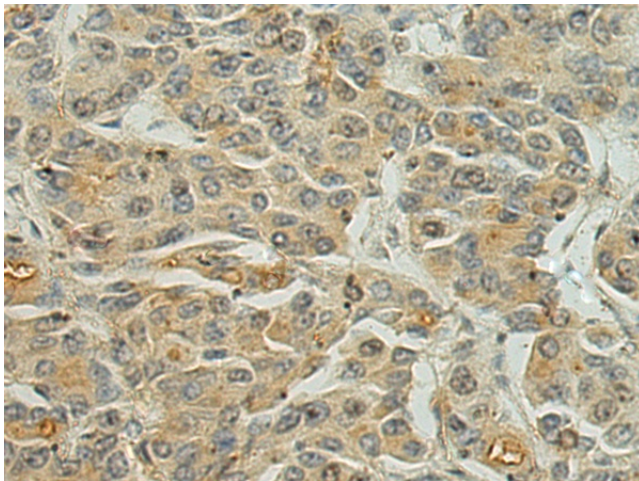
Lysate: 40 µg

Lane: Mouse kidney tissue lysate

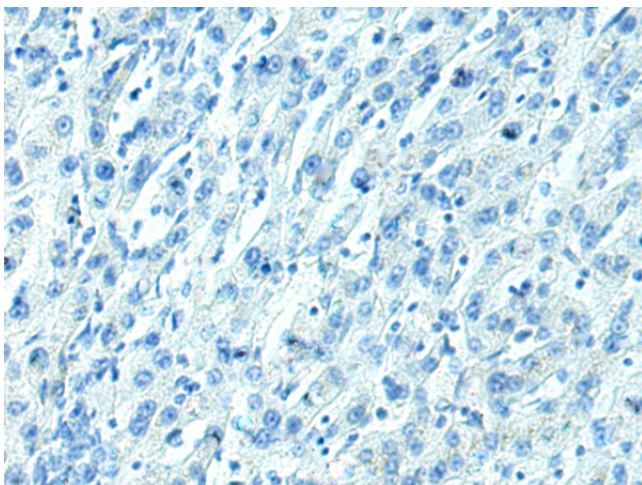
Primary antibody: TA366860 (CD63 Antibody) at dilution 1/800

Secondary antibody: Goat anti rabbit IgG at 1/5000 dilution

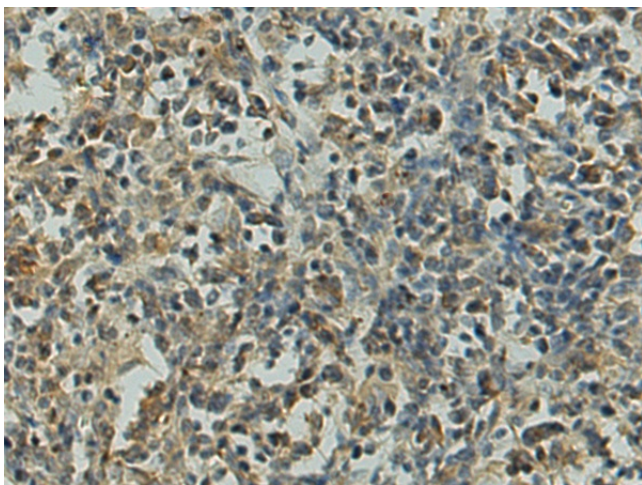
Exposure time: 6 minutes



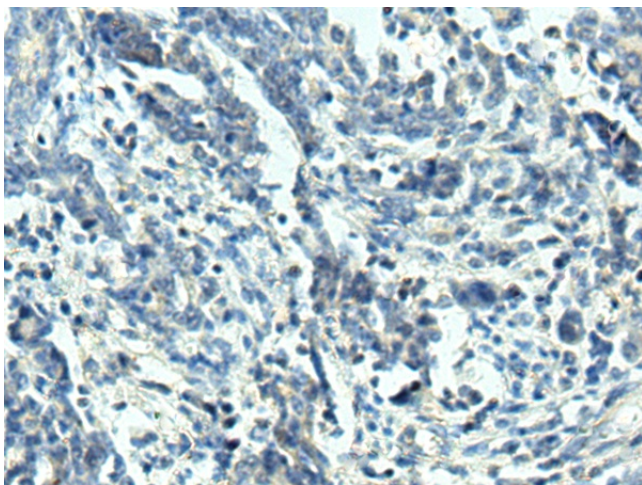
Immunohistochemistry of paraffin-embedded Human liver cancer tissue using TA366860 (CD63 Antibody) at dilution 1/35 (Original magnification: ×200)



Immunohistochemistry of paraffin-embedded Human liver cancer tissue using TA366860 (CD63 Antibody) at dilution 1/35, treated with synthetic peptide. (Original magnification: ×200)



Immunohistochemistry of paraffin-embedded Human gastric cancer tissue using TA366860 (CD63 Antibody) at dilution 1/35 (Original magnification: ×200)



Immunohistochemistry of paraffin-embedded Human gastric cancer tissue using TA366860 (CD63 Antibody) at dilution 1/35, treated with synthetic peptide. (Original magnification: ×200)