

Product datasheet for **TA366846S**

CGK2 (PRKG2) Rabbit Polyclonal Antibody

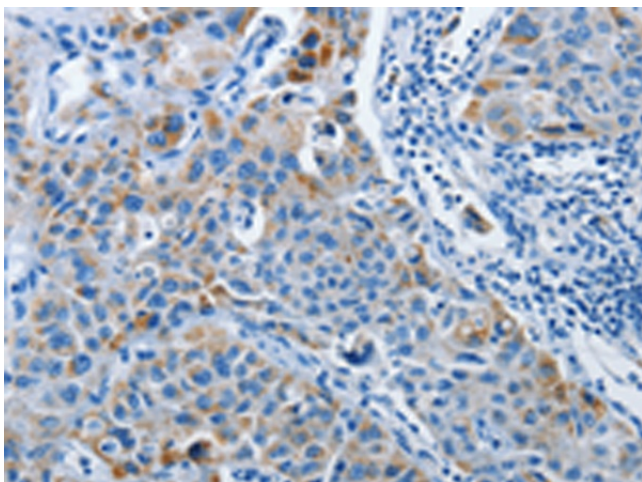
Product data:

Product Type:	Primary Antibodies
Applications:	IHC
Recommended Dilution:	IHC: 15-50 Positive control: Human liver cancer Predicted cell location: Cytoplasm
Reactivity:	Human, Mouse, Rat
Host:	Rabbit
Isotype:	IgG
Clonality:	Polyclonal
Immunogen:	Synthetic peptide of human PRKG2
Formulation:	pH7.4 PBS, 0.05% NaN ₃ , 40% Glycerol
Purification:	Antigen affinity purification
Conjugation:	Unconjugated
Storage:	Store at -20°C.
Stability:	1 year
Gene Name:	protein kinase, cGMP-dependent, type II
Database Link:	Entrez Gene 5593 Human Q13237
Background:	cGKII (cGMP-dependent protein kinase type II) is a major receptor of intracellular cGMP and mediates a plethora of physiological responses. cGKII contains a conserved leucine zipper motif at the amino-terminus. It is expressed in small intestine, colon, prostate, and human brain tissues, and the cGKII gene maps to chromosome 4q13.1-q21.1. cGKII has been shown to regulate the ion transport system in the intestine. Myristoylation of the penultimate glycine in cGKII appears to be essential for directing cGKII to the membrane, since cGKII is devoid of any hydrophobic transmembrane domains. The translocation of cGKII from the cytosol to the membrane allows it to function properly in regulating intestinal ion transport.
Synonyms:	cGKII; OTTHUMP00000160807; PRKGR2

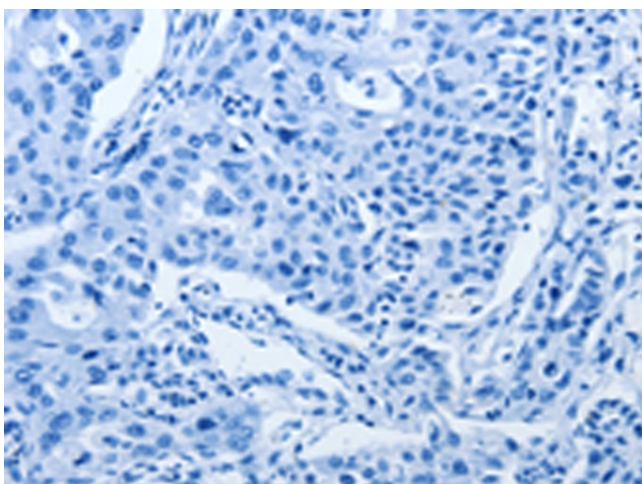


[View online »](#)

Product images:



Immunohistochemistry of paraffin-embedded Human liver cancer tissue using [TA366846] (PRKG2 Antibody) at dilution 1/20 (Original magnification: ×200)



Immunohistochemistry of paraffin-embedded Human liver cancer tissue using [TA366846] (PRKG2 Antibody) at dilution 1/20, treated with synthetic peptide. (Original magnification: ×200)