

## Product datasheet for **TA366827S**

### Peroxiredoxin 2 (PRDX2) Rabbit Polyclonal Antibody

#### Product data:

Product Type:	Primary Antibodies
Applications:	IHC, WB
Recommended Dilution:	WB: 500-2000 WB positive control: 293T, hela and PC3 cells, human liver cancer tissue IHC: 100-300 Positive control: Human liver cancer Predicted cell location: Cytoplasm
Reactivity:	Human, Mouse, Rat
Host:	Rabbit
Isotype:	IgG
Clonality:	Polyclonal
Immunogen:	Synthetic peptide of human PRDX2
Formulation:	pH7.4 PBS, 0.05% NaN <sub>3</sub> , 40% Glycerol
Purification:	Antigen affinity purification
Conjugation:	Unconjugated
Storage:	Store at -20°C.
Stability:	1 year
Predicted Protein Size:	22 kDa
Gene Name:	peroxiredoxin 2
Database Link:	<a href="#">Entrez Gene 7001 Human P32119</a>



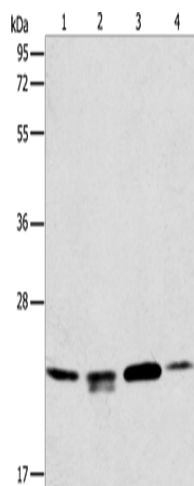
[View online »](#)

**Background:**

This gene encodes a member of the peroxiredoxin family of antioxidant enzymes, which reduce hydrogen peroxide and alkyl hydroperoxides. The encoded protein plays an antioxidant protective role in cells, and it may contribute to the antiviral activity of CD8(+) T-cells. The crystal structure of this protein has been resolved to 2.7 angstroms. This protein prevents hemolytic anemia from oxidative stress by stabilizing hemoglobin, thus making this gene a therapeutic target for patients with hemolytic anemia. This protein may have a proliferative effect and play a role in cancer development or progression. Related pseudogenes have been identified on chromosomes 5, 6, 10 and 13.

**Synonyms:**

MGC4104; NKEF-B; NKEFB; PRP; PRX2; PRXII; TDPX1; torin; TSA

**Product images:**

Gel: 12%SDS-PAGE

Lysate: 40 µg

Lane 1-4: 293T cells

hela cells

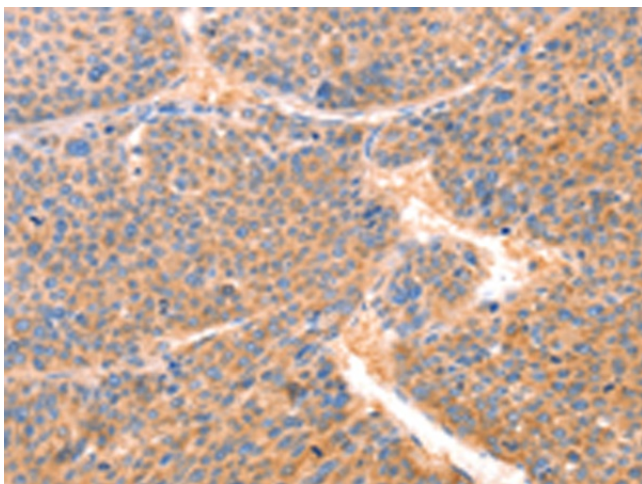
PC3 cells

human liver cancer tissue

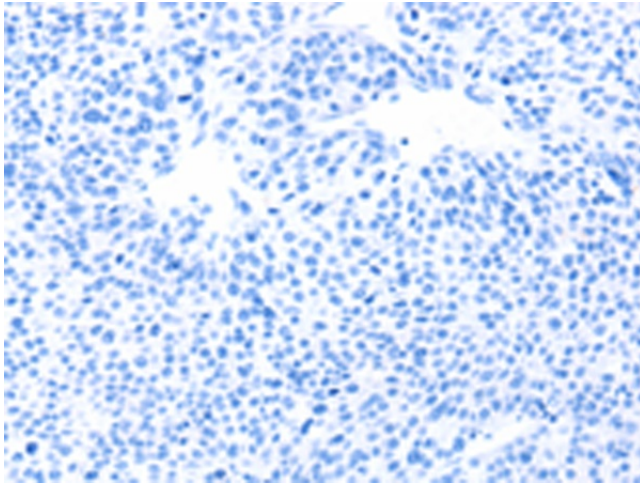
Primary antibody: [TA366827] (PRDX2 Antibody)  
at dilution 1/750

Secondary antibody: Goat anti rabbit IgG at  
1/8000 dilution

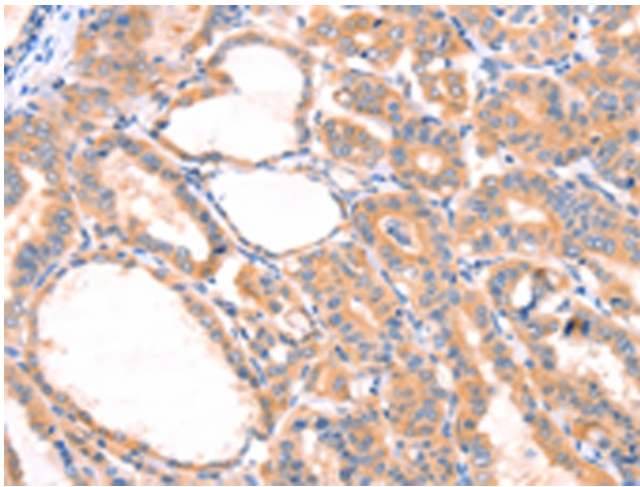
Exposure time: 10 seconds



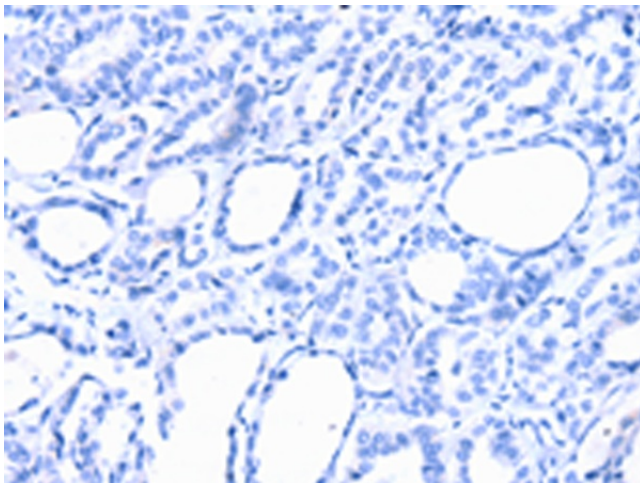
Immunohistochemistry of paraffin-embedded  
Human liver cancer tissue using [TA366827]  
(PRDX2 Antibody) at dilution 1/80 (Original  
magnification: ×200)



Immunohistochemistry of paraffin-embedded Human liver cancer tissue using [TA366827] (PRDX2 Antibody) at dilution 1/80, treated with synthetic peptide. (Original magnification:  $\times 200$ )



Immunohistochemistry of paraffin-embedded Human thyroid cancer tissue using [TA366827] (PRDX2 Antibody) at dilution 1/80 (Original magnification:  $\times 200$ )



Immunohistochemistry of paraffin-embedded Human thyroid cancer tissue using [TA366827] (PRDX2 Antibody) at dilution 1/80, treated with synthetic peptide. (Original magnification:  $\times 200$ )