

## Product datasheet for **TA366823**

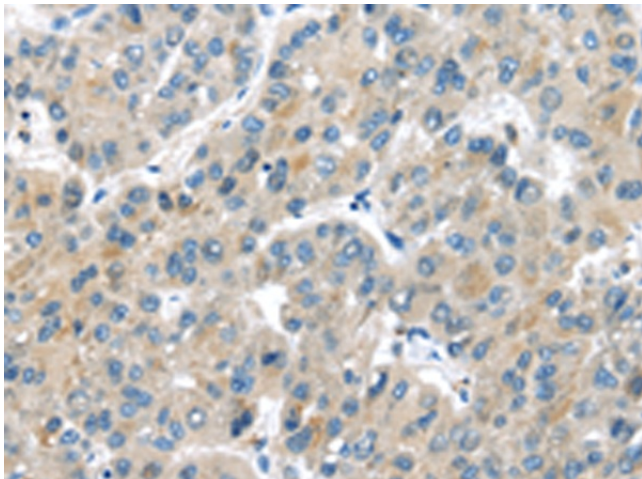
### **MASP2 Rabbit Polyclonal Antibody**

#### **Product data:**

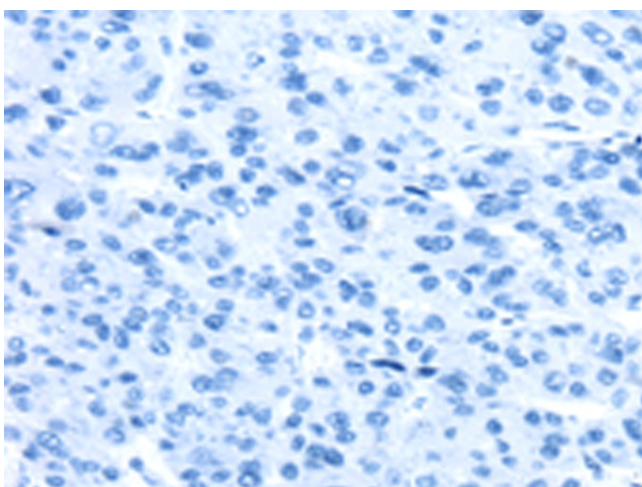
<b>Product Type:</b>	Primary Antibodies
<b>Applications:</b>	IHC
<b>Recommended Dilution:</b>	IHC: 25-100 Positive control: Human liver cancer Predicted cell location: Cytoplasm
<b>Reactivity:</b>	Human, Mouse, Rat
<b>Host:</b>	Rabbit
<b>Isotype:</b>	IgG
<b>Clonality:</b>	Polyclonal
<b>Immunogen:</b>	Synthetic peptide of human MASP2
<b>Formulation:</b>	pH7.4 PBS, 0.05% NaN <sub>3</sub> , 40% Glycerol
<b>Concentration:</b>	lot specific
<b>Purification:</b>	Antigen affinity purification
<b>Conjugation:</b>	Unconjugated
<b>Storage:</b>	Store at -20°C.
<b>Stability:</b>	1 year
<b>Gene Name:</b>	mannan binding lectin serine peptidase 2
<b>Database Link:</b>	<a href="#">Entrez Gene 10747 Human O00187</a>
<b>Background:</b>	The Ra-reactive factor (RARF) is a complement-dependent bactericidal factor that binds to the Ra and R2 polysaccharides expressed by certain enterobacteria. Alternate splicing of this gene results in two transcript variants encoding two RARF components that are involved in the mannan-binding lectin pathway of complement activation. The longer isoform is cleaved into two chains which form a heterodimer linked by a disulfide bond. The encoded proteins are members of the trypsin family of peptidases.
<b>Synonyms:</b>	MAP19; MASP-2; sMAP



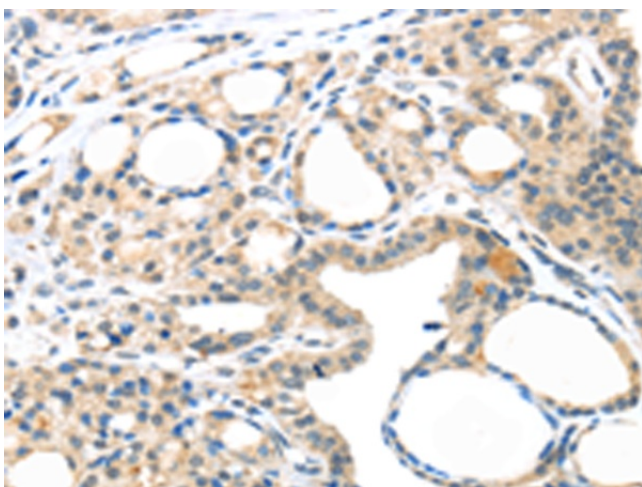
[View online »](#)

**Product images:**

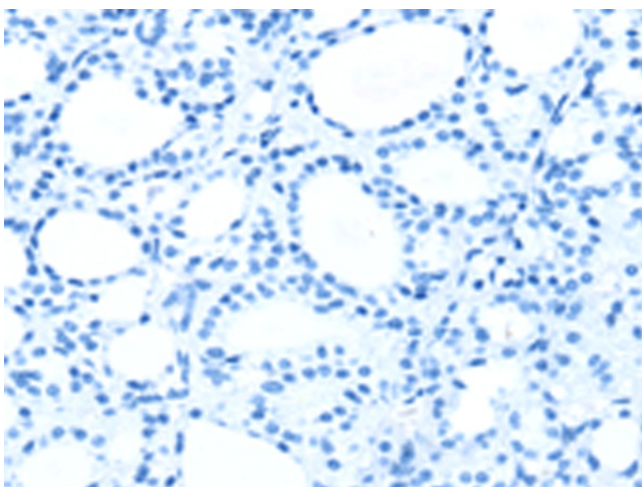
Immunohistochemistry of paraffin-embedded Human liver cancer tissue using TA366823 (MASP2 Antibody) at dilution 1/35 (Original magnification:  $\times 200$ )



Immunohistochemistry of paraffin-embedded Human liver cancer tissue using TA366823 (MASP2 Antibody) at dilution 1/35, treated with synthetic peptide. (Original magnification:  $\times 200$ )



Immunohistochemistry of paraffin-embedded Human thyroid cancer tissue using TA366823 (MASP2 Antibody) at dilution 1/35 (Original magnification:  $\times 200$ )



Immunohistochemistry of paraffin-embedded Human thyroid cancer tissue using TA366823 (MASP2 Antibody) at dilution 1/35, treated with synthetic peptide. (Original magnification:  $\times 200$ )