

Product datasheet for **TA366822S**

LAYN Rabbit Polyclonal Antibody

Product data:

Product Type:	Primary Antibodies
Applications:	IHC, WB
Recommended Dilution:	WB: 500-2000 WB positive control: Jurkat and K562 cell lysates IHC: 50-100 Positive control: Human esophagus cancer Predicted cell location: Cell membrane
Reactivity:	Human, Mouse
Host:	Rabbit
Isotype:	IgG
Clonality:	Polyclonal
Immunogen:	Synthetic peptide of human LAYN
Formulation:	pH7.4 PBS, 0.05% NaN ₃ , 40% Glycerol
Purification:	Antigen affinity purification
Conjugation:	Unconjugated
Storage:	Store at -20°C.
Stability:	1 year
Predicted Protein Size:	43 kDa
Gene Name:	layilin
Database Link:	Entrez Gene 143903 Human Q6UX15



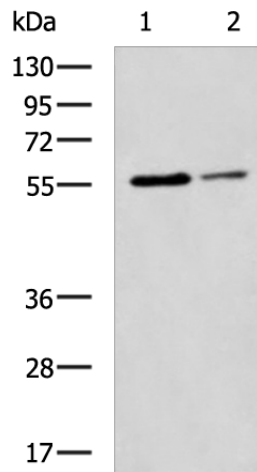
[View online »](#)

Background:

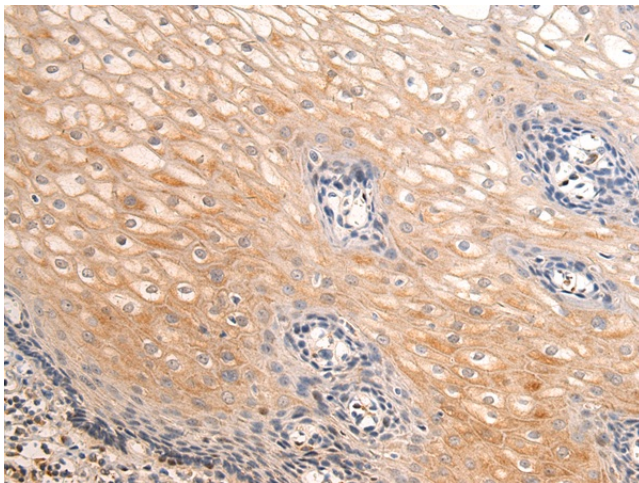
Layilin is a recently cloned ~55-kDa membrane-binding partner for talin (Borowsky and Hynes, 1998) that is widely expressed in different cell types and tissue extracts. It is found in peripheral ruffles of spreading cells and is recruited to membrane ruffles in cells induced to migrate in in vitro wounding experiments. Layilin colocalizes with talin in ruffles and binds to talin's ~50-kDa head domain (amino acids 280–435). Other parts of talin (the ~220-kDa tail fragment) can bind β -integrin cytoplasmic tails, vinculin, and F-actin and hence form an integrin-cytoskeleton linkage at sites of cell-substratum contact. Layilin's extracellular domain is homologous with the carbohydrate-recognition domains (CRD) of C-type lectins. Receptor for hyaluronate.

Synonyms:

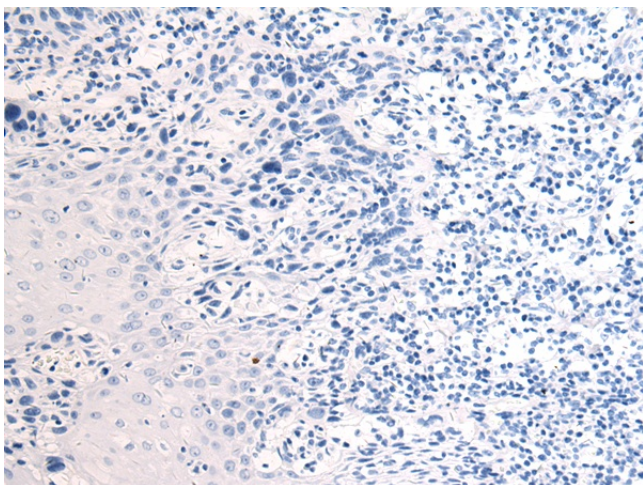
FLJ30977; FLJ31092; layilin

Product images:


Gel: 8%SDS-PAGE
 Lysate: 40 μ g
 Lane 1-2: Jurkat and K562 cell lysates
 Primary antibody: [TA366822] (LAYN Antibody) at dilution 1/700
 Secondary antibody: Goat anti rabbit IgG at 1/5000 dilution
 Exposure time: 2 minutes



Immunohistochemistry of paraffin-embedded Human esophagus cancer tissue using [TA366822] (LAYN Antibody) at dilution 1/50 (Original magnification: \times 200)



Immunohistochemistry of paraffin-embedded Human esophagus cancer tissue using [TA366822] (LAYN Antibody) at dilution 1/50, treated with synthetic peptide. (Original magnification: $\times 200$)