

## Product datasheet for **TA366821**

### Stathmin 1 (STMN1) Rabbit Polyclonal Antibody

#### Product data:

Product Type:	Primary Antibodies
Applications:	IHC, WB
Recommended Dilution:	WB: 500-2000 WB positive control: Human fetal brain tissue IHC: 25-100 Positive control: Human brain Predicted cell location: Cytoplasm
Reactivity:	Human, Mouse, Rat
Host:	Rabbit
Isotype:	IgG
Clonality:	Polyclonal
Immunogen:	Synthetic peptide of human STMN1
Formulation:	pH7.4 PBS, 0.05% NaN <sub>3</sub> , 40% Glycerol
Concentration:	lot specific
Purification:	Antigen affinity purification
Conjugation:	Unconjugated
Storage:	Store at -20°C.
Stability:	1 year
Predicted Protein Size:	17 kDa
Gene Name:	stathmin 1
Database Link:	<a href="#">Entrez Gene 3925 Human P16949</a>

**Background:** This gene belongs to the stathmin family of genes. It encodes a ubiquitous cytosolic phosphoprotein proposed to function as an intracellular relay integrating regulatory signals of the cellular environment. The encoded protein is involved in the regulation of the microtubule filament system by destabilizing microtubules. It prevents assembly and promotes disassembly of microtubules. Multiple transcript variants encoding different isoforms have been found for this gene.



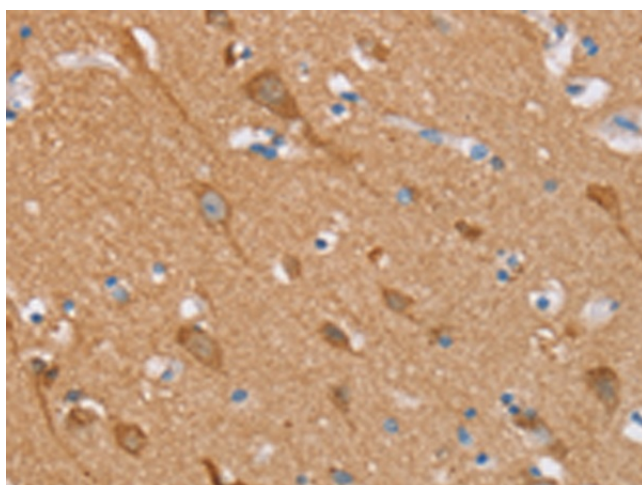
[View online »](#)

**Synonyms:** C1orf215; FLJ32206; Lag; LAP18; metablastin; MGC138869; MGC138870; OP18; OTTHUMP00000008530; PP17; PP19; PR22; prosolin; SMN

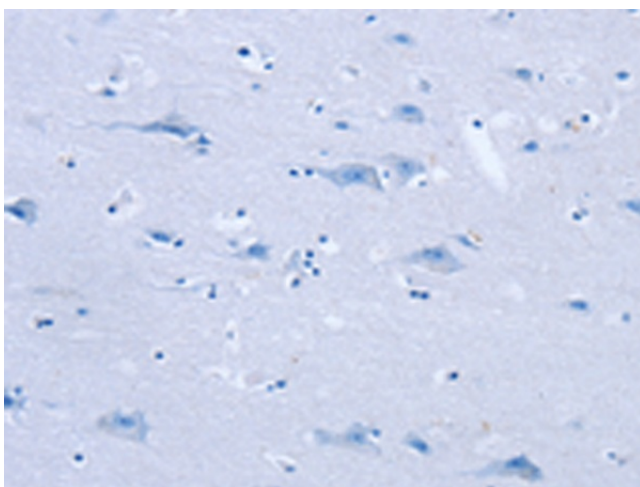
**Product images:**



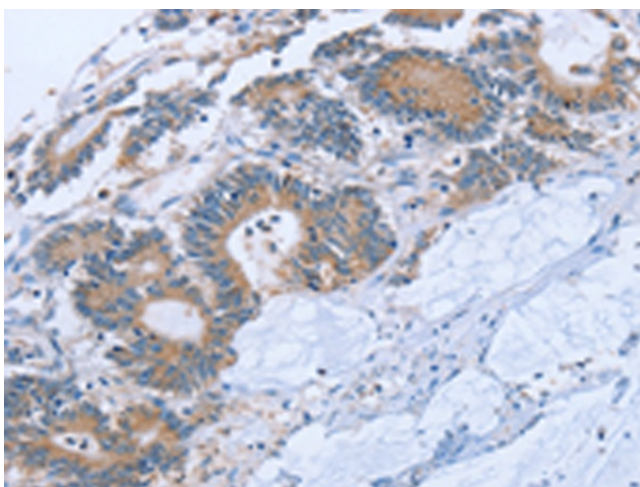
Gel: 10%SDS-PAGE  
 Lysate: 40 µg  
 Lane: Human fetal brain tissue  
 Primary antibody: TA366821 (STMN1 Antibody) at dilution 1/200  
 Secondary antibody: Goat anti rabbit IgG at 1/8000 dilution  
 Exposure time: 10 seconds



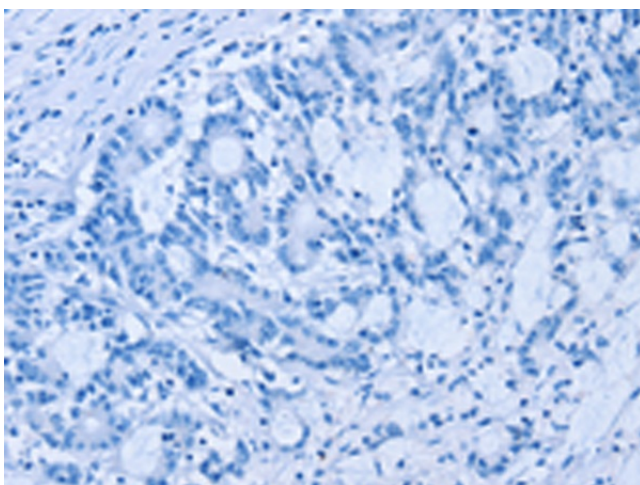
Immunohistochemistry of paraffin-embedded Human brain tissue using TA366821 (STMN1 Antibody) at dilution 1/20 (Original magnification: ×200)



Immunohistochemistry of paraffin-embedded Human brain tissue using TA366821 (STMN1 Antibody) at dilution 1/20, treated with synthetic peptide. (Original magnification:  $\times 200$ )



Immunohistochemistry of paraffin-embedded Human colon cancer tissue using TA366821 (STMN1 Antibody) at dilution 1/20 (Original magnification:  $\times 200$ )



Immunohistochemistry of paraffin-embedded Human colon cancer tissue using TA366821 (STMN1 Antibody) at dilution 1/20, treated with synthetic peptide. (Original magnification:  $\times 200$ )