

Product datasheet for **TA366815S**

iASPP (PPP1R13L) Rabbit Polyclonal Antibody

Product data:

| | |
|-------------------------|---|
| Product Type: | Primary Antibodies |
| Applications: | IHC, WB |
| Recommended Dilution: | WB: 200-1000 WB positive control: Lncap and hela cells IHC: 25-100 Positive control: Human brain Predicted cell location: Cytoplasm |
| Reactivity: | Human, Mouse |
| Host: | Rabbit |
| Isotype: | IgG |
| Clonality: | Polyclonal |
| Immunogen: | Synthetic peptide of human PPP1R13L |
| Formulation: | pH7.4 PBS, 0.05% NaN ₃ , 40% Glycerol |
| Purification: | Antigen affinity purification |
| Conjugation: | Unconjugated |
| Storage: | Store at -20°C. |
| Stability: | 1 year |
| Predicted Protein Size: | 89 kDa |
| Gene Name: | protein phosphatase 1 regulatory subunit 13 like |
| Database Link: | Entrez Gene 10848 Human Q8WUF5 |

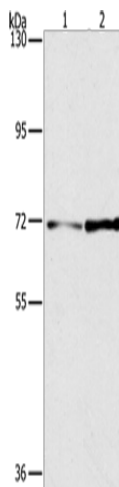
Background: RelA-associated inhibitor is a protein that in humans is encoded by the PPP1R13L gene. Regulator that plays a central role in regulation of apoptosis and transcription via its interaction with NF-kappa-B and p53/TP53 proteins. Blocks transcription of HIV-1 virus by inhibiting the action of both NF-kappa-B and SP1. Also inhibits p53/TP53 function, possibly by preventing the association between p53/TP53 and ASPP1 or ASPP2, and therefore suppressing the subsequent activation of apoptosis. Interacts with RELA NF-kappa-B subunit and with SP1 via its C-terminus part. Interacts with p53/TP53, TP63 and TP73.



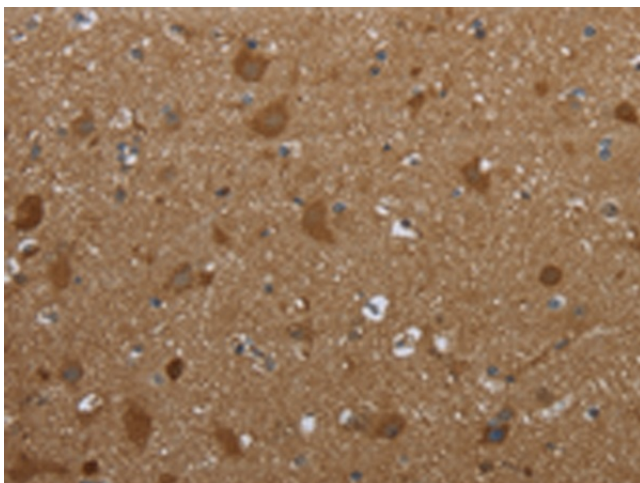
[View online »](#)

Synonyms: IASPP; NKIP1; PPP1R13BL; RAI

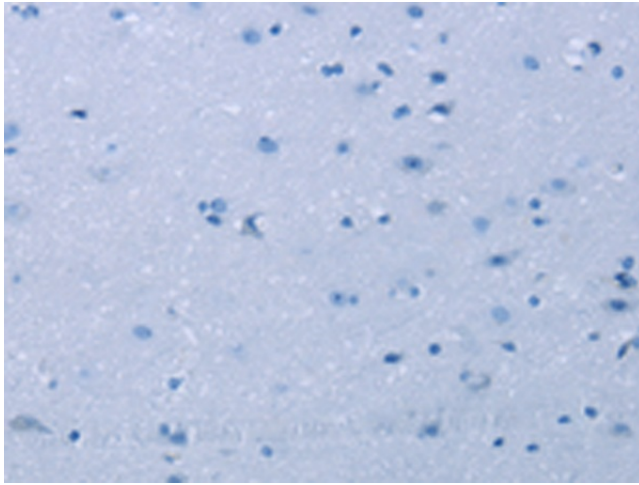
Product images:



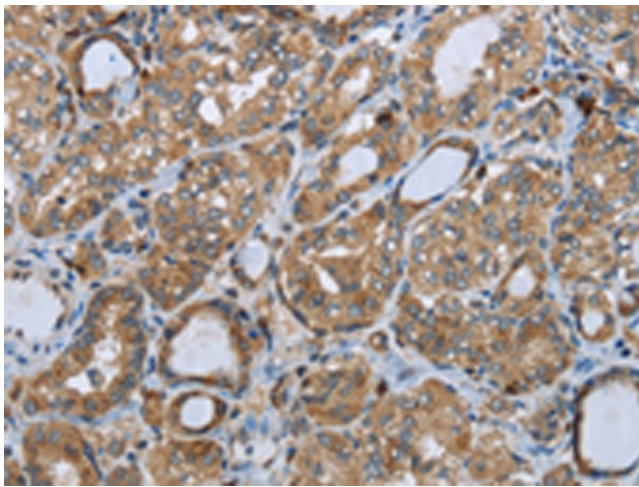
Gel: 6%SDS-PAGE
Lysate: 40 μ g
Lane 1-2: Lncap cells
hela cells
Primary antibody: [TA366815] (PPP1R13L Antibody) at dilution 1/350
Secondary antibody: Goat anti rabbit IgG at 1/8000 dilution
Exposure time: 5 minutes



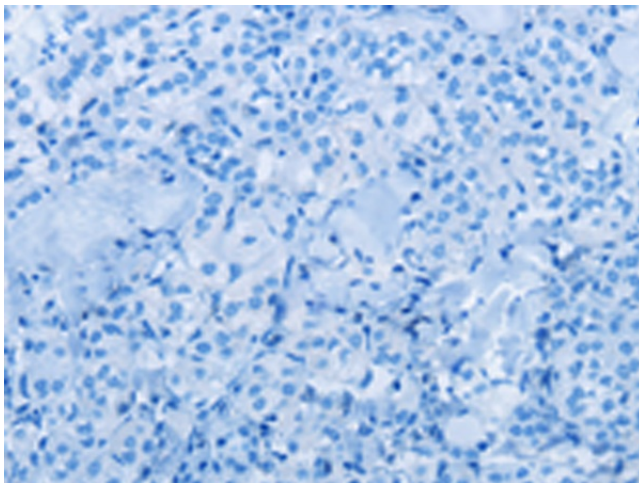
Immunohistochemistry of paraffin-embedded Human brain tissue using [TA366815] (PPP1R13L Antibody) at dilution 1/30 (Original magnification: \times 200)



Immunohistochemistry of paraffin-embedded Human brain tissue using [TA366815] (PPP1R13L Antibody) at dilution 1/30, treated with synthetic peptide. (Original magnification: ×200)



Immunohistochemistry of paraffin-embedded Human thyroid cancer tissue using [TA366815] (PPP1R13L Antibody) at dilution 1/30 (Original magnification: ×200)



Immunohistochemistry of paraffin-embedded Human thyroid cancer tissue using [TA366815] (PPP1R13L Antibody) at dilution 1/30, treated with synthetic peptide. (Original magnification: ×200)