

Product datasheet for **TA366815**

iASPP (PPP1R13L) Rabbit Polyclonal Antibody

Product data:

Product Type:	Primary Antibodies
Applications:	IHC, WB
Recommended Dilution:	WB: 200-1000 WB positive control: Lncap and hela cells IHC: 25-100 Positive control: Human brain Predicted cell location: Cytoplasm
Reactivity:	Human, Mouse
Host:	Rabbit
Isotype:	IgG
Clonality:	Polyclonal
Immunogen:	Synthetic peptide of human PPP1R13L
Formulation:	pH7.4 PBS, 0.05% NaN ₃ , 40% Glycerol
Concentration:	lot specific
Purification:	Antigen affinity purification
Conjugation:	Unconjugated
Storage:	Store at -20°C.
Stability:	1 year
Predicted Protein Size:	89 kDa
Gene Name:	protein phosphatase 1 regulatory subunit 13 like
Database Link:	Entrez Gene 10848 Human Q8WUF5



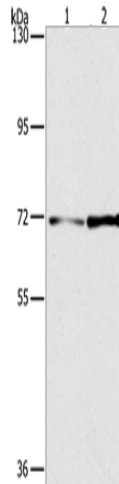
[View online »](#)

Background:

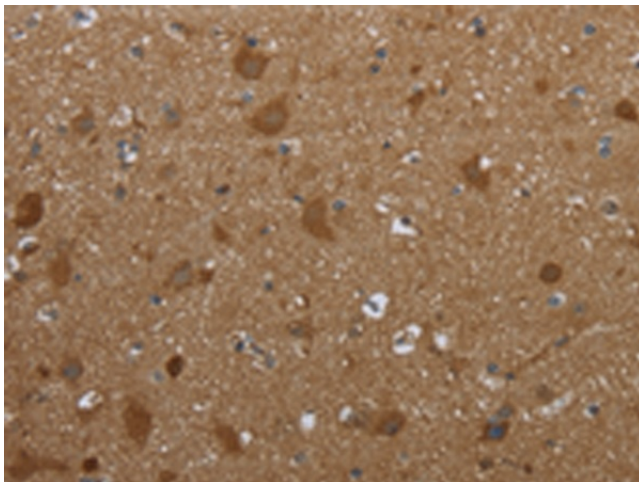
RelA-associated inhibitor is a protein that in humans is encoded by the PPP1R13L gene. Regulator that plays a central role in regulation of apoptosis and transcription via its interaction with NF-kappa-B and p53/TP53 proteins. Blocks transcription of HIV-1 virus by inhibiting the action of both NF-kappa-B and SP1. Also inhibits p53/TP53 function, possibly by preventing the association between p53/TP53 and ASPP1 or ASPP2, and therefore suppressing the subsequent activation of apoptosis. Interacts with RELA NF-kappa-B subunit and with SP1 via its C-terminus part. Interacts with p53/TP53, TP63 and TP73.

Synonyms:

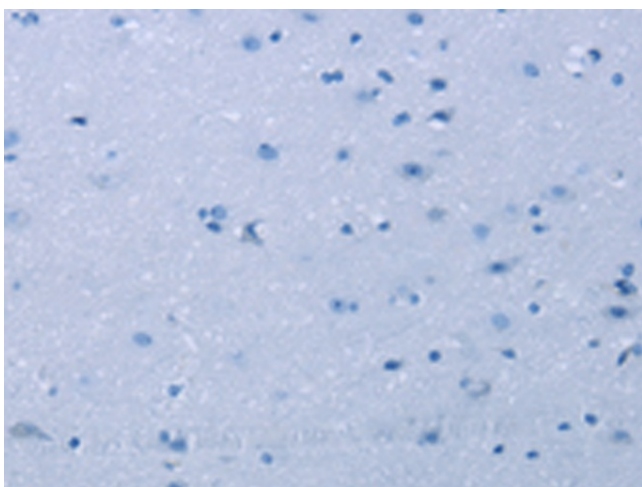
IASPP; NKIP1; PPP1R13BL; RAI

Product images:

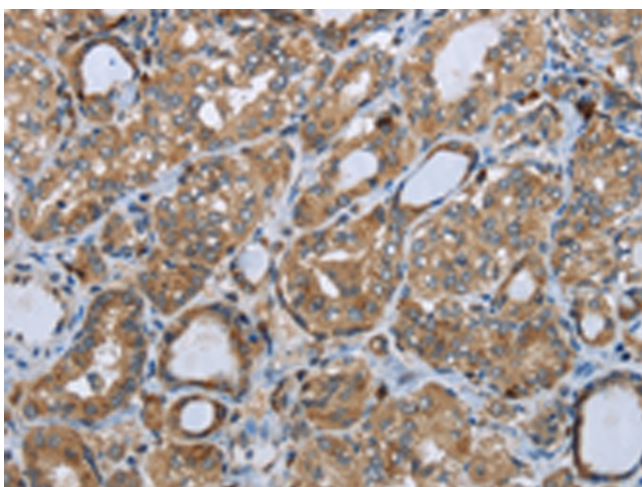
Gel: 6%SDS-PAGE
Lysate: 40 µg
Lane 1-2: Lncap cells
hela cells
Primary antibody: TA366815 (PPP1R13L Antibody)
at dilution 1/350
Secondary antibody: Goat anti rabbit IgG at
1/8000 dilution
Exposure time: 5 minutes



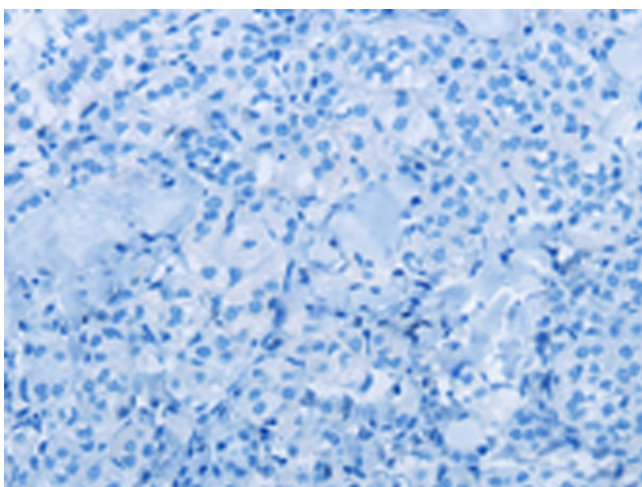
Immunohistochemistry of paraffin-embedded
Human brain tissue using TA366815 (PPP1R13L
Antibody) at dilution 1/30 (Original magnification:
×200)



Immunohistochemistry of paraffin-embedded Human brain tissue using TA366815 (PPP1R13L Antibody) at dilution 1/30, treated with synthetic peptide. (Original magnification: $\times 200$)



Immunohistochemistry of paraffin-embedded Human thyroid cancer tissue using TA366815 (PPP1R13L Antibody) at dilution 1/30 (Original magnification: $\times 200$)



Immunohistochemistry of paraffin-embedded Human thyroid cancer tissue using TA366815 (PPP1R13L Antibody) at dilution 1/30, treated with synthetic peptide. (Original magnification: $\times 200$)