

Product datasheet for **TA366802**

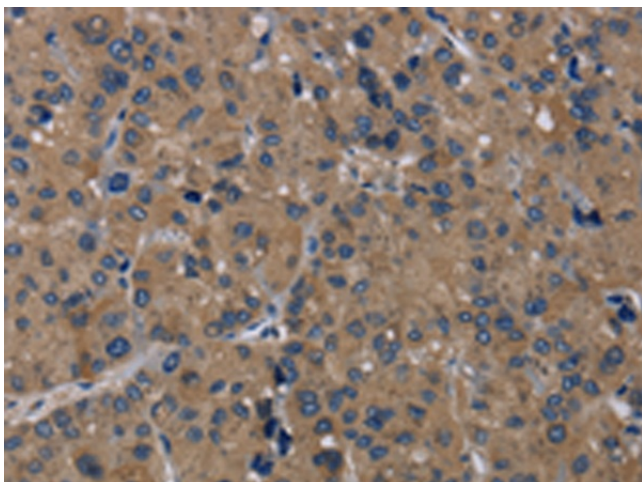
TRPM1 Rabbit Polyclonal Antibody

Product data:

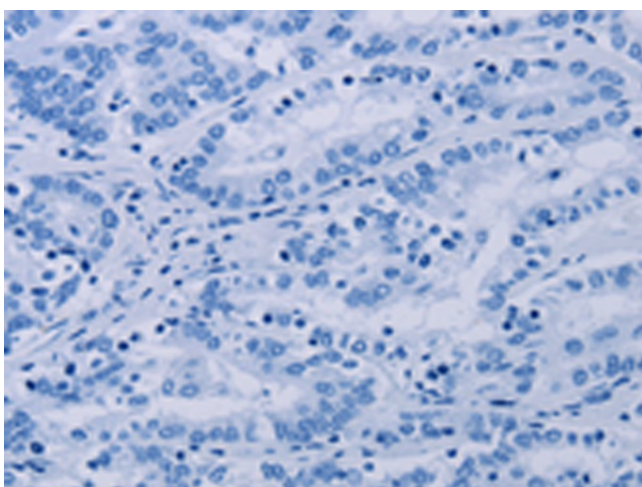
| | |
|-----------------------|--------------------------------------------------------------------------------------------------------------------------------------------------------------------------------------------------------------------------------------------------------------------------------------------------------------------------------------------------------------------------------------------------------------------------------------------------------------------------------------------------------------------------------------------------------|
| Product Type: | Primary Antibodies |
| Applications: | IHC |
| Recommended Dilution: | IHC: 25-100 Positive control: Human liver cancer Predicted cell location: Cytoplasm |
| Reactivity: | Human, Mouse, Rat |
| Host: | Rabbit |
| Isotype: | IgG |
| Clonality: | Polyclonal |
| Immunogen: | Synthetic peptide of human TRPM1 |
| Formulation: | pH7.4 PBS, 0.05% NaN ₃ , 40% Glycerol |
| Concentration: | lot specific |
| Purification: | Antigen affinity purification |
| Conjugation: | Unconjugated |
| Storage: | Store at -20°C. |
| Stability: | 1 year |
| Gene Name: | transient receptor potential cation channel subfamily M member 1 |
| Database Link: | Entrez Gene 4308 Human Q7Z4N2 |
| Background: | This gene encodes a member of the transient receptor potential melastatin subfamily of transient receptor potential ion channels. The encoded protein is a calcium permeable cation channel that is expressed in melanocytes and may play a role in melanin synthesis. Specific mutations in this gene are the cause autosomal recessive complete congenital stationary night blindness-1C. The expression of this protein is inversely correlated with melanoma aggressiveness and as such it is used as a prognostic marker for melanoma metastasis. |
| Synonyms: | LTRPC1; Melastatin-1; MLSN; MLSN1 |



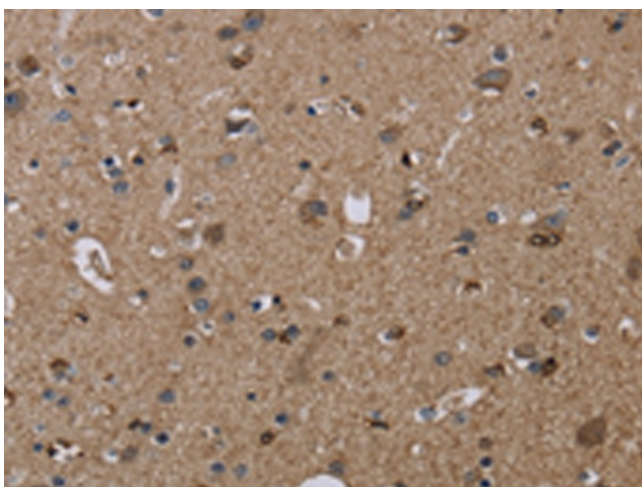
[View online »](#)

Product images:

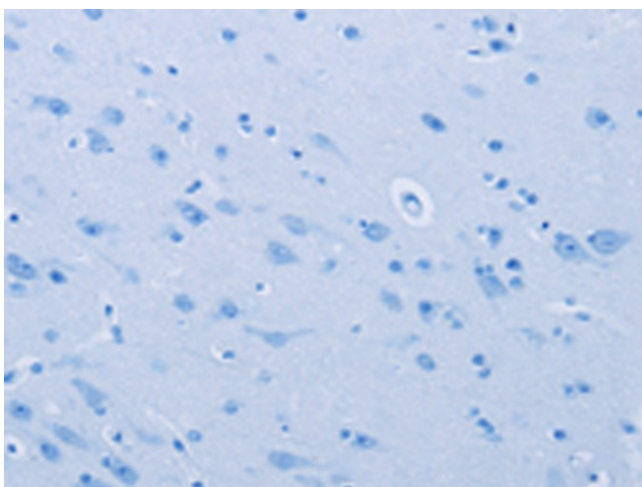
Immunohistochemistry of paraffin-embedded Human liver cancer tissue using TA366802 (TRPM1 Antibody) at dilution 1/20 (Original magnification: $\times 200$)



Immunohistochemistry of paraffin-embedded Human liver cancer tissue using TA366802 (TRPM1 Antibody) at dilution 1/20, treated with synthetic peptide. (Original magnification: $\times 200$)



Immunohistochemistry of paraffin-embedded Human brain tissue using TA366802 (TRPM1 Antibody) at dilution 1/20 (Original magnification: $\times 200$)



Immunohistochemistry of paraffin-embedded Human brain tissue using TA366802 (TRPM1 Antibody) at dilution 1/20, treated with synthetic peptide. (Original magnification: $\times 200$)