

Product datasheet for **TA366799**

FOXF2 Rabbit Polyclonal Antibody

Product data:

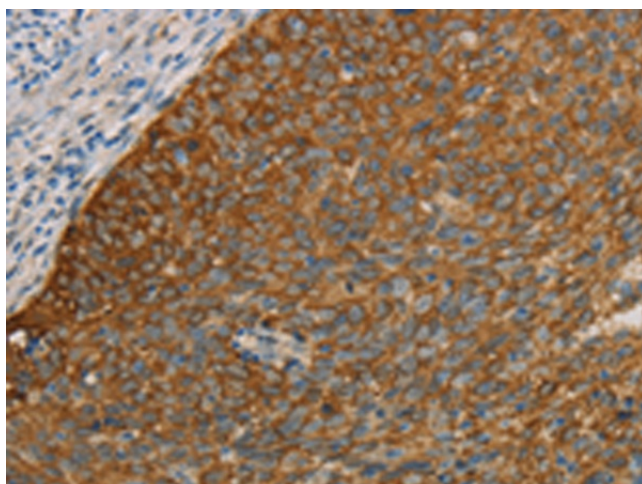
Product Type:	Primary Antibodies
Applications:	IHC, WB
Recommended Dilution:	WB: 500-2000 WB positive control: Human placenta and human normal liver tissue IHC: 50-200 Positive control: Human cervical cancer Predicted cell location: Cytoplasm
Reactivity:	Human, Mouse
Host:	Rabbit
Isotype:	IgG
Clonality:	Polyclonal
Immunogen:	Synthetic peptide of human FOXF2
Formulation:	pH7.4 PBS, 0.05% NaN ₃ , 40% Glycerol
Concentration:	lot specific
Purification:	Antigen affinity purification
Conjugation:	Unconjugated
Storage:	Store at -20°C.
Stability:	1 year
Predicted Protein Size:	46 kDa
Gene Name:	forkhead box F2
Database Link:	Entrez Gene 2295 Human Q12947
Background:	FOXF2 encodes forkhead box F2, one of many human homologues of the Drosophila melanogaster transcription factor forkhead. FOXF2 is expressed in lung and placenta, and has been shown to transcriptionally activate several lung-specific genes.
Synonyms:	FKHL6; FREAC-2; FREAC2



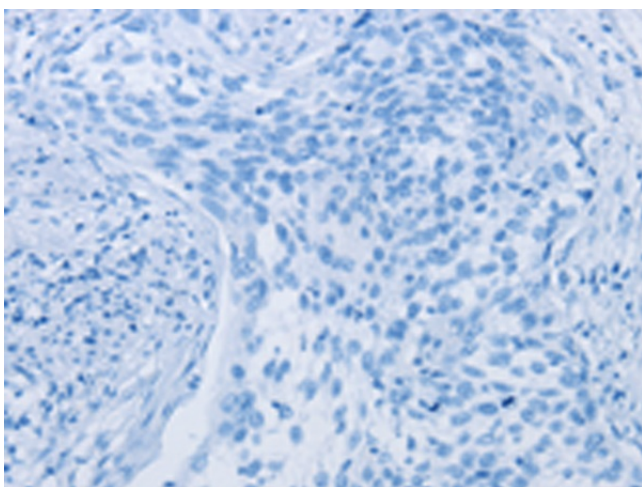
[View online »](#)

Product images:

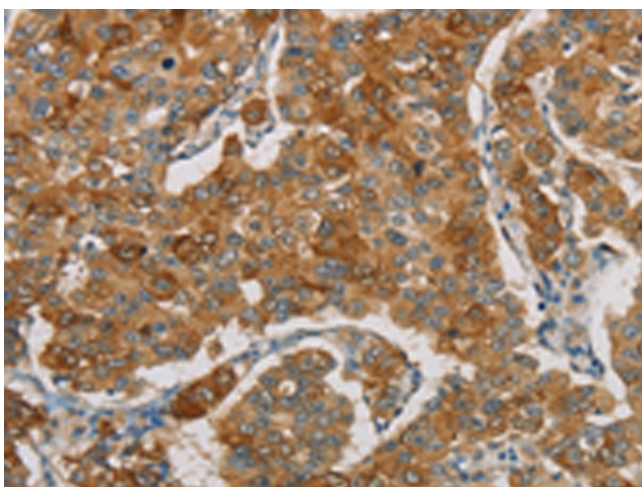
Gel: 8%SDS-PAGE
Lysate: 40 μ g
Lane 1-2: Human placenta tissue
human normal liver tissue
Primary antibody: TA366799 (FOXF2 Antibody) at
dilution 1/666
Secondary antibody: Goat anti rabbit IgG at
1/8000 dilution
Exposure time: 5 minutes



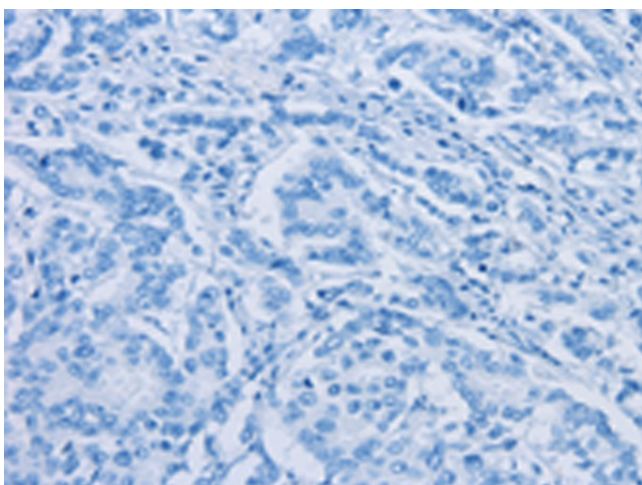
Immunohistochemistry of paraffin-embedded
Human cervical cancer tissue using TA366799
(FOXF2 Antibody) at dilution 1/30 (Original
magnification: \times 200)



Immunohistochemistry of paraffin-embedded Human cervical cancer tissue using TA366799 (FOXF2 Antibody) at dilution 1/30, treated with synthetic peptide. (Original magnification: $\times 200$)



Immunohistochemistry of paraffin-embedded Human breast cancer tissue using TA366799 (FOXF2 Antibody) at dilution 1/30 (Original magnification: $\times 200$)



Immunohistochemistry of paraffin-embedded Human breast cancer tissue using TA366799 (FOXF2 Antibody) at dilution 1/30, treated with synthetic peptide. (Original magnification: $\times 200$)