

## Product datasheet for **TA366779**

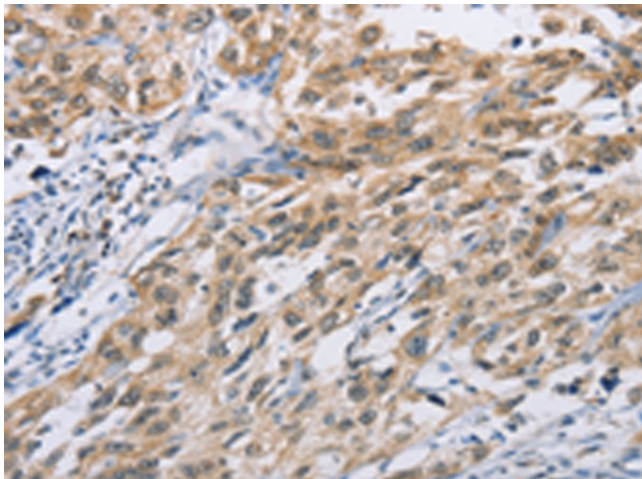
### ZIC5 Rabbit Polyclonal Antibody

#### Product data:

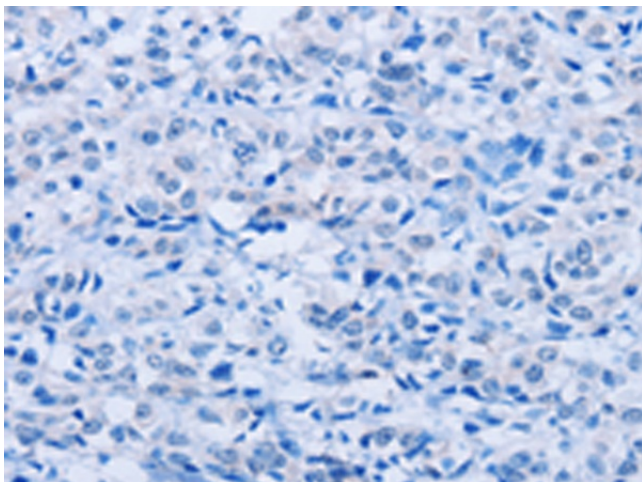
Product Type:	Primary Antibodies
Applications:	IHC
Recommended Dilution:	IHC: 100-300 Positive control: Human esophagus cancer Predicted cell location: Nucleus
Reactivity:	Human, Mouse
Host:	Rabbit
Isotype:	IgG
Clonality:	Polyclonal
Immunogen:	Synthetic peptide of human ZIC5
Formulation:	pH7.4 PBS, 0.05% NaN <sub>3</sub> , 40% Glycerol
Concentration:	lot specific
Purification:	Antigen affinity purification
Conjugation:	Unconjugated
Storage:	Store at -20°C.
Stability:	1 year
Gene Name:	Zic family member 5
Database Link:	<a href="#">Entrez Gene 85416 Human Q96T25</a>
Background:	This gene encodes a member of the ZIC family of C2H2-type zinc finger proteins. Members of this family are important during development, and have been associated X-linked visceral heterotaxy and holoprosencephaly type 5. This gene is closely linked to a gene encoding zinc finger protein of the cerebellum 2, a related family member on chromosome 13.
Synonyms:	ZIC5



[View online »](#)

**Product images:**

Immunohistochemistry of paraffin-embedded Human esophagus cancer tissue using TA366779 (ZIC5 Antibody) at dilution 1/100 (Original magnification:  $\times 200$ )



Immunohistochemistry of paraffin-embedded Human esophagus cancer tissue using TA366779 (ZIC5 Antibody) at dilution 1/100, treated with synthetic peptide. (Original magnification:  $\times 200$ )