

Product datasheet for **TA366775**

ZGPAT Rabbit Polyclonal Antibody

Product data:

Product Type:	Primary Antibodies
Applications:	IHC
Recommended Dilution:	IHC: 50-200 Positive control: Human gastric cancer Predicted cell location: Cytoplasm
Reactivity:	Human
Host:	Rabbit
Isotype:	IgG
Clonality:	Polyclonal
Immunogen:	Synthetic peptide of human ZGPAT
Formulation:	pH7.4 PBS, 0.05% NaN ₃ , 40% Glycerol
Concentration:	lot specific
Purification:	Antigen affinity purification
Conjugation:	Unconjugated
Storage:	Store at -20°C.
Stability:	1 year
Gene Name:	zinc finger CCCH-type and G-patch domain containing
Database Link:	Entrez Gene 84619 Human Q8N5A5

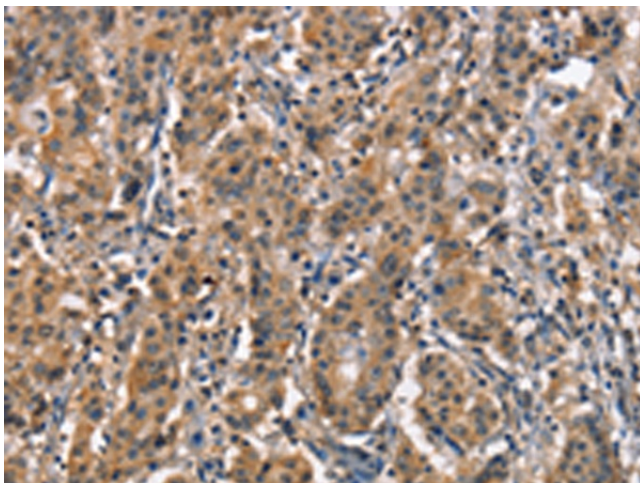
Background: ZGPAT (Zinc finger CCCH-type with G patch domain-containing protein), also known as zinc finger CCCH domain-containing protein 9 (ZC3HDC9) and G patch domain-containing protein 6 (GPATC6), is a 531 amino acid protein that contains a G-patch domain, which is typically found within RNA-binding proteins. Proteins that contain the G-patch domain include some tumor suppressor and DNA-damage repair proteins. ZGPAT also contains one C3H1-type zinc finger, which further supports its probable role as an RNA-binding protein. The gene encoding ZGPAT is inactivated via differential methylation in a oligodendroglioma cell line, suggesting that ZGPAT may have utility as a biomarker. There are two isoforms of ZGPAT that are produced as a result of alternative splicing events.



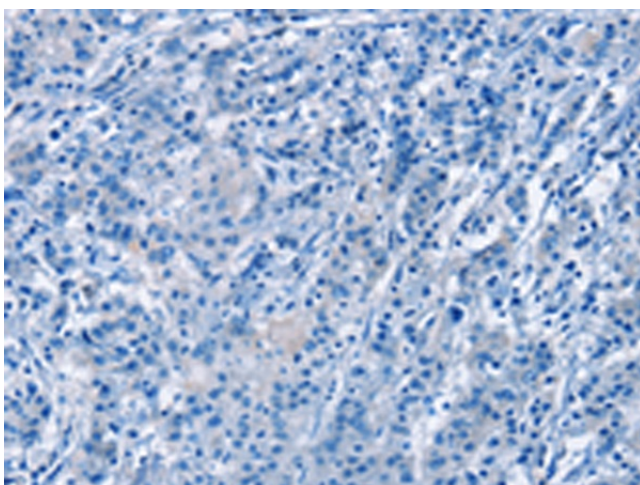
[View online »](#)

Synonyms: dj583P15.3; FLJ14972; GPATC6; GPATCH6; KIAA1847; MGC44880; ZC3H9; ZC3HDC9; ZIP

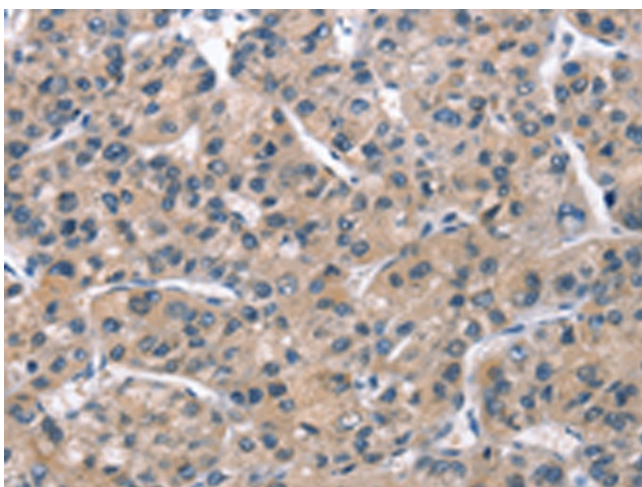
Product images:



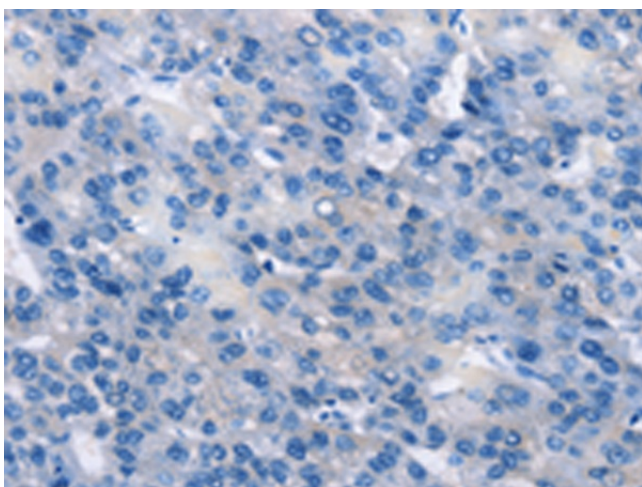
Immunohistochemistry of paraffin-embedded Human gastric cancer tissue using TA366775 (ZGPAT Antibody) at dilution 1/60 (Original magnification: $\times 200$)



Immunohistochemistry of paraffin-embedded Human gastric cancer tissue using TA366775 (ZGPAT Antibody) at dilution 1/60, treated with synthetic peptide. (Original magnification: $\times 200$)



Immunohistochemistry of paraffin-embedded Human liver cancer tissue using TA366775 (ZGPAT Antibody) at dilution 1/60 (Original magnification: $\times 200$)



Immunohistochemistry of paraffin-embedded Human liver cancer tissue using TA366775 (ZGPAT Antibody) at dilution 1/60, treated with synthetic peptide. (Original magnification: $\times 200$)