

## Product datasheet for **TA366773**

### ZFYVE19 Rabbit Polyclonal Antibody

#### Product data:

Product Type:	Primary Antibodies
Applications:	IHC, WB
Recommended Dilution:	WB: 500-2000 WB positive control: Hela and A431 cells IHC: 50-200 Positive control: Human thyroid cancer Predicted cell location: Cytoplasm
Reactivity:	Human
Host:	Rabbit
Isotype:	IgG
Clonality:	Polyclonal
Immunogen:	Synthetic peptide of human ZFYVE19
Formulation:	pH7.4 PBS, 0.05% NaN <sub>3</sub> , 40% Glycerol
Concentration:	lot specific
Purification:	Antigen affinity purification
Conjugation:	Unconjugated
Storage:	Store at -20°C.
Stability:	1 year
Predicted Protein Size:	52 kDa
Gene Name:	zinc finger FYVE-type containing 19
Database Link:	<a href="#">Entrez Gene 84936 Human</a> <a href="#">Q96K21</a>



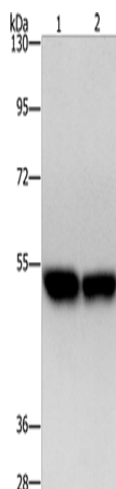
[View online »](#)

**Background:**

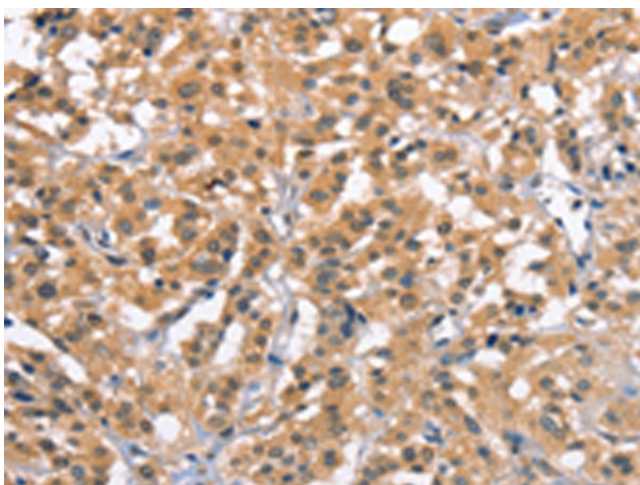
ZFYVE19 (zinc finger, FYVE domain containing 19), also known as MPFYVE (MLL partner containing FYVE domain), is a 471 amino acid protein that contains one FYVE-type zinc finger. Expressed in heart, brain, kidney, skeletal muscle and liver, ZFYVE19 may participate in transcriptional regulation events within the cell. Defects in the gene encoding ZFYVE19 are associated with acute myeloblastic leukemia (AML), a rapidly progressing cancer of the myeloid line of white blood cells that is characterized by fever, anemia, bone pain, shortness of breath and frequent infections. Three isoforms of ZFYVE19 exist due to alternative splicing events.

**Synonyms:**

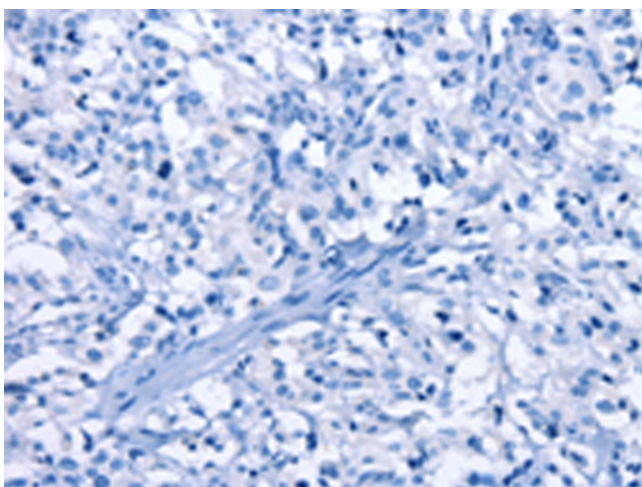
FLJ14840; MPFYVE

**Product images:**


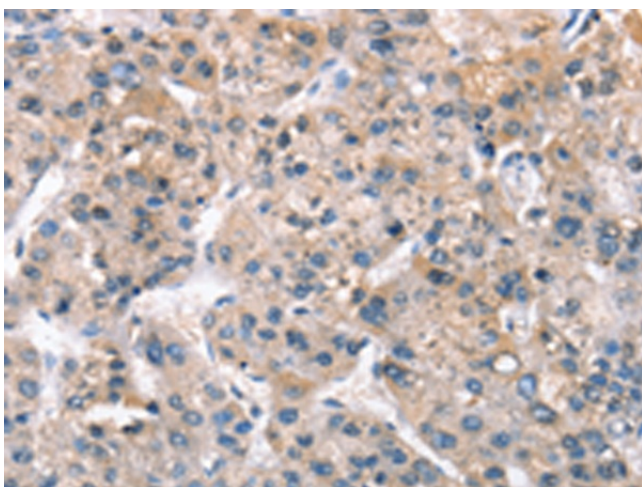
Gel: 8%SDS-PAGE  
Lysate: 40 µg  
Lane 1-2: HeLa cells  
A431 cells  
Primary antibody: TA366773 (ZFYVE19 Antibody)  
at dilution 1/500  
Secondary antibody: Goat anti rabbit IgG at  
1/8000 dilution  
Exposure time: 20 seconds



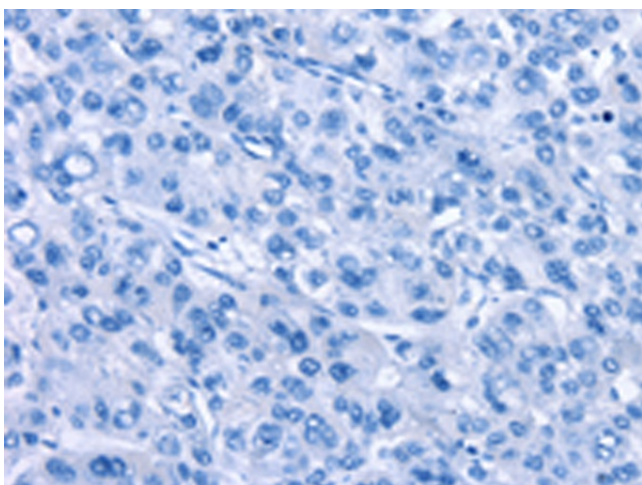
Immunohistochemistry of paraffin-embedded  
Human thyroid cancer tissue using TA366773  
(ZFYVE19 Antibody) at dilution 1/61 (Original  
magnification: ×200)



Immunohistochemistry of paraffin-embedded Human thyroid cancer tissue using TA366773 (ZFYVE19 Antibody) at dilution 1/61, treated with synthetic peptide. (Original magnification: ×200)



Immunohistochemistry of paraffin-embedded Human liver cancer tissue using TA366773 (ZFYVE19 Antibody) at dilution 1/61 (Original magnification: ×200)



Immunohistochemistry of paraffin-embedded Human liver cancer tissue using TA366773 (ZFYVE19 Antibody) at dilution 1/61, treated with synthetic peptide. (Original magnification: ×200)