

Product datasheet for **TA366768**

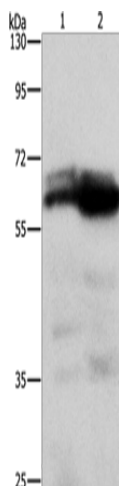
ZDHHC17 Rabbit Polyclonal Antibody

Product data:

Product Type:	Primary Antibodies
Applications:	WB
Recommended Dilution:	WB: 200-1000 WB positive control: Mouse brain and human fetal brain tissue
Reactivity:	Human, Mouse, Rat
Host:	Rabbit
Isotype:	IgG
Clonality:	Polyclonal
Immunogen:	Synthetic peptide of human ZDHHC17
Formulation:	pH7.4 PBS, 0.05% NaN ₃ , 40% Glycerol
Concentration:	lot specific
Purification:	Antigen affinity purification
Conjugation:	Unconjugated
Storage:	Store at -20°C.
Stability:	1 year
Predicted Protein Size:	73 kDa
Gene Name:	zinc finger DHHC-type containing 17
Database Link:	Entrez Gene 23390 Human Q8IUH5
Background:	Palmitoyltransferase ZDHHC17 is an enzyme that contains a DHHC domain that in humans is encoded by the ZDHHC17 gene. Palmitoyltransferase specific for a subset of neuronal proteins, including SNAP25, DLG4/PSD95, GAD2, SYT1 and HD. Palmitoylates MPP1 in erythrocytes. May be involved in the sorting or targeting of critical proteins involved in the initiating events of endocytosis at the plasma membrane. Has transforming activity. Mediates Mg ²⁺ transport.
Synonyms:	DHHC-17; HIP3; HIP14; HSPC294; HYPH; KIAA0946



[View online »](#)

Product images:

Gel: 8%SDS-PAGE

Lysate: 60 μ g

Lane 1-2: Mouse brain tissue
human fetal brain tissue

Primary antibody: TA366768 (ZDHHC17
Antibody) at dilution 1/500

Secondary antibody: Goat anti rabbit IgG at
1/8000 dilution

Exposure time: 5 seconds