

Product datasheet for **TA366765**

Pokemon (ZBTB7A) Rabbit Polyclonal Antibody

Product data:

Product Type:	Primary Antibodies
Applications:	WB
Recommended Dilution:	WB: 500-2000 WB positive control: Hepg2 and NIH/3T3 cells
Reactivity:	Human, Mouse, Rat
Host:	Rabbit
Isotype:	IgG
Clonality:	Polyclonal
Immunogen:	Synthetic peptide of human ZBTB7A
Formulation:	pH7.4 PBS, 0.05% NaN ₃ , 40% Glycerol
Concentration:	lot specific
Purification:	Antigen affinity purification
Conjugation:	Unconjugated
Storage:	Store at -20°C.
Stability:	1 year
Predicted Protein Size:	61 kDa
Gene Name:	zinc finger and BTB domain containing 7A
Database Link:	Entrez Gene 51341 Human O95365

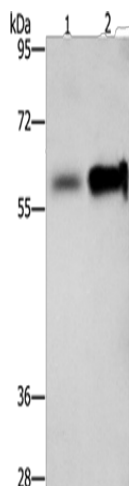
Background: LRF, formerly identified as Pokemon, is a poxvirus zinc finger (POZ) domain-containing transcription factor that influences cell differentiation. LRF (for leukemia/lymphoma related factor) is also known as zinc finger and BTB domain containing 7A, ZBTB7, TIP21, FBI1 and FBI-1. POZ-domain transcription factors contain a POZ or BTB type protein-protein interaction domain at their N-terminus and Kruppel-type zinc fingers at their C-terminus. LRF is inducible during both murine and human preadipocyte differentiation and may contribute to adipogenesis through influencing the switch from cellular proliferation to terminal differentiation.

Synonyms: DKFZp547O146; FBI-1; FBI1; LRF; MGC99631; pokemon; TIP21; ZBTB7; ZNF857A



[View online »](#)

Product images:



Gel: 8%SDS-PAGE
Lysate: 40 μ g
Lane 1-2: Hepg2 cells
NIH/3T3 cells
Primary antibody: TA366765 (ZBTB7A Antibody)
at dilution 1/500
Secondary antibody: Goat anti rabbit IgG at
1/8000 dilution
Exposure time: 1 minute