

## Product datasheet for **TA366763**

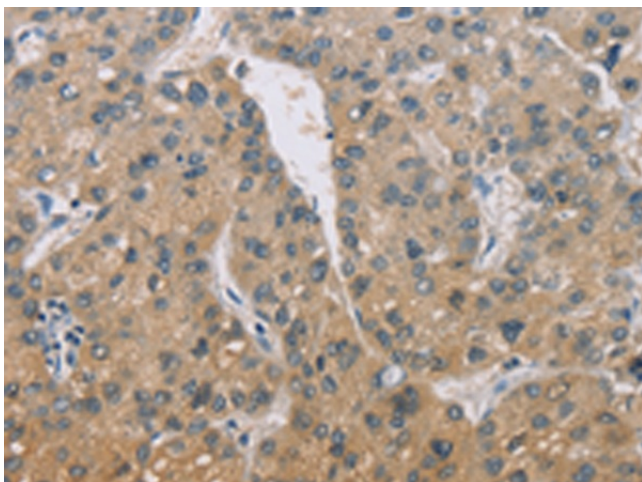
### ZBTB6 Rabbit Polyclonal Antibody

#### Product data:

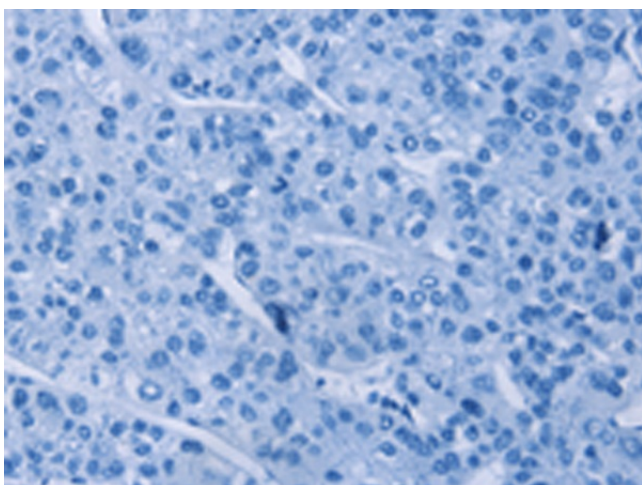
Product Type:	Primary Antibodies
Applications:	IHC
Recommended Dilution:	IHC: 50-200 Positive control: Human liver cancer Predicted cell location: Cytoplasm
Reactivity:	Human, Mouse
Host:	Rabbit
Isotype:	IgG
Clonality:	Polyclonal
Immunogen:	Synthetic peptide of human ZBTB6
Formulation:	pH7.4 PBS, 0.05% NaN <sub>3</sub> , 40% Glycerol
Concentration:	lot specific
Purification:	Antigen affinity purification
Conjugation:	Unconjugated
Storage:	Store at -20°C.
Stability:	1 year
Gene Name:	zinc finger and BTB domain containing 6
Database Link:	<a href="#">Entrez Gene 10773 Human Q15916</a>
Background:	The ZBTB6 protein contains a conserved N-terminal domain known as the POZ domain that inhibits DNA binding. Sequence analysis predicted that the 424-amino acid protein contains 4 C-terminal zinc finger motifs and an N-terminal domain of 120 amino acids found in many different zinc finger proteins and a group of non-zinc finger poxvirus proteins.
Synonyms:	ZID; ZNF482



[View online »](#)

**Product images:**

Immunohistochemistry of paraffin-embedded Human liver cancer tissue using TA366763 (ZBTB6 Antibody) at dilution 1/50 (Original magnification:  $\times 200$ )



Immunohistochemistry of paraffin-embedded Human liver cancer tissue using TA366763 (ZBTB6 Antibody) at dilution 1/50, treated with synthetic peptide. (Original magnification:  $\times 200$ )