

## Product datasheet for **TA366760**

### **ZBTB3 Rabbit Polyclonal Antibody**

#### **Product data:**

Product Type:	Primary Antibodies
Applications:	IHC, WB
Recommended Dilution:	WB: 200-1000 WB positive control: HepG2 cells IHC: 50-200 Positive control: Human liver cancer Predicted cell location: Cytoplasm
Reactivity:	Human, Mouse
Host:	Rabbit
Isotype:	IgG
Clonality:	Polyclonal
Immunogen:	Synthetic peptide of human ZBTB3
Formulation:	pH7.4 PBS, 0.05% NaN <sub>3</sub> , 40% Glycerol
Concentration:	lot specific
Purification:	Antigen affinity purification
Conjugation:	Unconjugated
Storage:	Store at -20°C.
Stability:	1 year
Predicted Protein Size:	62 kDa
Gene Name:	zinc finger and BTB domain containing 3
Database Link:	<a href="#">Entrez Gene 79842 Human</a> <a href="#">Q9H5J0</a>



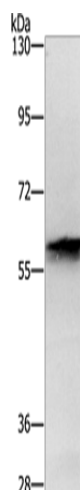
[View online »](#)

**Background:**

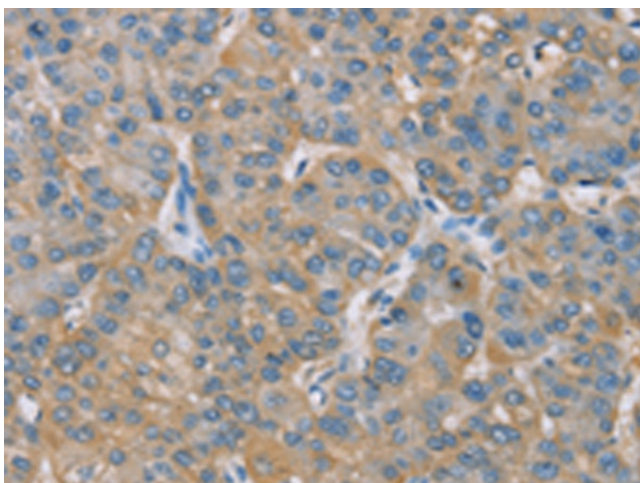
The BTB (Broad-Complex, Tramtrack and Bric a brac) domain, also known as the POZ (POxvirus and Zinc finger) domain, is an N-terminal homodimerization domain that contains multiple copies of kelch repeats and/or C2H2-type zinc fingers. Proteins that contain BTB domains are thought to be involved in transcriptional regulation via control of chromatin structure and function. ZBTB3 (zinc finger and BTB domain containing 3) is a 574 amino acid protein that contains one BTB (POZ) domain and two C2H2-type zinc fingers. Localized to the nucleus, ZBTB3 is thought to play a role in transcriptional regulation events. The gene encoding ZBTB3 maps to human chromosome 11, which houses over 1,400 genes and comprises nearly 4% of the human genome.

**Synonyms:**

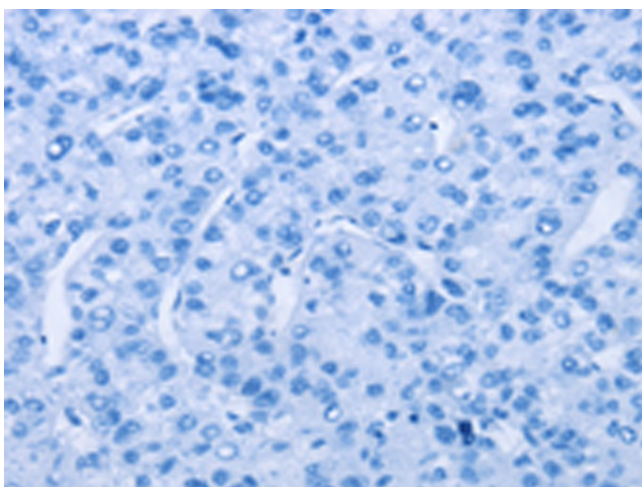
FLJ23392

**Product images:**


Gel: 8%SDS-PAGE  
Lysate: 40 µg  
Lane: HepG2 cells  
Primary antibody: TA366760 (ZBTB3 Antibody) at dilution 1/500  
Secondary antibody: Goat anti rabbit IgG at 1/8000 dilution  
Exposure time: 10 seconds



Immunohistochemistry of paraffin-embedded Human liver cancer tissue using TA366760 (ZBTB3 Antibody) at dilution 1/50 (Original magnification: ×200)



Immunohistochemistry of paraffin-embedded Human liver cancer tissue using TA366760 (ZBTB3 Antibody) at dilution 1/50, treated with synthetic peptide. (Original magnification: ×200)