

## Product datasheet for **TA366755S**

### **ZBTB1 Rabbit Polyclonal Antibody**

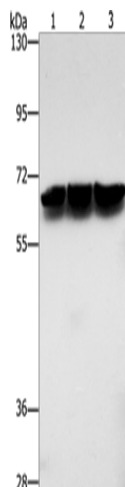
#### **Product data:**

|                         |  |
|-------------------------|--|
| Product Type:           | Primary Antibodies   |
| Applications:           | IHC, WB  |
| Recommended Dilution:   | WB: 1000-5000<br>WB positive control: Jurkat and hela cells, mouse brain tissue<br>IHC: 25-100<br>Positive control: Human prostate cancer<br>Predicted cell location: Cytoplasm  |
| Reactivity:             | Human, Mouse   |
| Host:                   | Rabbit   |
| Isotype:                | IgG  |
| Clonality:              | Polyclonal   |
| Immunogen:              | Synthetic peptide of human ZBTB1   |
| Formulation:            | pH7.4 PBS, 0.05% NaN <sub>3</sub> , 40% Glycerol   |
| Purification:           | Antigen affinity purification  |
| Conjugation:            | Unconjugated   |
| Storage:                | Store at -20°C.  |
| Stability:              | 1 year   |
| Predicted Protein Size: | 82 kDa   |
| Gene Name:              | zinc finger and BTB domain containing 1  |
| Database Link:          | <a href="#">Entrez Gene 22890 Human Q9Y2K1</a>   |
| Background:             | The BTB (Broad-Complex, Tramtrack and Bric a brac) domain, also known as the POZ (Poxvirus and Zinc finger) domain, is an N-terminal homodimerization domain that contains multiple copies of kelch repeats and/or C2H2-type zinc fingers. Proteins that contain BTB domains are thought to be involved in transcriptional regulation via control of chromatin structure and function. ZBTB1 (zinc finger and BTB domain containing 1), also known as KIAA0997, is a 713 amino acid nuclear protein that contains one BTB (POZ) domain and 8 C2H2-type zinc fingers. |

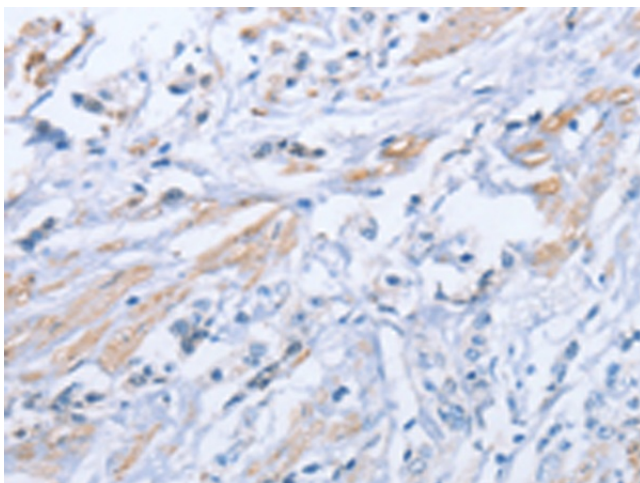
[View online »](#)

Synonyms: KIAA0997

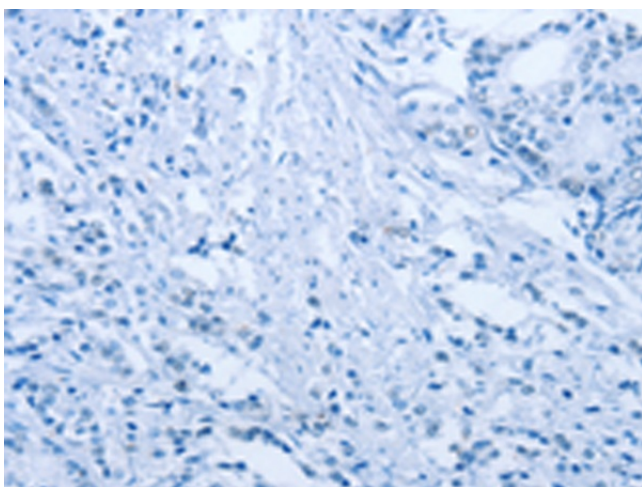
## Product images:



Gel: 8%SDS-PAGE  
Lysate: 40 µg  
Lane 1-3: Jurkat cells  
hela cells  
mouse brain tissue  
Primary antibody: [TA366755] (ZBTB1 Antibody)  
at dilution 1/500  
Secondary antibody: Goat anti rabbit IgG at  
1/8000 dilution  
Exposure time: 5 seconds



Immunohistochemistry of paraffin-embedded  
Human prostate cancer tissue using [TA366755]  
(ZBTB1 Antibody) at dilution 1/50 (Original  
magnification: ×200)



Immunohistochemistry of paraffin-embedded Human prostate cancer tissue using [TA366755] (ZBTB1 Antibody) at dilution 1/50, treated with synthetic peptide. (Original magnification: ×200)