

## Product datasheet for **TA366750**

### ZAP70 Rabbit Polyclonal Antibody

#### Product data:

Product Type:	Primary Antibodies
Applications:	IHC, WB
Recommended Dilution:	WB: 500-2000 WB positive control: Jurkat cells and mouse thymus tissue IHC: 25-100 Positive control: Human liver cancer Predicted cell location: Cytoplasm
Reactivity:	Human, Mouse
Host:	Rabbit
Isotype:	IgG
Clonality:	Polyclonal
Immunogen:	Synthetic peptide of human ZAP70
Formulation:	pH7.4 PBS, 0.05% NaN <sub>3</sub> , 40% Glycerol
Concentration:	lot specific
Purification:	Antigen affinity purification
Conjugation:	Unconjugated
Storage:	Store at -20°C.
Stability:	1 year
Predicted Protein Size:	70 kDa
Gene Name:	zeta chain of T cell receptor associated protein kinase 70kDa
Database Link:	<a href="#">Entrez Gene 7535 Human P43403</a>



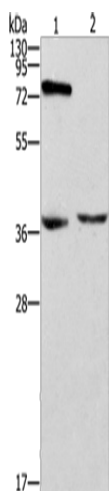
[View online »](#)

**Background:**

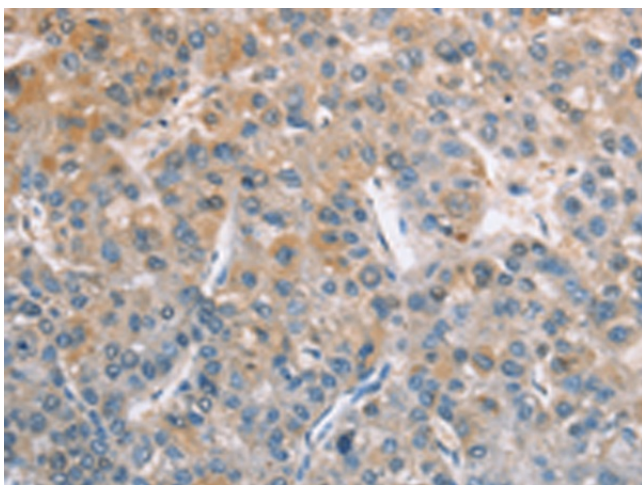
This gene encodes an enzyme belonging to the protein tyrosine kinase family, and it plays a role in T-cell development and lymphocyte activation. This enzyme, which is phosphorylated on tyrosine residues upon T-cell antigen receptor (TCR) stimulation, functions in the initial step of TCR-mediated signal transduction in combination with the Src family kinases, Lck and Fyn. This enzyme is also essential for thymocyte development. Mutations in this gene cause selective T-cell defect, a severe combined immunodeficiency disease characterized by a selective absence of CD8-positive T-cells. Two transcript variants that encode different isoforms have been found for this gene.

**Synonyms:**

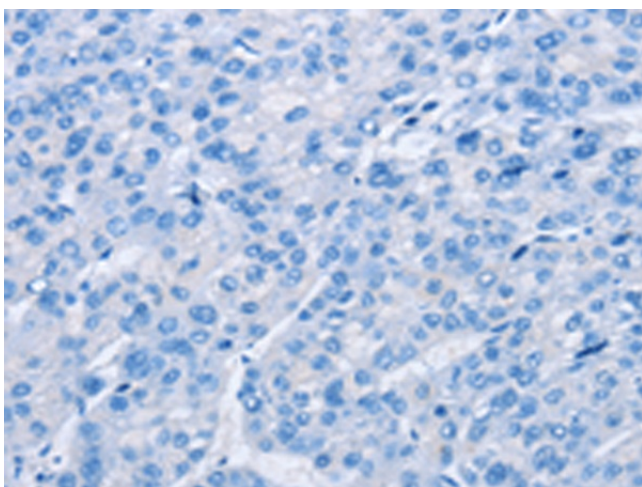
FLJ17670; FLJ17679; SRK; STD; TZK; ZAP-70

**Product images:**

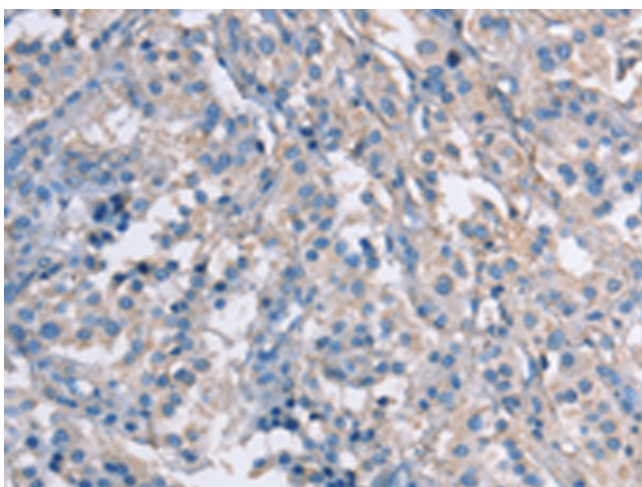
Gel: 10%SDS-PAGE  
Lysate: 40 µg  
Lane 1-2: Jurkat cells  
mouse thymus tissue  
Primary antibody: TA366750 (ZAP70 Antibody) at  
dilution 1/1000  
Secondary antibody: Goat anti rabbit IgG at  
1/8000 dilution  
Exposure time: 40 seconds



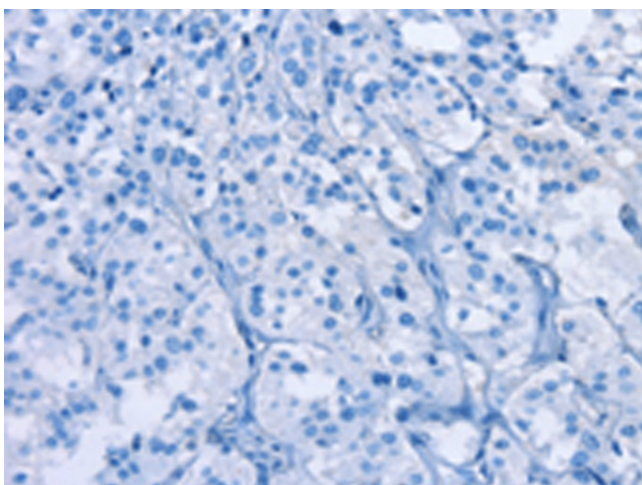
Immunohistochemistry of paraffin-embedded  
Human liver cancer tissue using TA366750  
(ZAP70 Antibody) at dilution 1/50 (Original  
magnification: ×200)



Immunohistochemistry of paraffin-embedded Human liver cancer tissue using TA366750 (ZAP70 Antibody) at dilution 1/50, treated with synthetic peptide. (Original magnification:  $\times 200$ )



Immunohistochemistry of paraffin-embedded Human thyroid cancer tissue using TA366750 (ZAP70 Antibody) at dilution 1/50 (Original magnification:  $\times 200$ )



Immunohistochemistry of paraffin-embedded Human thyroid cancer tissue using TA366750 (ZAP70 Antibody) at dilution 1/50, treated with synthetic peptide. (Original magnification:  $\times 200$ )