

Product datasheet for **TA366737S**

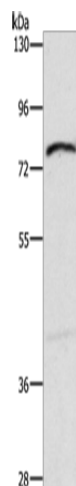
XPNPEP1 Rabbit Polyclonal Antibody

Product data:

Product Type:	Primary Antibodies
Applications:	WB
Recommended Dilution:	WB: 500-2000 WB positive control: Mouse intestinum tenue tissue
Reactivity:	Human, Mouse
Host:	Rabbit
Isotype:	IgG
Clonality:	Polyclonal
Immunogen:	Synthetic peptide of human XPNPEP1
Formulation:	pH7.4 PBS, 0.05% NaN ₃ , 40% Glycerol
Purification:	Antigen affinity purification
Conjugation:	Unconjugated
Storage:	Store at -20°C.
Stability:	1 year
Predicted Protein Size:	70 kDa
Gene Name:	X-prolyl aminopeptidase (aminopeptidase P) 1, soluble
Database Link:	Entrez Gene 7511 Human Q9NQW7
Background:	This gene encodes the cytosolic form of a metalloaminopeptidase that catalyzes the cleavage of the N-terminal amino acid adjacent to a proline residue. The gene product may play a role in degradation and maturation of tachykinins, neuropeptides, and peptide hormones. Alternative splicing results in multiple transcript variants.
Synonyms:	SAMP; XPNPEP; XPNPEPL; XPNPEPL1



[View online »](#)

Product images:

Gel: 10%SDS-PAGE
Lysate: 40 µg
Lane: Mouse intestinum tenue tissue
Primary antibody: [TA366737] (XPNPEP1
Antibody) at dilution 1/600
Secondary antibody: Goat anti rabbit IgG at
1/8000 dilution
Exposure time: 10 seconds