

Product datasheet for **TA366737**

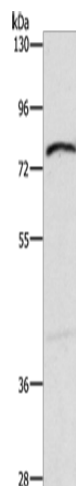
XPNPEP1 Rabbit Polyclonal Antibody

Product data:

| | |
|-------------------------|---|
| Product Type: | Primary Antibodies |
| Applications: | WB |
| Recommended Dilution: | WB: 500-2000 WB positive control: Mouse intestinum tenue tissue |
| Reactivity: | Human, Mouse |
| Host: | Rabbit |
| Isotype: | IgG |
| Clonality: | Polyclonal |
| Immunogen: | Synthetic peptide of human XPNPEP1 |
| Formulation: | pH7.4 PBS, 0.05% NaN ₃ , 40% Glycerol |
| Concentration: | lot specific |
| Purification: | Antigen affinity purification |
| Conjugation: | Unconjugated |
| Storage: | Store at -20°C. |
| Stability: | 1 year |
| Predicted Protein Size: | 70 kDa |
| Gene Name: | X-prolyl aminopeptidase (aminopeptidase P) 1, soluble |
| Database Link: | Entrez Gene 7511 Human Q9NQW7 |
| Background: | This gene encodes the cytosolic form of a metalloaminopeptidase that catalyzes the cleavage of the N-terminal amino acid adjacent to a proline residue. The gene product may play a role in degradation and maturation of tachykinins, neuropeptides, and peptide hormones. Alternative splicing results in multiple transcript variants. |
| Synonyms: | SAMP; XPNPEP; XPNPEPL; XPNPEPL1 |



[View online »](#)

Product images:

Gel: 10%SDS-PAGE
Lysate: 40 μ g
Lane: Mouse intestinum tenue tissue
Primary antibody: TA366737 (XPNPEP1 Antibody)
at dilution 1/600
Secondary antibody: Goat anti rabbit IgG at
1/8000 dilution
Exposure time: 10 seconds