

Product datasheet for **TA366736**

ZNF624 Rabbit Polyclonal Antibody

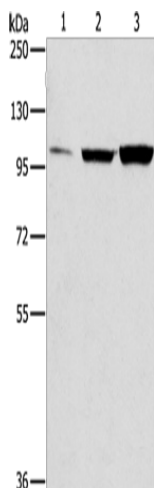
Product data:

Product Type:	Primary Antibodies
Applications:	WB
Recommended Dilution:	WB: 200-1000 WB positive control: Raji, PC3 and A549 cells
Reactivity:	Human
Host:	Rabbit
Isotype:	IgG
Clonality:	Polyclonal
Immunogen:	Synthetic peptide of human ZNF624
Formulation:	pH7.4 PBS, 0.05% NaN ₃ , 40% Glycerol
Concentration:	lot specific
Purification:	Antigen affinity purification
Conjugation:	Unconjugated
Storage:	Store at -20°C.
Stability:	1 year
Predicted Protein Size:	100 kDa
Gene Name:	zinc finger protein 624
Database Link:	Entrez Gene 57547 Human Q9P2J8

Background: Zinc-finger proteins contain DNA-binding domains and have a wide variety of functions, most of which encompass some form of transcriptional activation or repression. The majority of zinc-finger proteins contain a Krüppel-type DNA binding domain and a KRAB domain, which is thought to interact with KAP1, thereby recruiting histone modifying proteins. Zinc finger protein 624 (ZNF624) is a 739 amino acid member of the Krüppel C2H2-type zinc-finger protein family. Localized to the nucleus, ZNF624 contains 21 C2H2-type zinc fingers through which it is thought to be involved in DNA-binding and transcriptional regulation.

Synonyms: KIAA1349; MGC119602; MGC119603; MGC119605

[View online »](#)

Product images:


Gel: 8%SDS-PAGE
 Lysate: 60 µg
 Lane 1-3: Raji cells
 PC3 cells
 A549 cells
 Primary antibody: TA366736 (ZNF624 Antibody)
 at dilution 1/275
 Secondary antibody: Goat anti rabbit IgG at
 1/8000 dilution
 Exposure time: 10 seconds