

Product datasheet for **TA366735**

PI 3 Kinase p85 alpha (PIK3R1) Rabbit Polyclonal Antibody

Product data:

Product Type:	Primary Antibodies
Applications:	IHC, WB
Recommended Dilution:	WB: 500-2000 WB positive control: K562, Jurkat, HepG2 and Hela cell lysates treated with phosphatase inhibitors IHC: 10-50 Positive control: Human esophagus cancer Predicted cell location: Cytoplasm
Reactivity:	Human, Mouse, Rat
Host:	Rabbit
Isotype:	IgG
Clonality:	Polyclonal
Immunogen:	Peptide sequence around phosphorylation site of Tyrosine 607 derived from Human PIK3R1
Formulation:	pH7.4 PBS, 0.05% NaN ₃ , 40% Glycerol
Concentration:	lot specific
Purification:	Antigen affinity purification
Conjugation:	Unconjugated
Storage:	Store at -20°C.
Stability:	1 year
Predicted Protein Size:	84 kDa
Gene Name:	phosphoinositide-3-kinase regulatory subunit 1
Database Link:	Entrez Gene 5295 Human P27986



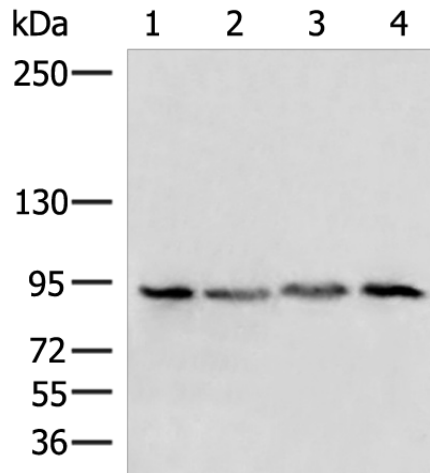
[View online »](#)

Background:

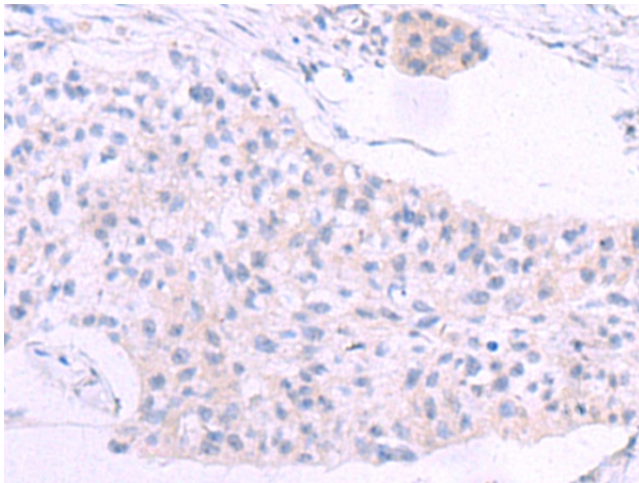
Phosphatidylinositol 3-kinase phosphorylates the inositol ring of phosphatidylinositol at the 3-prime position. The enzyme comprises a 110 kD catalytic subunit and a regulatory subunit of either 85, 55, or 50 kD. This gene encodes the 85 kD regulatory subunit. Phosphatidylinositol 3-kinase plays an important role in the metabolic actions of insulin, and a mutation in this gene has been associated with insulin resistance. Alternative splicing of this gene results in four transcript variants encoding different isoforms.

Synonyms:

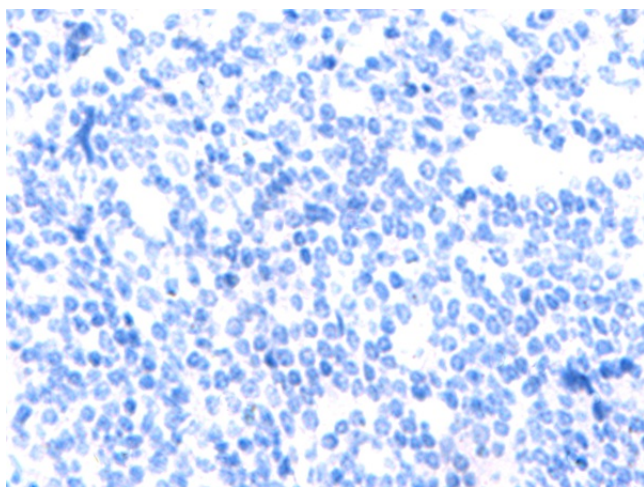
GRB1; p85; p85-ALPHA; PI3K

Product images:


Gel: 6%SDS-PAGE
 Lysate: 40 µg
 Lane 1-4: K562
 Jurkat
 HepG2 and Hela cell lysates treated with phosphatase inhibitors
 Primary antibody: TA366735 (PIK3R1(Phospho-Tyr607) Antibody) at dilution 1/500
 Secondary antibody: Goat anti rabbit IgG at 1/8000 dilution
 Exposure time: 2 minutes



Immunohistochemistry of paraffin-embedded Human esophagus cancer tissue using TA366735 (PIK3R1(Phospho-Tyr607) Antibody) at dilution 1/20 (Original magnification: ×200)



Immunohistochemistry of paraffin-embedded Human esophagus cancer tissue using TA366735 (PIK3R1(Phospho-Tyr607) Antibody) at dilution 1/20, treated with synthetic peptide. (Original magnification: $\times 200$)