

Product datasheet for **TA366734S**

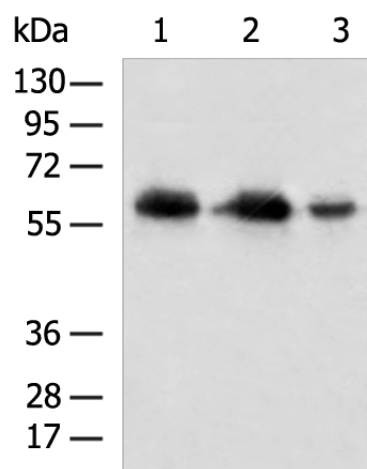
CRMP5 (DPYSL5) Rabbit Polyclonal Antibody

Product data:

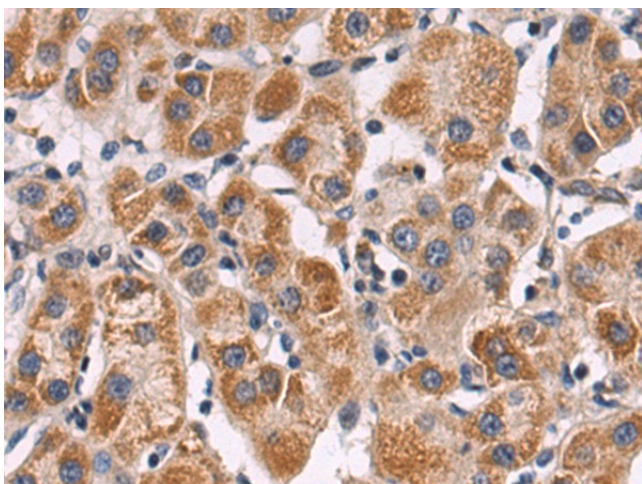
Product Type:	Primary Antibodies
Applications:	IHC, WB
Recommended Dilution:	WB: 500-2000 WB positive control: Human cerebella tissue, Mouse brain tissue, 293T cell lysates IHC: 50-200 Positive control: Human liver cancer Predicted cell location: Cytoplasm
Reactivity:	Human, Mouse, Rat
Host:	Rabbit
Isotype:	IgG
Clonality:	Polyclonal
Immunogen:	Fusion protein of human DPYSL5
Formulation:	pH7.4 PBS, 0.05% NaN ₃ , 40% Glycerol
Purification:	Antigen affinity purification
Conjugation:	Unconjugated
Storage:	Store at -20°C.
Stability:	1 year
Predicted Protein Size:	61 kDa
Gene Name:	dihydropyrimidinase like 5
Database Link:	Entrez Gene 56896 Human Q9BPU6
Background:	This gene encodes a member of the CRMP (collapsing response mediator protein) family thought to be involved in neural development. Antibodies to the encoded protein were found in some patients with neurologic symptoms who had paraneoplastic syndrome. A pseudogene of this gene is found on chromosome 11. Multiple alternatively spliced variants, encoding the same protein, have been identified.
Synonyms:	CRAM; CRMP-5; CRMP5; DRP-5; FLJ45383; OTTHUMP00000200913; Ulip6



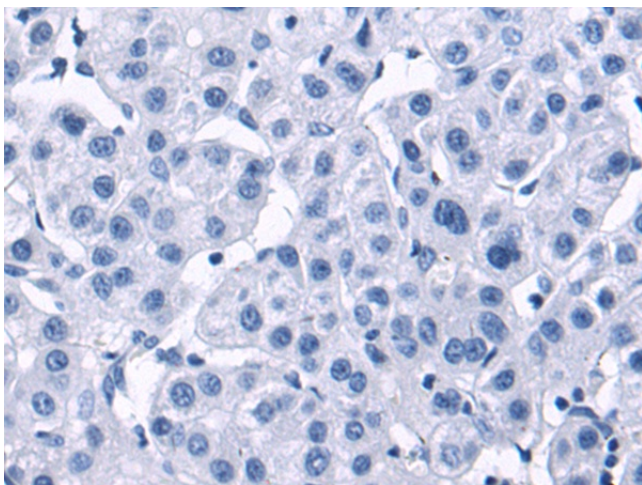
[View online »](#)

Product images:


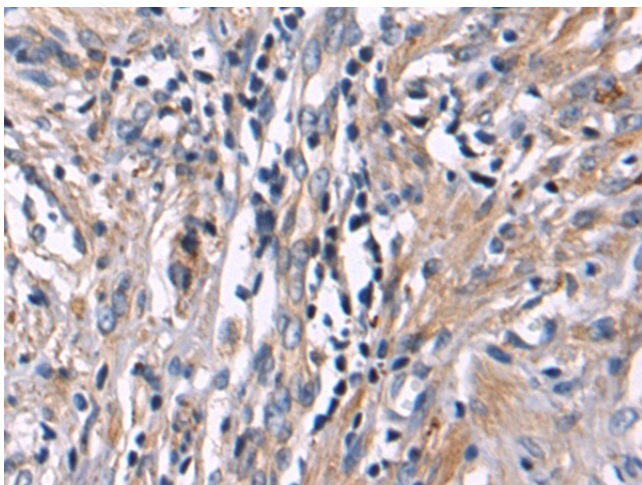
Gel: 8%SDS-PAGE
 Lysate: 40 µg
 Lane 1-3: Human cerebella tissue
 Mouse brain tissue
 293T cell lysates
 Primary antibody: [TA366734] (DPYSL5 Antibody)
 at dilution 1/600
 Secondary antibody: Goat anti rabbit IgG at
 1/5000 dilution
 Exposure time: 5 seconds



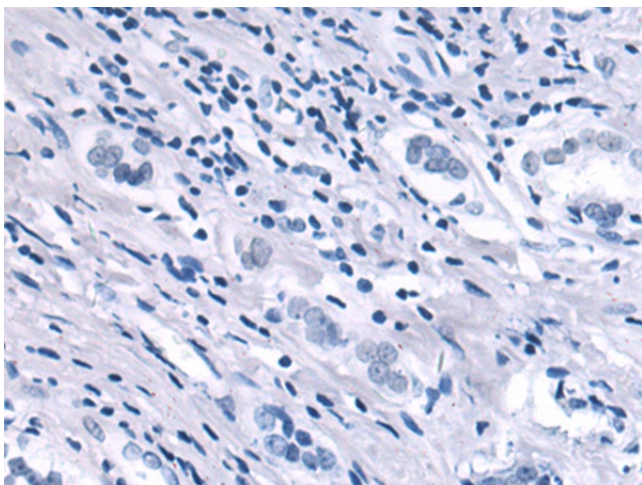
Immunohistochemistry of paraffin-embedded
 Human liver cancer tissue using [TA366734]
 (DPYSL5 Antibody) at dilution 1/50 (Original
 magnification: ×200)



Immunohistochemistry of paraffin-embedded Human liver cancer tissue using [TA366734] (DPYSL5 Antibody) at dilution 1/50, treated with fusion protein. (Original magnification: ×200)



Immunohistochemistry of paraffin-embedded Human prostate cancer tissue using [TA366734] (DPYSL5 Antibody) at dilution 1/50 (Original magnification: ×200)



Immunohistochemistry of paraffin-embedded Human prostate cancer tissue using [TA366734] (DPYSL5 Antibody) at dilution 1/50, treated with fusion protein. (Original magnification: ×200)