

## Product datasheet for **TA366731**

### SH3GLB2 Rabbit Polyclonal Antibody

#### Product data:

Product Type:	Primary Antibodies
Applications:	IHC
Recommended Dilution:	IHC: 50-100 Positive control: Human thyroid cancer Predicted cell location: Cytoplasm
Reactivity:	Human, Mouse, Rat
Host:	Rabbit
Isotype:	IgG
Clonality:	Polyclonal
Immunogen:	Fusion protein of human SH3GLB2
Formulation:	pH7.4 PBS, 0.05% NaN <sub>3</sub> , 40% Glycerol
Concentration:	lot specific
Purification:	Antigen affinity purification
Conjugation:	Unconjugated
Storage:	Store at -20°C.
Stability:	1 year
Gene Name:	SH3 domain containing GRB2 like endophilin B2
Database Link:	<a href="#">Entrez Gene 56904 Human Q9NR46</a>

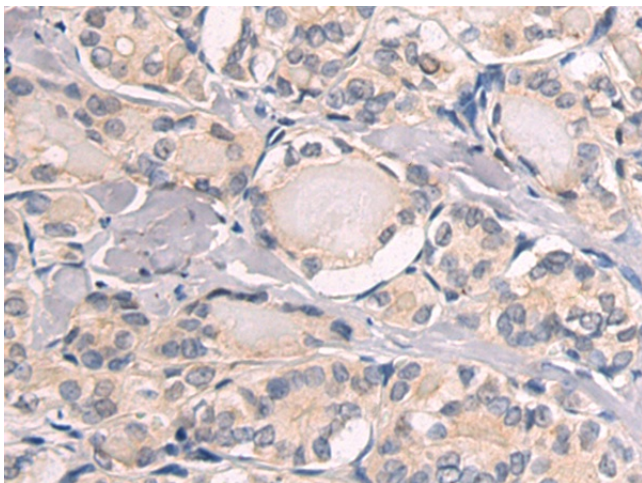
**Background:** The Endophilins comprise a family of proteins that associate with Amphiphysin, Synaptojanin and Dynamin and are implicated in presynaptic vesicle trafficking at nerve terminals. The expression patterns of the Endophilins are consistent with their cellular functions at the neuronal synapse. Endophilin B1 is a member of the B subgroup of the Endophilin family that is required for maintenance of mitochondrial morphology and for the regulation of the outer mitochondrial membrane dynamics. Endophilin B2 is also a member of the Endophilin B subgroup that is ubiquitously expressed but shows highest levels in brain, adult lung, ovary, and spinal cord. Decreased levels of Endophilin B2 are found in Down Syndrome and may reflect brain dysgenesis.



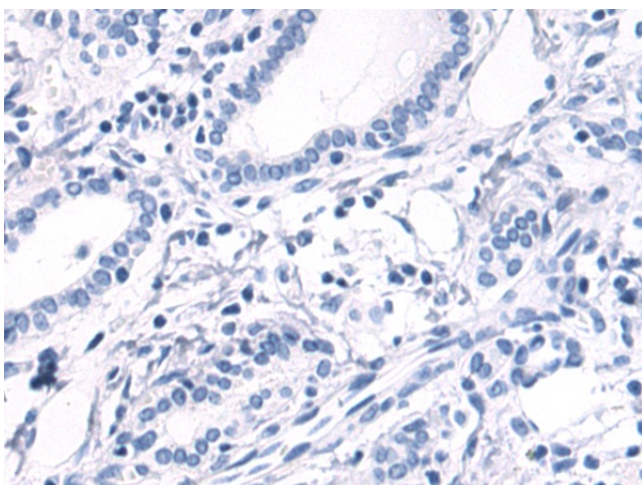
[View online »](#)

Synonyms: KIAA1848; OTTHUMP00000022320; PP6569; PP9455

### Product images:



Immunohistochemistry of paraffin-embedded Human thyroid cancer tissue using TA366731 (SH3GLB2 Antibody) at dilution 1/50 (Original magnification:  $\times 200$ )



Immunohistochemistry of paraffin-embedded Human thyroid cancer tissue using TA366731 (SH3GLB2 Antibody) at dilution 1/50, treated with fusion protein. (Original magnification:  $\times 200$ )