

## Product datasheet for **TA366728**

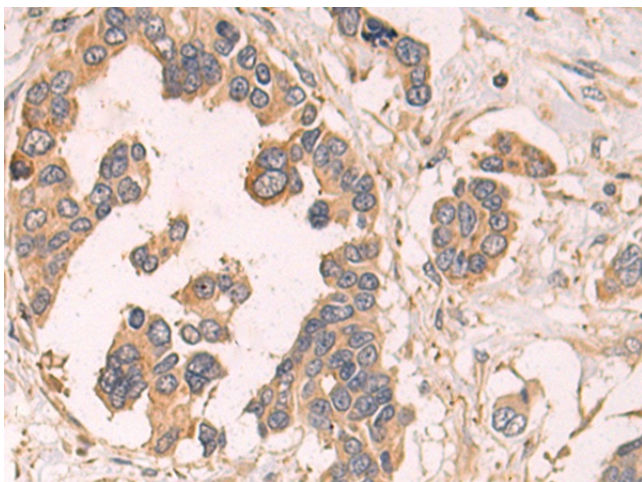
### C5orf25 (SIMC1) Rabbit Polyclonal Antibody

#### Product data:

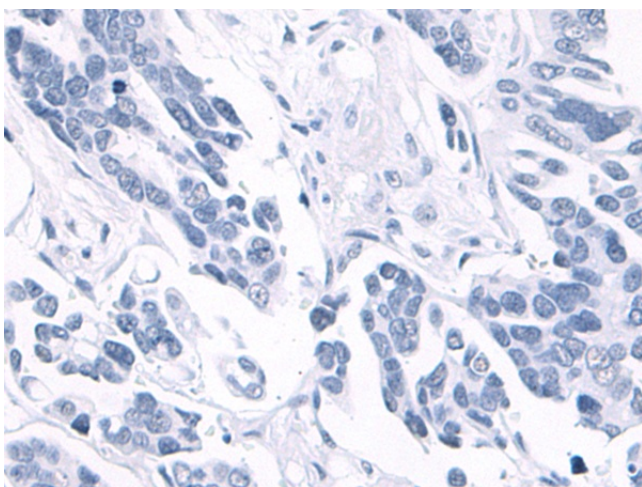
Product Type:	Primary Antibodies
Applications:	IHC
Recommended Dilution:	IHC: 50-200 Positive control: Human colorectal cancer Predicted cell location: Cytoplasm
Reactivity:	Human
Host:	Rabbit
Isotype:	IgG
Clonality:	Polyclonal
Immunogen:	Fusion protein of human SIMC1
Formulation:	pH7.4 PBS, 0.05% NaN <sub>3</sub> , 40% Glycerol
Concentration:	lot specific
Purification:	Antigen affinity purification
Conjugation:	Unconjugated
Storage:	Store at -20°C.
Stability:	1 year
Gene Name:	SUMO interacting motifs containing 1
Database Link:	<a href="#">Entrez Gene 375484 Human Q8NDZ2</a>
Background:	SIMC1 (SUMO Interacting Motifs Containing 1) is a Protein Coding gene. Gene Ontology (GO) annotations related to this gene include SUMO polymer binding. An important paralog of this gene is SKIDA1.
Synonyms:	4732471D19Rik



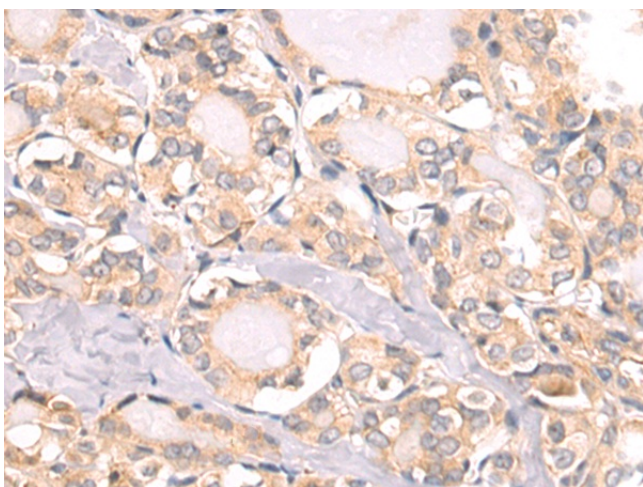
[View online »](#)

**Product images:**

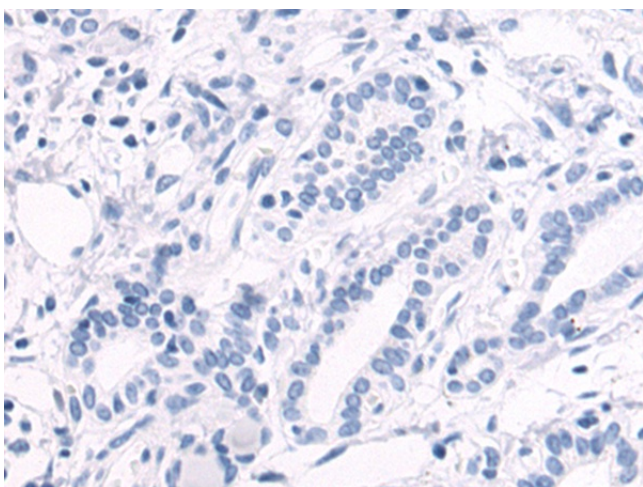
Immunohistochemistry of paraffin-embedded Human colorectal cancer tissue using TA366728 (SIMC1 Antibody) at dilution 1/80 (Original magnification:  $\times 200$ )



Immunohistochemistry of paraffin-embedded Human colorectal cancer tissue using TA366728 (SIMC1 Antibody) at dilution 1/80, treated with fusion protein. (Original magnification:  $\times 200$ )



Immunohistochemistry of paraffin-embedded Human thyroid cancer tissue using TA366728 (SIMC1 Antibody) at dilution 1/80 (Original magnification:  $\times 200$ )



Immunohistochemistry of paraffin-embedded Human thyroid cancer tissue using TA366728 (SIMC1 Antibody) at dilution 1/80, treated with fusion protein. (Original magnification:  $\times 200$ )