

## Product datasheet for **TA366727**

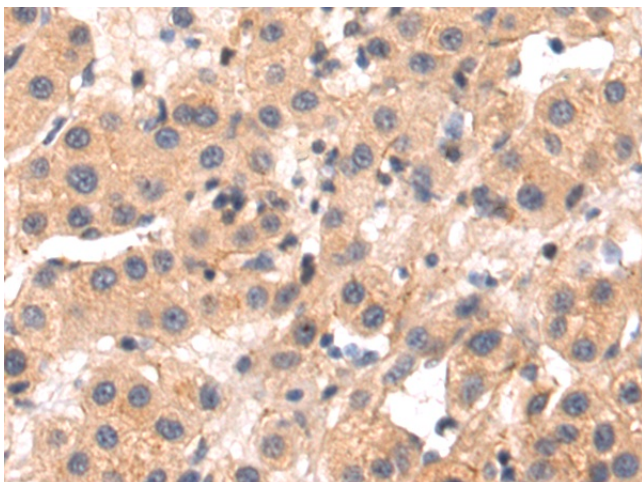
### **TMEM38B Rabbit Polyclonal Antibody**

#### **Product data:**

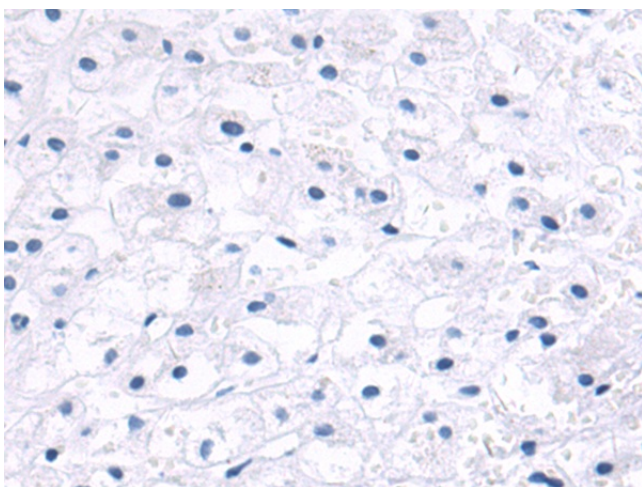
Product Type:	Primary Antibodies
Applications:	IHC
Recommended Dilution:	IHC: 50-200 Positive control: Human liver cancer Predicted cell location: Cytoplasm
Reactivity:	Human
Host:	Rabbit
Isotype:	IgG
Clonality:	Polyclonal
Immunogen:	Fusion protein of human TMEM38B
Formulation:	pH7.4 PBS, 0.05% NaN <sub>3</sub> , 40% Glycerol
Concentration:	lot specific
Purification:	Antigen affinity purification
Conjugation:	Unconjugated
Storage:	Store at -20°C.
Stability:	1 year
Gene Name:	transmembrane protein 38B
Database Link:	<a href="#">Entrez Gene 55151 Human Q9NVV0</a>
Background:	This gene encodes an intracellular monovalent cation channel that functions in maintenance of intracellular calcium release. Mutations in this gene may be associated with autosomal recessive osteogenesis.
Synonyms:	bA219P18.1; C9orf87; D4Erttd89e; FLJ10493; TRIC-B; TRICB



[View online »](#)

**Product images:**

Immunohistochemistry of paraffin-embedded Human liver cancer tissue using TA366727 (TMEM38B Antibody) at dilution 1/55 (Original magnification:  $\times 200$ )



Immunohistochemistry of paraffin-embedded Human liver cancer tissue using TA366727 (TMEM38B Antibody) at dilution 1/55, treated with fusion protein. (Original magnification:  $\times 200$ )