

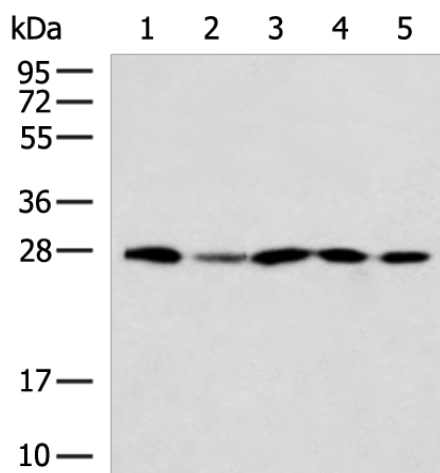
## Product datasheet for TA366722S

### DNAJB8 Rabbit Polyclonal Antibody

#### Product data:

<b>Product Type:</b>	Primary Antibodies
<b>Applications:</b>	WB
<b>Recommended Dilution:</b>	WB: 500–2000 WB positive control: 293T, TM4 cell, Mouse brain tissue, HeLa, A549 cell lysates
<b>Reactivity:</b>	Human, Mouse
<b>Host:</b>	Rabbit
<b>Isotype:</b>	IgG
<b>Clonality:</b>	Polyclonal
<b>Immunogen:</b>	Fusion protein of human DNAJB8
<b>Formulation:</b>	pH7.4 PBS, 0.05% NaN <sub>3</sub> , 40% Glycerol
<b>Purification:</b>	Antigen affinity purification
<b>Conjugation:</b>	Unconjugated
<b>Storage:</b>	Store at -20°C.
<b>Stability:</b>	1 year
<b>Predicted Protein Size:</b>	26 kDa
<b>Gene Name:</b>	DnaJ heat shock protein family (Hsp40) member B8
<b>Database Link:</b>	<a href="#">Entrez Gene 165721 Human Q8NHS0</a>
<b>Background:</b>	The protein encoded by this gene belongs to the DNAJ/HSP40 family of proteins that regulate chaperone activity. This family member suppresses aggregation and toxicity of polyglutamine proteins, and the C-terminal tail is essential for this activity. It has been implicated as a cancer-testis antigen and as a cancer stem-like cell antigen involved in renal cell carcinoma.
<b>Synonyms:</b>	DJ6; MGC33884



**Product images:**

Gel: 12%SDS-PAGE

Lysate: 40  $\mu$ g

Lane 1-5: 293T

TM4 cell

Mouse brain tissue

Hela

A549 cell lysates

Primary antibody: [TA366722] (DNAJB8 Antibody) at dilution 1/400

Secondary antibody: Goat anti rabbit IgG at 1/5000 dilution

Exposure time: 20 seconds