

Product datasheet for **TA366720**

C6orf134 (ATAT1) Rabbit Polyclonal Antibody

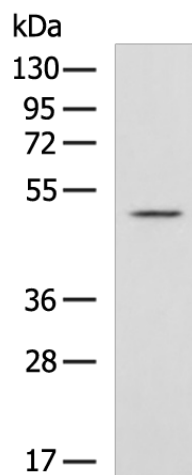
Product data:

Product Type:	Primary Antibodies
Applications:	WB
Recommended Dilution:	WB: 200-1000 WB positive control: A431 cell lysate
Reactivity:	Human, Mouse, Rat
Host:	Rabbit
Isotype:	IgG
Clonality:	Polyclonal
Immunogen:	Fusion protein of human ATAT1
Formulation:	pH7.4 PBS, 0.05% NaN ₃ , 40% Glycerol
Concentration:	lot specific
Purification:	Antigen affinity purification
Conjugation:	Unconjugated
Storage:	Store at -20°C.
Stability:	1 year
Predicted Protein Size:	47 kDa
Gene Name:	alpha tubulin acetyltransferase 1
Database Link:	Entrez Gene 79969 Human Q5SQI0
Background:	This gene encodes a protein that localizes to clathrin-coated pits, where it acetylates alpha tubulin on lysine 40. This process may be important in microtubule growth, for instance during chemotaxis and the formation of cilium. Alternative splicing results in multiple transcript variants.
Synonyms:	0610011P08Rik; 2610008K08Rik; 2610110G12Rik; 3110080J08Rik; Mec17; RGD1303066; RP24-180B11.6; TAT



[View online »](#)

Product images:



Gel: 8%SDS-PAGE

Lysate: 40 μ g

Lane: A431 cell lysate

Primary antibody: TA366720 (ATAT1 Antibody) at dilution 1/550

Secondary antibody: Goat anti rabbit IgG at 1/5000 dilution

Exposure time: 90 seconds