

Product datasheet for **TA366715**

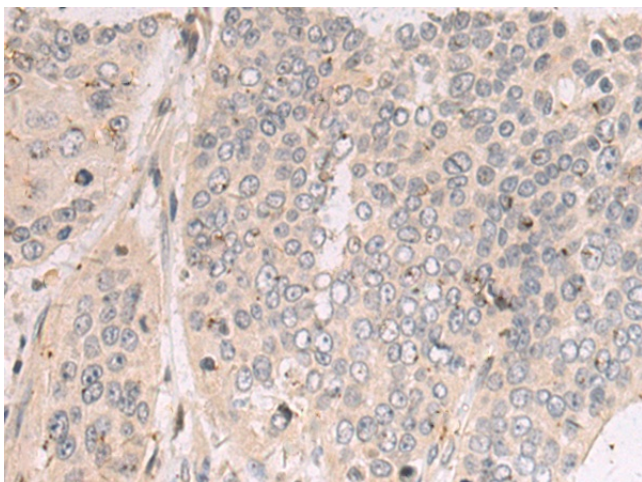
TDRD7 Rabbit Polyclonal Antibody

Product data:

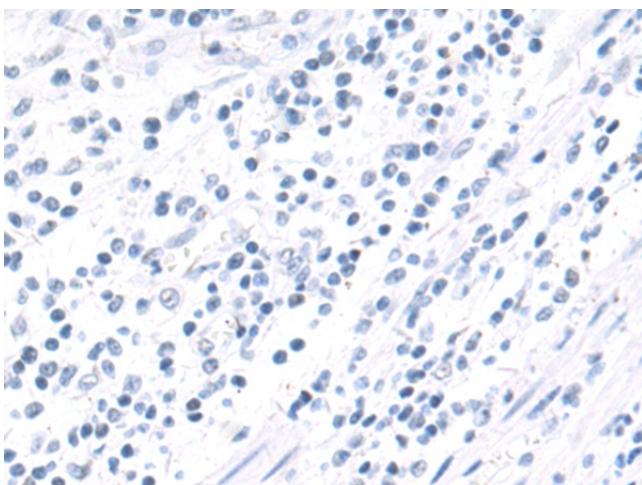
Product Type:	Primary Antibodies
Applications:	IHC
Recommended Dilution:	IHC: 50-100 Positive control: Human esophagus cancer Predicted cell location: Cytoplasm
Reactivity:	Human, Mouse, Rat
Host:	Rabbit
Isotype:	IgG
Clonality:	Polyclonal
Immunogen:	Fusion protein of human TDRD7
Formulation:	pH7.4 PBS, 0.05% NaN ₃ , 40% Glycerol
Concentration:	lot specific
Purification:	Antigen affinity purification
Conjugation:	Unconjugated
Storage:	Store at -20°C.
Stability:	1 year
Gene Name:	tudor domain containing 7
Database Link:	Entrez Gene 23424 Human Q8NHU6
Background:	The protein encoded by this gene belongs to the Tudor family of proteins. This protein contains conserved Tudor domains and LOTUS domains. It is a component of RNA granules, which function in RNA processing. Mutations in this gene have been associated with cataract formation in mouse and human. Alternative splicing results in multiple transcript variants.
Synonyms:	CATC4; PCTAIRE2BP; RP11-508D10.1; TRAP



[View online »](#)

Product images:

Immunohistochemistry of paraffin-embedded Human esophagus cancer tissue using TA366715 (TDRD7 Antibody) at dilution 1/50 (Original magnification: $\times 200$)



Immunohistochemistry of paraffin-embedded Human esophagus cancer tissue using TA366715 (TDRD7 Antibody) at dilution 1/50, treated with fusion protein. (Original magnification: $\times 200$)