

Product datasheet for **TA366701**

RPS7 Rabbit Polyclonal Antibody

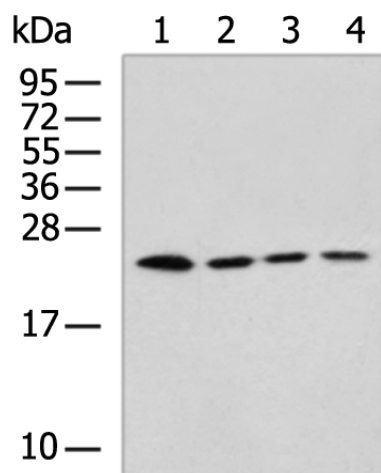
Product data:

Product Type:	Primary Antibodies
Applications:	WB
Recommended Dilution:	WB: 500-2000 WB positive control: RAW264.7 cell, Mouse liver tissue, Rat liver tissue, A549 cell lysates
Reactivity:	Human, Mouse, Rat
Host:	Rabbit
Isotype:	IgG
Clonality:	Polyclonal
Immunogen:	Fusion protein of human RPS7
Formulation:	pH7.4 PBS, 0.05% NaN ₃ , 40% Glycerol
Concentration:	lot specific
Purification:	Antigen affinity purification
Conjugation:	Unconjugated
Storage:	Store at -20°C.
Stability:	1 year
Predicted Protein Size:	22 kDa
Gene Name:	ribosomal protein S7
Database Link:	Entrez Gene 6201 Human P62081
Background:	Ribosomes, the organelles that catalyze protein synthesis, consist of a small 40S subunit and a large 60S subunit. Together these subunits are composed of 4 RNA species and approximately 80 structurally distinct proteins. This gene encodes a ribosomal protein that is a component of the 40S subunit. The protein belongs to the S7E family of ribosomal proteins. It is located in the cytoplasm. As is typical for genes encoding ribosomal proteins, there are multiple processed pseudogenes of this gene dispersed through the genome.
Synonyms:	DBA8; OTTHUMP00000200057; OTTHUMP00000200058



[View online »](#)

Product images:



Gel: 12%SDS-PAGE

Lysate: 40 μ g

Lane 1-4: RAW264.7 cell

Mouse liver tissue

Rat liver tissue

A549 cell lysates

Primary antibody: TA366701 (RPS7 Antibody) at dilution 1/700

Secondary antibody: Goat anti rabbit IgG at 1/5000 dilution

Exposure time: 1 minute