

Product datasheet for **TA366697S**

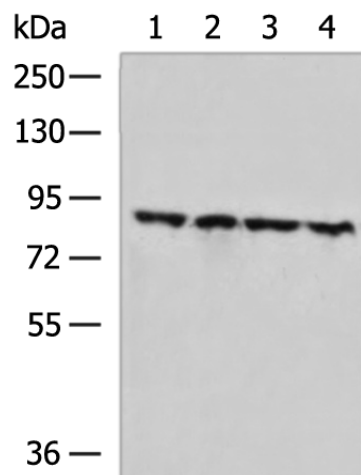
ZNF184 Rabbit Polyclonal Antibody

Product data:

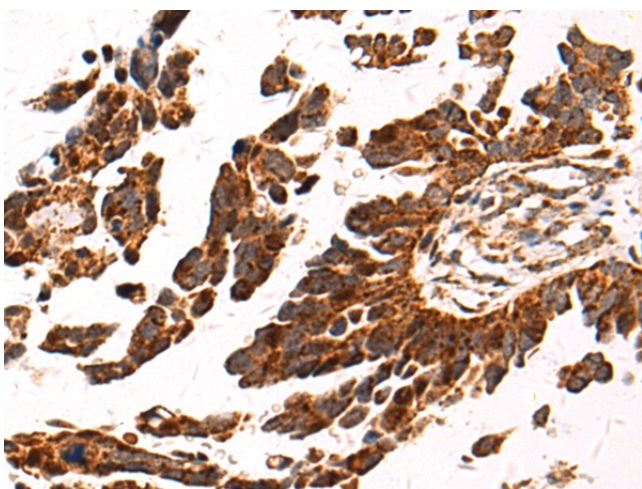
Product Type:	Primary Antibodies
Applications:	IHC, WB
Recommended Dilution:	WB: 1000-5000 WB positive control: 293T cell, LO2 cell, Raji cell, RAMOS cell lysates IHC: 100-300 Positive control: Human colorectal cancer Predicted cell location: Nucleus
Reactivity:	Human
Host:	Rabbit
Isotype:	IgG
Clonality:	Polyclonal
Immunogen:	Fusion protein of human ZNF184
Formulation:	pH7.4 PBS, 0.05% NaN ₃ , 40% Glycerol
Purification:	Antigen affinity purification
Conjugation:	Unconjugated
Storage:	Store at -20°C.
Stability:	1 year
Predicted Protein Size:	86 kDa
Gene Name:	zinc finger protein 184
Database Link:	Entrez Gene 7738 Human Q99676
Background:	The protein encoded by this gene is predicted to be a Kruppel C2H2-type zinc-finger protein family member. Sequence analysis predicts that the protein contains two Kruppel associated box (KRAB) boxes in the N-terminus and highly conserved zinc finger motifs at the C-terminus. Alternative splicing results in multiple transcript variants.
Synonyms:	OTTHUMP00000016181



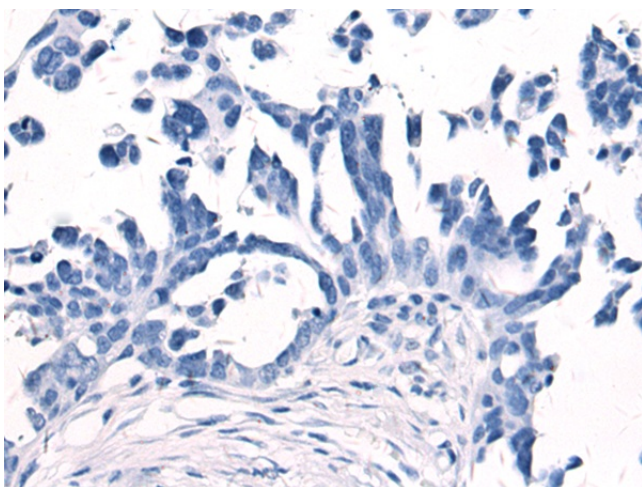
[View online »](#)

Product images:


Gel: 6%SDS-PAGE
 Lysate: 40 µg
 Lane 1-4: 293T cell
 LO2 cell
 Raji cell
 RAMOS cell lysates
 Primary antibody: [TA366697] (ZNF184 Antibody)
 at dilution 1/800
 Secondary antibody: Goat anti rabbit IgG at
 1/5000 dilution
 Exposure time: 2 minutes



Immunohistochemistry of paraffin-embedded
 Human colorectal cancer tissue using [TA366697]
 (ZNF184 Antibody) at dilution 1/85 (Original
 magnification: ×200)



Immunohistochemistry of paraffin-embedded Human colorectal cancer tissue using [TA366697] (ZNF184 Antibody) at dilution 1/85, treated with fusion protein. (Original magnification: ×200)