

## Product datasheet for **TA366697**

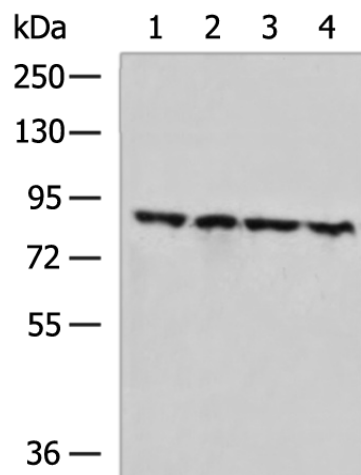
### ZNF184 Rabbit Polyclonal Antibody

#### Product data:

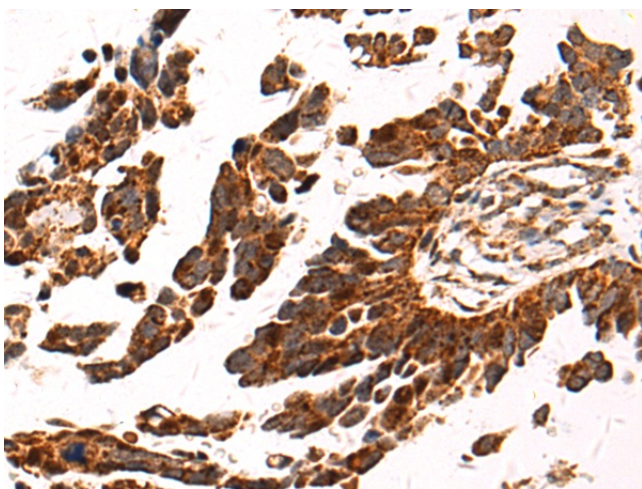
Product Type:	Primary Antibodies
Applications:	IHC, WB
Recommended Dilution:	WB: 1000-5000 WB positive control: 293T cell, LO2 cell, Raji cell, RAMOS cell lysates IHC: 100-300 Positive control: Human colorectal cancer Predicted cell location: Nucleus
Reactivity:	Human
Host:	Rabbit
Isotype:	IgG
Clonality:	Polyclonal
Immunogen:	Fusion protein of human ZNF184
Formulation:	pH7.4 PBS, 0.05% NaN <sub>3</sub> , 40% Glycerol
Concentration:	lot specific
Purification:	Antigen affinity purification
Conjugation:	Unconjugated
Storage:	Store at -20°C.
Stability:	1 year
Predicted Protein Size:	86 kDa
Gene Name:	zinc finger protein 184
Database Link:	<a href="#">Entrez Gene 7738 Human Q99676</a>
Background:	The protein encoded by this gene is predicted to be a Kruppel C2H2-type zinc-finger protein family member. Sequence analysis predicts that the protein contains two Kruppel associated box (KRAB) boxes in the N-terminus and highly conserved zinc finger motifs at the C-terminus. Alternative splicing results in multiple transcript variants.
Synonyms:	OTTHUMP00000016181



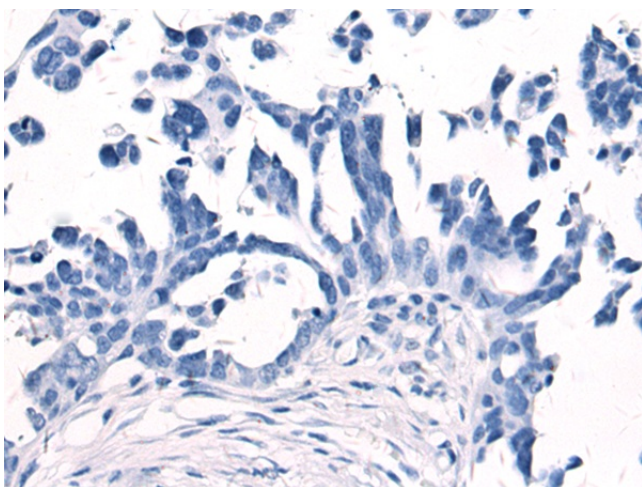
[View online »](#)

**Product images:**

Gel: 6%SDS-PAGE  
Lysate: 40  $\mu$ g  
Lane 1-4: 293T cell  
LO2 cell  
Raji cell  
RAMOS cell lysates  
Primary antibody: TA366697 (ZNF184 Antibody)  
at dilution 1/800  
Secondary antibody: Goat anti rabbit IgG at  
1/5000 dilution  
Exposure time: 2 minutes



Immunohistochemistry of paraffin-embedded  
Human colorectal cancer tissue using TA366697  
(ZNF184 Antibody) at dilution 1/85 (Original  
magnification:  $\times 200$ )



Immunohistochemistry of paraffin-embedded Human colorectal cancer tissue using TA366697 (ZNF184 Antibody) at dilution 1/85, treated with fusion protein. (Original magnification:  $\times 200$ )