

## Product datasheet for **TA366692S**

### Rhophilin 2 (RHPN2) Rabbit Polyclonal Antibody

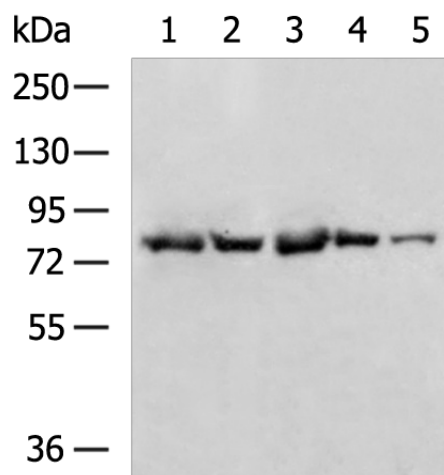
#### Product data:

Product Type:	Primary Antibodies
Applications:	IHC, WB
Recommended Dilution:	WB: 500-2000 WB positive control: HepG2, LOVO, SKOV3, A549, 231 cell lysates IHC: 100-300 Positive control: Human colorectal cancer Predicted cell location: Cytoplasm
Reactivity:	Human, Mouse
Host:	Rabbit
Isotype:	IgG
Clonality:	Polyclonal
Immunogen:	Fusion protein of human RHPN2
Formulation:	pH7.4 PBS, 0.05% NaN <sub>3</sub> , 40% Glycerol
Purification:	Antigen affinity purification
Conjugation:	Unconjugated
Storage:	Store at -20°C.
Stability:	1 year
Predicted Protein Size:	77 kDa
Gene Name:	rhophilin, Rho GTPase binding protein 2
Database Link:	<a href="#">Entrez Gene 85415 Human</a> <a href="#">Q8IUC4</a>
Background:	This gene encodes a member of the rhophilin family of Ras-homologous (Rho)-GTPase binding proteins. The encoded protein binds both GTP- and GDP-bound RhoA and GTP-bound RhoB and may be involved in the organization of the actin cytoskeleton.
Synonyms:	P76RBE; RHOBP

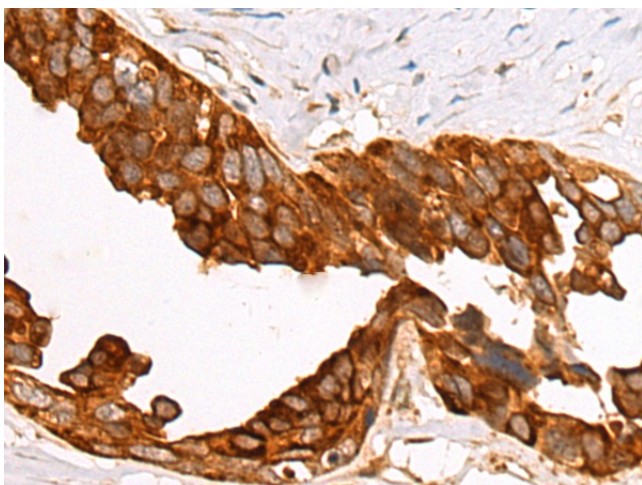


[View online »](#)

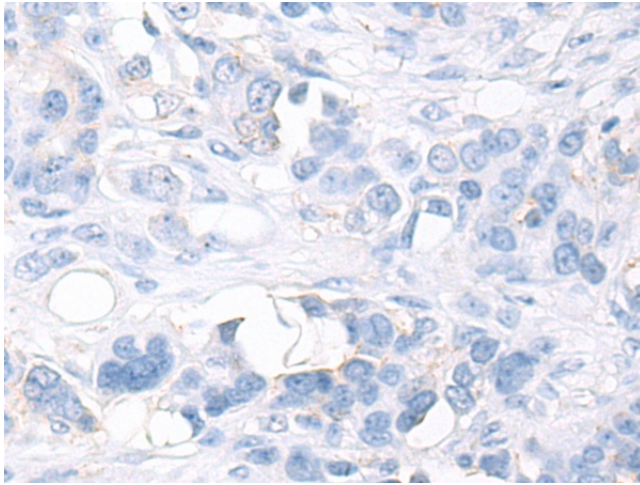
## Product images:



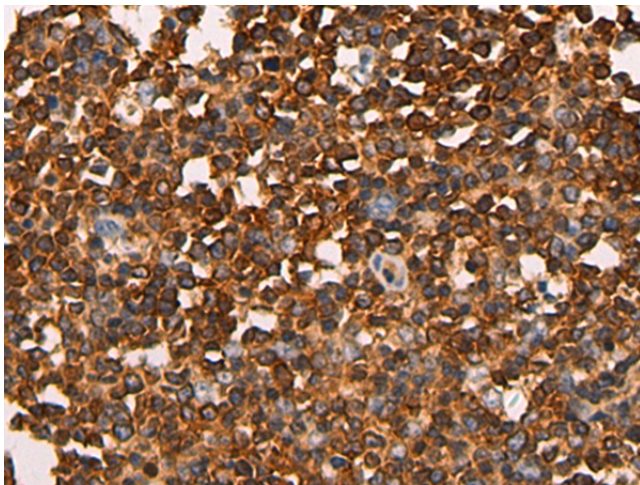
Gel: 6%SDS-PAGE  
Lysate: 40  $\mu$ g  
Lane 1-5: HepG2  
LOVO  
SKOV3  
A549  
231 cell lysates  
Primary antibody: [TA366692] (RHPN2 Antibody)  
at dilution 1/600  
Secondary antibody: Goat anti rabbit IgG at  
1/5000 dilution  
Exposure time: 30 seconds



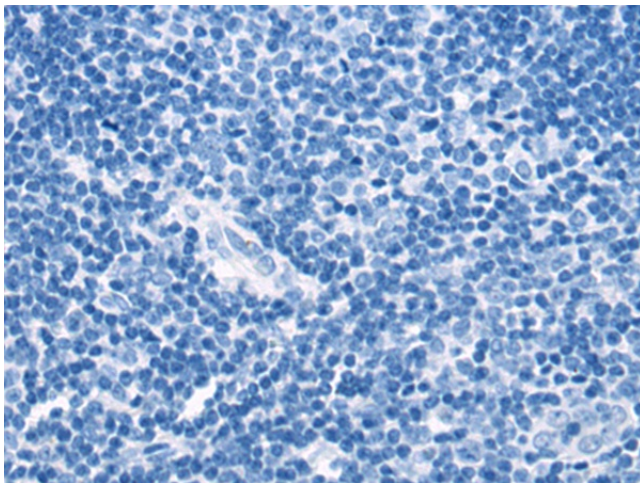
Immunohistochemistry of paraffin-embedded  
Human colorectal cancer tissue using [TA366692]  
(RHPN2 Antibody) at dilution 1/85 (Original  
magnification:  $\times$ 200)



Immunohistochemistry of paraffin-embedded Human colorectal cancer tissue using [TA366692] (RHPN2 Antibody) at dilution 1/85, treated with fusion protein. (Original magnification: ×200)



Immunohistochemistry of paraffin-embedded Human tonsil tissue using [TA366692] (RHPN2 Antibody) at dilution 1/85 (Original magnification: ×200)



Immunohistochemistry of paraffin-embedded Human tonsil tissue using [TA366692] (RHPN2 Antibody) at dilution 1/85, treated with fusion protein. (Original magnification: ×200)