

## Product datasheet for **TA366689S**

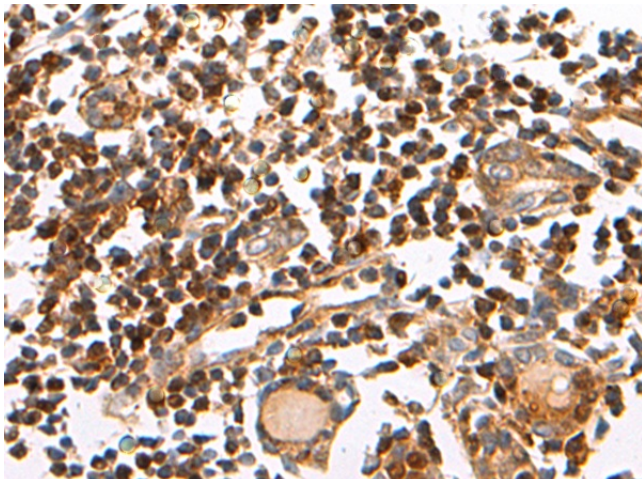
### SHCBP1 Rabbit Polyclonal Antibody

#### Product data:

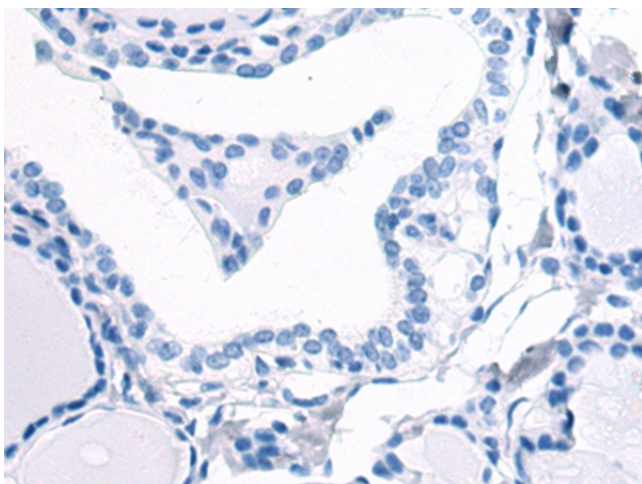
Product Type:	Primary Antibodies
Applications:	IHC
Recommended Dilution:	IHC: 50-200 Positive control: Human thyroid cancer Predicted cell location: Cytoplasm
Reactivity:	Human
Host:	Rabbit
Isotype:	IgG
Clonality:	Polyclonal
Immunogen:	Fusion protein of human SHCBP1
Formulation:	pH7.4 PBS, 0.05% NaN <sub>3</sub> , 40% Glycerol
Purification:	Antigen affinity purification
Conjugation:	Unconjugated
Storage:	Store at -20°C.
Stability:	1 year
Gene Name:	SHC binding and spindle associated 1
Database Link:	<a href="#">Entrez Gene 79801 Human Q8NEM2</a>
Background:	May play a role in signaling pathways governing cellular proliferation, cell growth and differentiation. May be a component of a novel signaling pathway downstream of Shc. Acts as a positive regulator of FGF signaling in neural progenitor cells.
Synonyms:	FLJ22009; MGC26900; PAL



[View online »](#)

**Product images:**

Immunohistochemistry of paraffin-embedded Human thyroid cancer tissue using [TA366689] (SHCBP1 Antibody) at dilution 1/85 (Original magnification:  $\times 200$ )



Immunohistochemistry of paraffin-embedded Human thyroid cancer tissue using [TA366689] (SHCBP1 Antibody) at dilution 1/85, treated with fusion protein. (Original magnification:  $\times 200$ )