

## Product datasheet for **TA366681S**

### PI 3 Kinase p85 alpha (PIK3R1) Rabbit Polyclonal Antibody

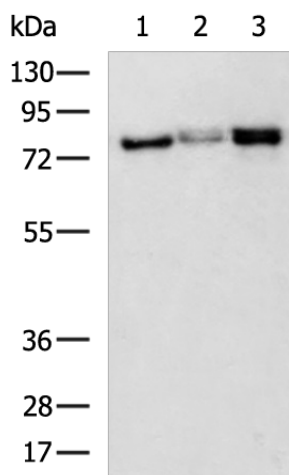
#### Product data:

Product Type:	Primary Antibodies
Applications:	IHC, WB
Recommended Dilution:	WB: 500-2000 WB positive control: A549, Jurkat, Raji cell lysates IHC: 50-200 Positive control: Human esophagus cancer Predicted cell location: Cytoplasm
Reactivity:	Human, Mouse, Rat
Host:	Rabbit
Isotype:	IgG
Clonality:	Polyclonal
Immunogen:	Fusion protein of human PIK3R1
Formulation:	pH7.4 PBS, 0.05% NaN <sub>3</sub> , 40% Glycerol
Purification:	Antigen affinity purification
Conjugation:	Unconjugated
Storage:	Store at -20°C.
Stability:	1 year
Predicted Protein Size:	84 kDa
Gene Name:	phosphoinositide-3-kinase regulatory subunit 1
Database Link:	<a href="#">Entrez Gene 5295 Human P27986</a>
Background:	Phosphatidylinositol 3-kinase phosphorylates the inositol ring of phosphatidylinositol at the 3-prime position. The enzyme comprises a 110 kD catalytic subunit and a regulatory subunit of either 85, 55, or 50 kD. This gene encodes the 85 kD regulatory subunit. Phosphatidylinositol 3-kinase plays an important role in the metabolic actions of insulin, and a mutation in this gene has been associated with insulin resistance. Alternative splicing of this gene results in four transcript variants encoding different isoforms.
Synonyms:	GRB1; p85; p85-ALPHA; PI3K

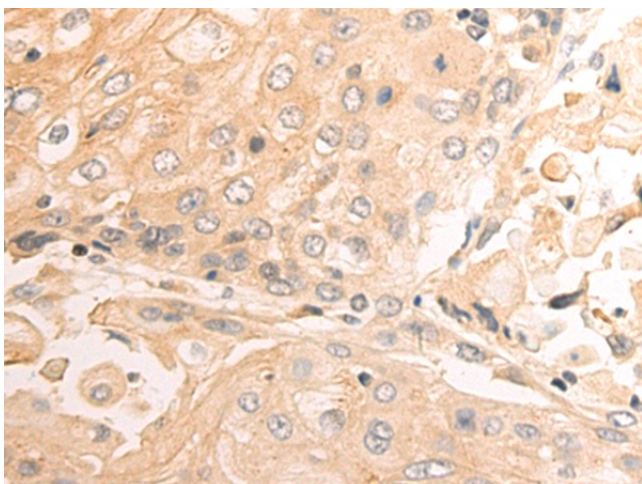


[View online »](#)

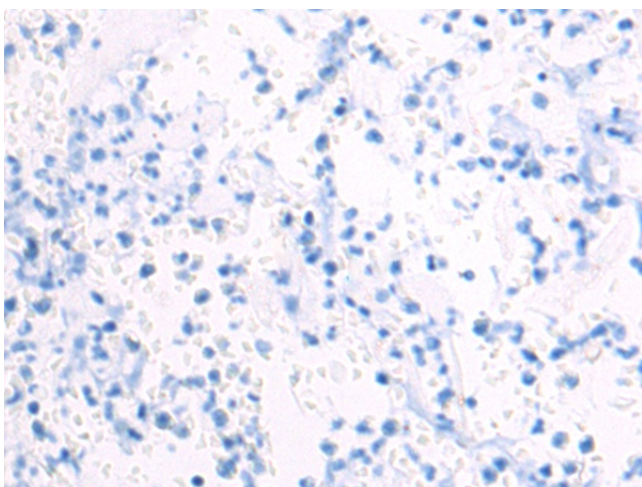
## Product images:



Gel: 8%SDS-PAGE  
Lysate: 40  $\mu$ g  
Lane 1-3: A549  
Jurkat  
Raji cell lysates  
Primary antibody: [TA366681] (PIK3R1 Antibody)  
at dilution 1/550  
Secondary antibody: Goat anti rabbit IgG at  
1/5000 dilution  
Exposure time: 3 seconds



Immunohistochemistry of paraffin-embedded  
Human esophagus cancer tissue using  
[TA366681] (PIK3R1 Antibody) at dilution 1/50  
(Original magnification:  $\times 200$ )



Immunohistochemistry of paraffin-embedded Human esophagus cancer tissue using [TA366681] (PIK3R1 Antibody) at dilution 1/50, treated with fusion protein. (Original magnification:  $\times 200$ )