

Product datasheet for **TA366671S**

SP110 Rabbit Polyclonal Antibody

Product data:

Product Type:	Primary Antibodies
Applications:	IHC, WB
Recommended Dilution:	WB: 500-2000 WB positive control: LOVO cell lysate IHC: 50-200 Positive control: Human breast cancer Predicted cell location: Nucleus
Reactivity:	Human
Host:	Rabbit
Isotype:	IgG
Clonality:	Polyclonal
Immunogen:	Fusion protein of human SP110
Formulation:	pH7.4 PBS, 0.05% NaN ₃ , 40% Glycerol
Purification:	Antigen affinity purification
Conjugation:	Unconjugated
Storage:	Store at -20°C.
Stability:	1 year
Predicted Protein Size:	78 kDa
Gene Name:	SP110 nuclear body protein
Database Link:	Entrez Gene 3431 Human Q9HB58

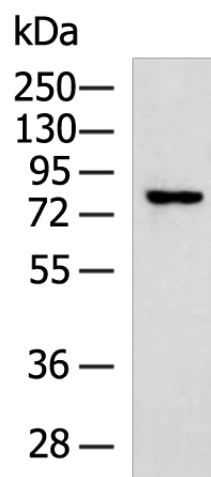
Background: The nuclear body is a multiprotein complex that may have a role in the regulation of gene transcription. This gene is a member of the SP100/SP140 family of nuclear body proteins and encodes a leukocyte-specific nuclear body component. The protein can function as an activator of gene transcription and may serve as a nuclear hormone receptor coactivator. In addition, it has been suggested that the protein may play a role in ribosome biogenesis and in the induction of myeloid cell differentiation. Alternative splicing has been observed for this gene and three transcript variants, encoding distinct isoforms, have been identified.



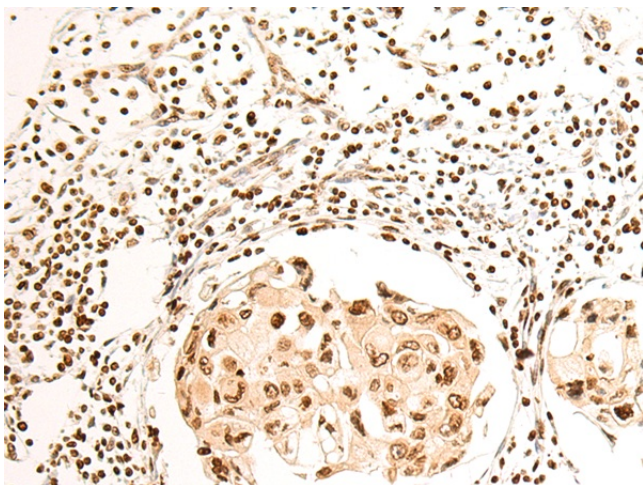
[View online »](#)

Synonyms: FLJ22835; IFI41; IFI75; IPR1; VODI

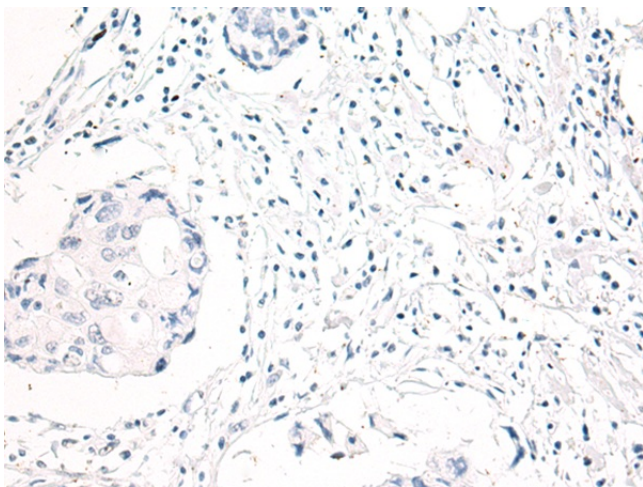
Product images:



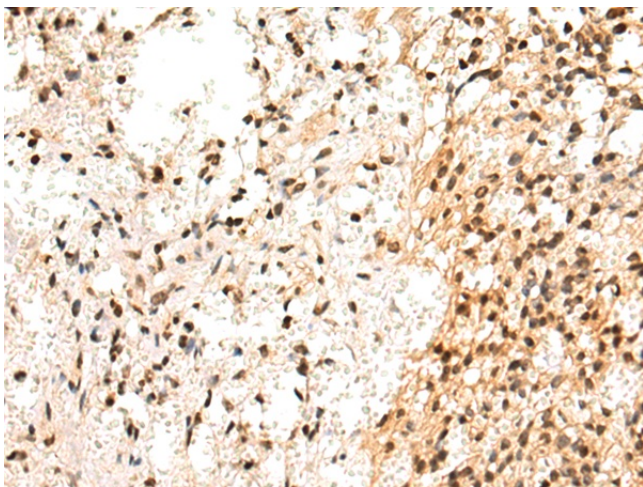
Gel: 8%SDS-PAGE
Lysate: 40 μ g
Lane: LOVO cell lysate
Primary antibody: [TA366671] (SP110 Antibody) at dilution 1/600
Secondary antibody: Goat anti rabbit IgG at 1/5000 dilution
Exposure time: 30 seconds



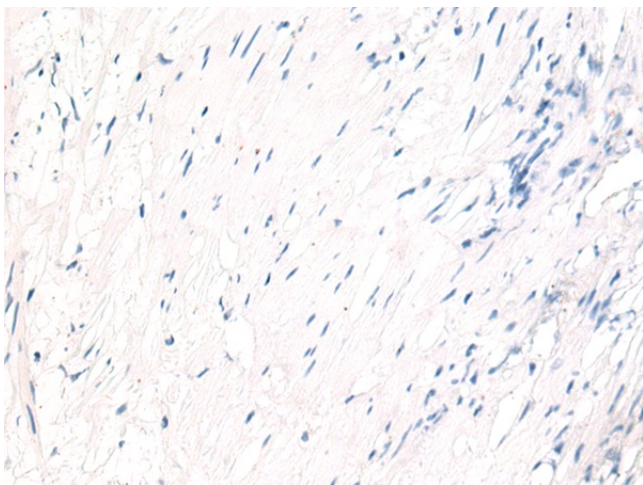
Immunohistochemistry of paraffin-embedded Human breast cancer tissue using [TA366671] (SP110 Antibody) at dilution 1/85 (Original magnification: \times 200)



Immunohistochemistry of paraffin-embedded Human breast cancer tissue using [TA366671] (SP110 Antibody) at dilution 1/85, treated with fusion protein. (Original magnification: x200)



Immunohistochemistry of paraffin-embedded Human prostate cancer tissue using [TA366671] (SP110 Antibody) at dilution 1/85 (Original magnification: x200)



Immunohistochemistry of paraffin-embedded Human prostate cancer tissue using [TA366671] (SP110 Antibody) at dilution 1/85, treated with fusion protein. (Original magnification: x200)