

Product datasheet for **TA366668S**

PTBP2 Rabbit Polyclonal Antibody

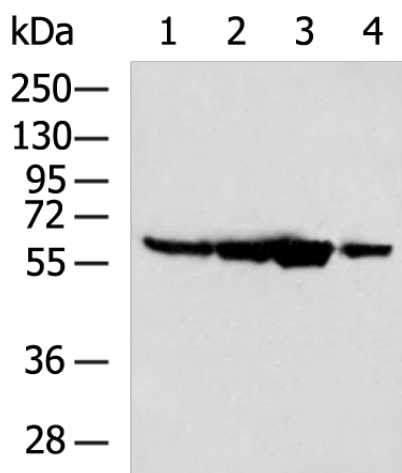
Product data:

Product Type:	Primary Antibodies
Applications:	IHC, WB
Recommended Dilution:	WB: 1000-5000 WB positive control: Mouse testis tissue, Hela cell, LOVO cell, HepG2 cell lysates IHC: 100-300 Positive control: Human gastric cancer Predicted cell location: Nucleus
Reactivity:	Human, Mouse, Rat
Host:	Rabbit
Isotype:	IgG
Clonality:	Polyclonal
Immunogen:	Fusion protein of human PTBP2
Formulation:	pH7.4 PBS, 0.05% NaN ₃ , 40% Glycerol
Purification:	Antigen affinity purification
Conjugation:	Unconjugated
Storage:	Store at -20°C.
Stability:	1 year
Predicted Protein Size:	57 kDa
Gene Name:	polypyrimidine tract binding protein 2
Database Link:	Entrez Gene 58155 Human Q9UKA9
Background:	The protein encoded by this gene binds to intronic polypyrimidine clusters in pre-mRNA molecules and is implicated in controlling the assembly of other splicing-regulatory proteins. This protein is very similar to the polypyrimidine tract binding protein (PTB) but most of its isoforms are expressed primarily in the brain. Alternative splicing results in multiple transcript variants.
Synonyms:	brPTB; FLJ34897; nPTB; nPTB5; nPTB6; nPTB7; nPTB8; PTB; PTB-like; PTBLP



[View online »](#)

Product images:



Gel: 8%SDS-PAGE

Lysate: 40 µg

Lane 1-4: Mouse testis tissue

Hela cell

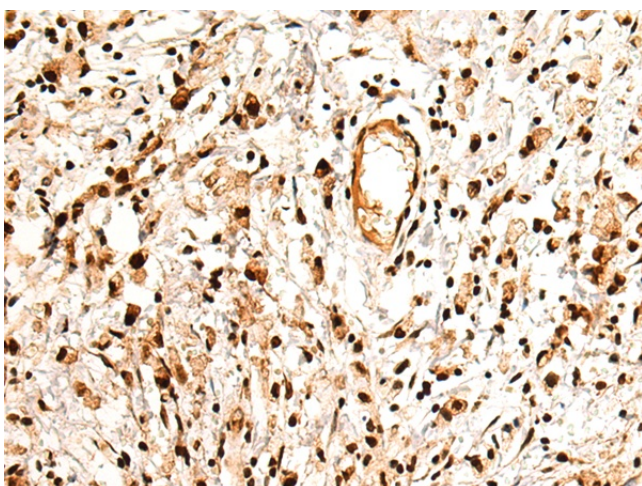
LOVO cell

HepG2 cell lysates

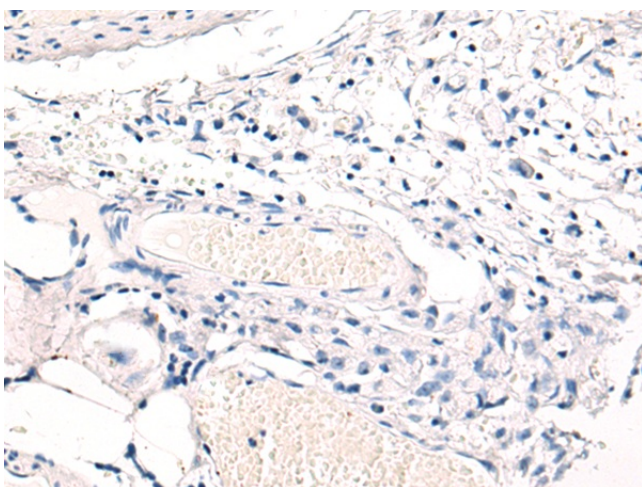
Primary antibody: [TA366668] (PTBP2 Antibody)
at dilution 1/900

Secondary antibody: Goat anti rabbit IgG at
1/5000 dilution

Exposure time: 3 seconds



Immunohistochemistry of paraffin-embedded
Human gastric cancer tissue using [TA366668]
(PTBP2 Antibody) at dilution 1/125 (Original
magnification: ×200)



Immunohistochemistry of paraffin-embedded
Human gastric cancer tissue using [TA366668]
(PTBP2 Antibody) at dilution 1/125, treated with
fusion protein. (Original magnification: ×200)