

Product datasheet for **TA366668**

PTBP2 Rabbit Polyclonal Antibody

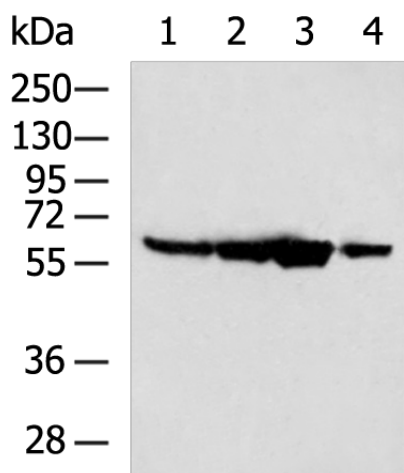
Product data:

Product Type:	Primary Antibodies
Applications:	IHC, WB
Recommended Dilution:	WB: 1000-5000 WB positive control: Mouse testis tissue, Hela cell, LOVO cell, HepG2 cell lysates IHC: 100-300 Positive control: Human gastric cancer Predicted cell location: Nucleus
Reactivity:	Human, Mouse, Rat
Host:	Rabbit
Isotype:	IgG
Clonality:	Polyclonal
Immunogen:	Fusion protein of human PTBP2
Formulation:	pH7.4 PBS, 0.05% NaN ₃ , 40% Glycerol
Concentration:	lot specific
Purification:	Antigen affinity purification
Conjugation:	Unconjugated
Storage:	Store at -20°C.
Stability:	1 year
Predicted Protein Size:	57 kDa
Gene Name:	polypyrimidine tract binding protein 2
Database Link:	Entrez Gene 58155 Human Q9UKA9
Background:	The protein encoded by this gene binds to intronic polypyrimidine clusters in pre-mRNA molecules and is implicated in controlling the assembly of other splicing-regulatory proteins. This protein is very similar to the polypyrimidine tract binding protein (PTB) but most of its isoforms are expressed primarily in the brain. Alternative splicing results in multiple transcript variants.
Synonyms:	brPTB; FLJ34897; nPTB; nPTB5; nPTB6; nPTB7; nPTB8; PTB; PTB-like; PTBLP

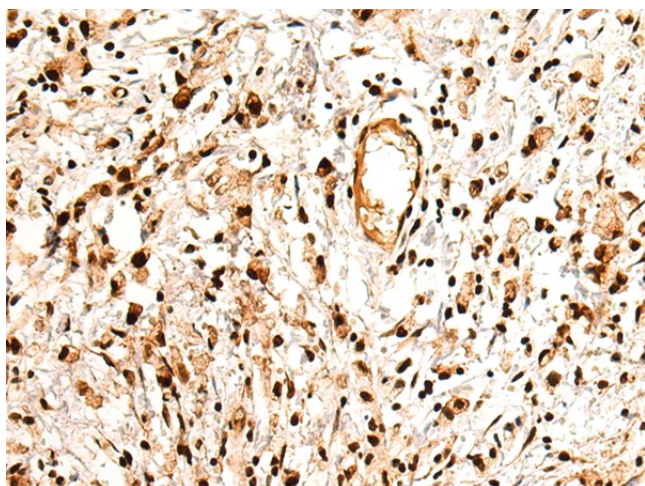


[View online »](#)

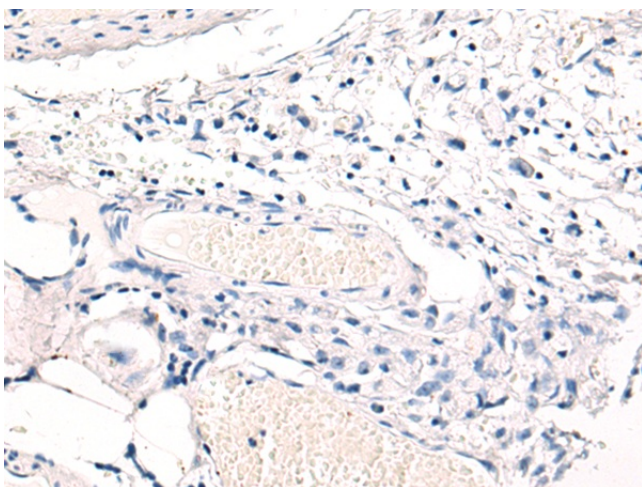
Product images:



Gel: 8%SDS-PAGE
Lysate: 40 μ g
Lane 1-4: Mouse testis tissue
Hela cell
LOVO cell
HepG2 cell lysates
Primary antibody: TA366668 (PTBP2 Antibody) at dilution 1/900
Secondary antibody: Goat anti rabbit IgG at 1/5000 dilution
Exposure time: 3 seconds



Immunohistochemistry of paraffin-embedded Human gastric cancer tissue using TA366668 (PTBP2 Antibody) at dilution 1/125 (Original magnification: \times 200)



Immunohistochemistry of paraffin-embedded Human gastric cancer tissue using TA366668 (PTBP2 Antibody) at dilution 1/125, treated with fusion protein. (Original magnification: $\times 200$)