

Product datasheet for **TA36666S**

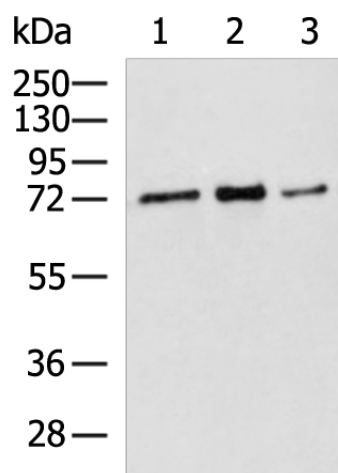
RPUSD2 Rabbit Polyclonal Antibody

Product data:

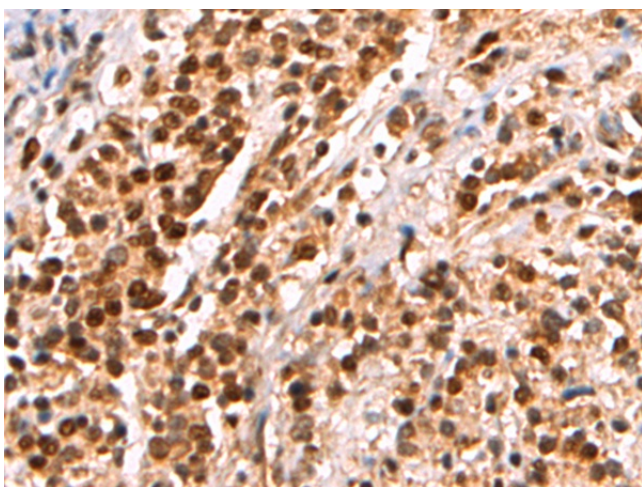
Product Type:	Primary Antibodies
Applications:	IHC, WB
Recommended Dilution:	WB: 1000-5000 WB positive control: Hela, 231 and 293T cell lysates IHC: 150-300 Positive control: Human gastric cancer Predicted cell location: Nucleus
Reactivity:	Human
Host:	Rabbit
Isotype:	IgG
Clonality:	Polyclonal
Immunogen:	Fusion protein of human RPUSD2
Formulation:	pH7.4 PBS, 0.05% NaN ₃ , 40% Glycerol
Purification:	Antigen affinity purification
Conjugation:	Unconjugated
Storage:	Store at -20°C.
Stability:	1 year
Predicted Protein Size:	61 kDa
Gene Name:	RNA pseudouridylate synthase domain containing 2
Database Link:	Entrez Gene 27079 Human Q8IZ73
Background:	The function of this protein remains unknown.
Synonyms:	C15orf19; C18B11; FLJ31409

[View online »](#)

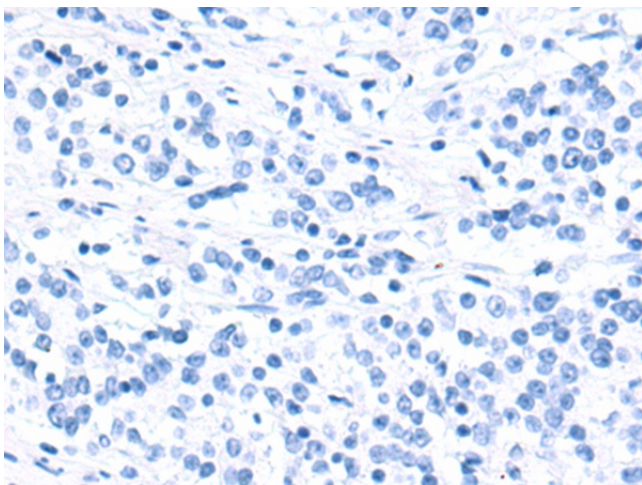
Product images:



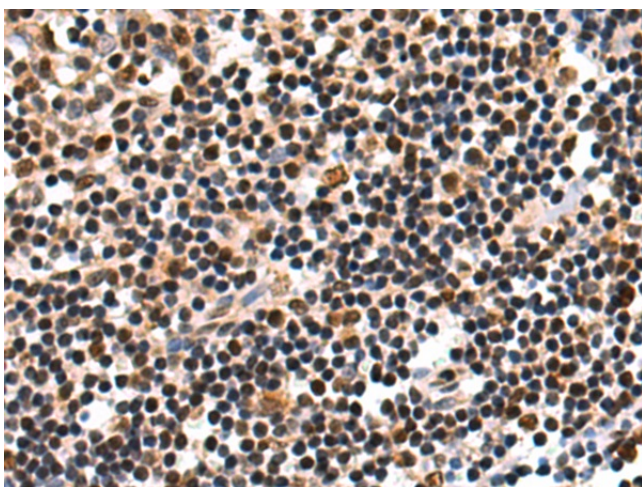
Gel: 8%SDS-PAGE
Lysate: 40 µg
Lane 1-3: HeLa
231 and 293T cell lysates
Primary antibody: [TA366666] (RPUSD2 Antibody)
at dilution 1/1300
Secondary antibody: Goat anti rabbit IgG at
1/5000 dilution
Exposure time: 2 minutes



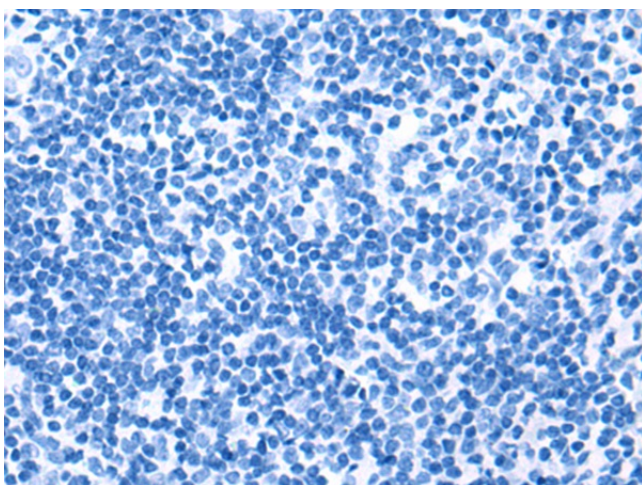
Immunohistochemistry of paraffin-embedded
Human gastric cancer tissue using [TA366666]
(RPUSD2 Antibody) at dilution 1/205 (Original
magnification: ×200)



Immunohistochemistry of paraffin-embedded Human gastric cancer tissue using [TA366666] (RPUSD2 Antibody) at dilution 1/205, treated with fusion protein. (Original magnification: ×200)



Immunohistochemistry of paraffin-embedded Human tonsil tissue using [TA366666] (RPUSD2 Antibody) at dilution 1/205 (Original magnification: ×200)



Immunohistochemistry of paraffin-embedded Human tonsil tissue using [TA366666] (RPUSD2 Antibody) at dilution 1/205, treated with fusion protein. (Original magnification: ×200)