

## Product datasheet for **TA366666**

### RPUSD2 Rabbit Polyclonal Antibody

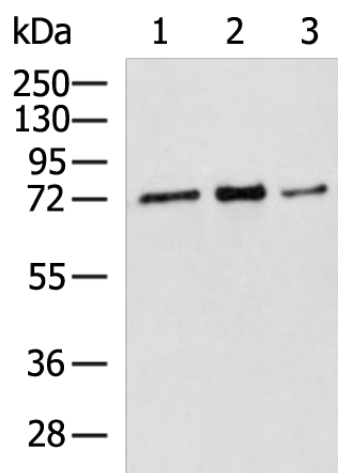
#### Product data:

Product Type:	Primary Antibodies
Applications:	IHC, WB
Recommended Dilution:	WB: 1000-5000 WB positive control: Hela, 231 and 293T cell lysates IHC: 150-300 Positive control: Human gastric cancer Predicted cell location: Nucleus
Reactivity:	Human
Host:	Rabbit
Isotype:	IgG
Clonality:	Polyclonal
Immunogen:	Fusion protein of human RPUSD2
Formulation:	pH7.4 PBS, 0.05% NaN <sub>3</sub> , 40% Glycerol
Concentration:	lot specific
Purification:	Antigen affinity purification
Conjugation:	Unconjugated
Storage:	Store at -20°C.
Stability:	1 year
Predicted Protein Size:	61 kDa
Gene Name:	RNA pseudouridylate synthase domain containing 2
Database Link:	<a href="#">Entrez Gene 27079 Human Q8IZ73</a>
Background:	The function of this protein remains unknown.
Synonyms:	C15orf19; C18B11; FLJ31409

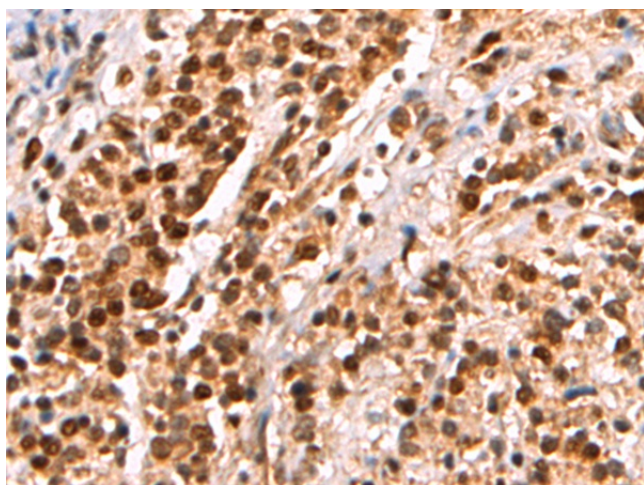


[View online »](#)

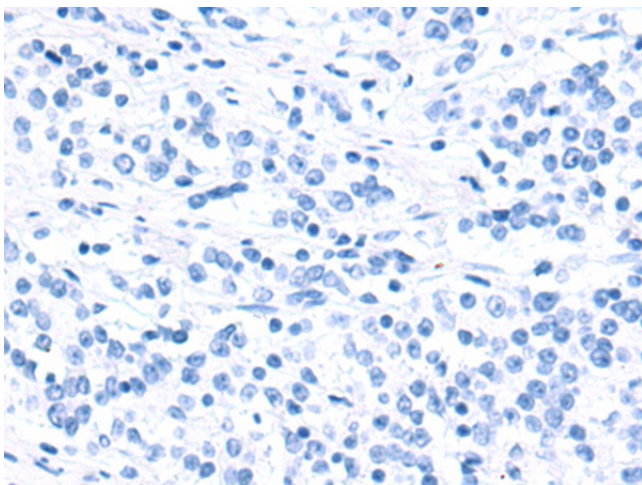
## Product images:



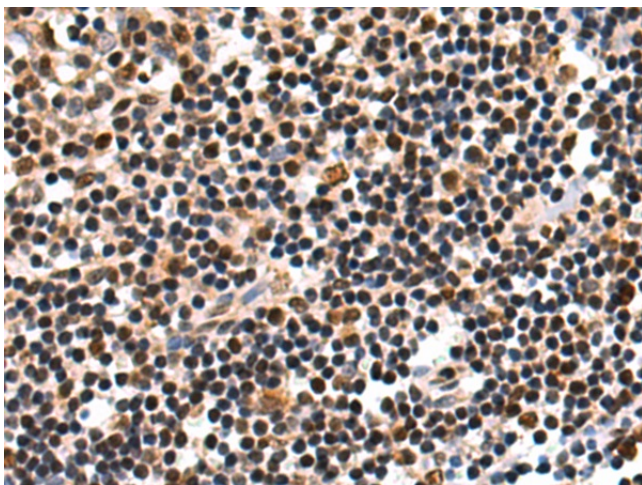
Gel: 8%SDS-PAGE  
Lysate: 40  $\mu$ g  
Lane 1-3: HeLa  
231 and 293T cell lysates  
Primary antibody: TA366666 (RPUSD2 Antibody)  
at dilution 1/1300  
Secondary antibody: Goat anti rabbit IgG at  
1/5000 dilution  
Exposure time: 2 minutes



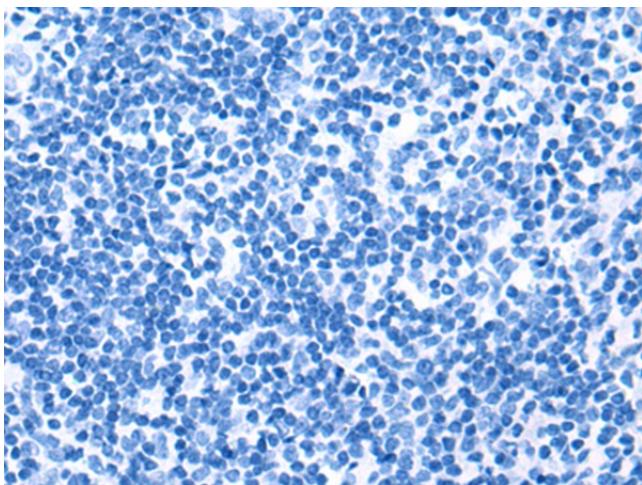
Immunohistochemistry of paraffin-embedded  
Human gastric cancer tissue using TA366666  
(RPUSD2 Antibody) at dilution 1/205 (Original  
magnification:  $\times$ 200)



Immunohistochemistry of paraffin-embedded Human gastric cancer tissue using TA366666 (RPUSD2 Antibody) at dilution 1/205, treated with fusion protein. (Original magnification:  $\times 200$ )



Immunohistochemistry of paraffin-embedded Human tonsil tissue using TA366666 (RPUSD2 Antibody) at dilution 1/205 (Original magnification:  $\times 200$ )



Immunohistochemistry of paraffin-embedded Human tonsil tissue using TA366666 (RPUSD2 Antibody) at dilution 1/205, treated with fusion protein. (Original magnification:  $\times 200$ )