

Product datasheet for **TA366664**

CYP51A1 Rabbit Polyclonal Antibody

Product data:

Product Type:	Primary Antibodies
Applications:	WB
Recommended Dilution:	WB: 500-2000 WB positive control: Rat liver tissue, HepG2 cell, Human testis tissue lysates
Reactivity:	Human, Mouse, Rat
Host:	Rabbit
Isotype:	IgG
Clonality:	Polyclonal
Immunogen:	Fusion protein of human CYP51A1
Formulation:	pH7.4 PBS, 0.05% NaN ₃ , 40% Glycerol
Concentration:	lot specific
Purification:	Antigen affinity purification
Conjugation:	Unconjugated
Storage:	Store at -20°C.
Stability:	1 year
Predicted Protein Size:	57 kDa
Gene Name:	cytochrome P450 family 51 subfamily A member 1
Database Link:	Entrez Gene 1595 Human Q16850

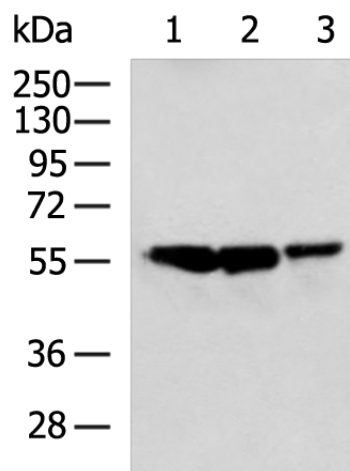
Background: This gene encodes a member of the cytochrome P450 superfamily of enzymes. The cytochrome P450 proteins are monooxygenases which catalyze many reactions involved in drug metabolism and synthesis of cholesterol, steroids and other lipids. This endoplasmic reticulum protein participates in the synthesis of cholesterol by catalyzing the removal of the 14alpha-methyl group from lanosterol. Homologous genes are found in all three eukaryotic phyla, fungi, plants, and animals, suggesting that this is one of the oldest cytochrome P450 genes. Two transcript variants encoding different isoforms have been found for this gene.

Synonyms: CP51; CYP51; CYPL1; CYPLI; LDM; P450-14DM; P450L1; P450LI; P45014DM



[View online »](#)

Product images:



Gel: 8%SDS-PAGE

Lysate: 40 μ g

Lane 1-3: Rat liver tissue

HepG2 cell

Human testis tissue lysates

Primary antibody: TA366664 (CYP51A1 Antibody)
at dilution 1/250

Secondary antibody: Goat anti rabbit IgG at
1/5000 dilution

Exposure time: 10 minutes