

## Product datasheet for **TA366658**

### KLHL29 Rabbit Polyclonal Antibody

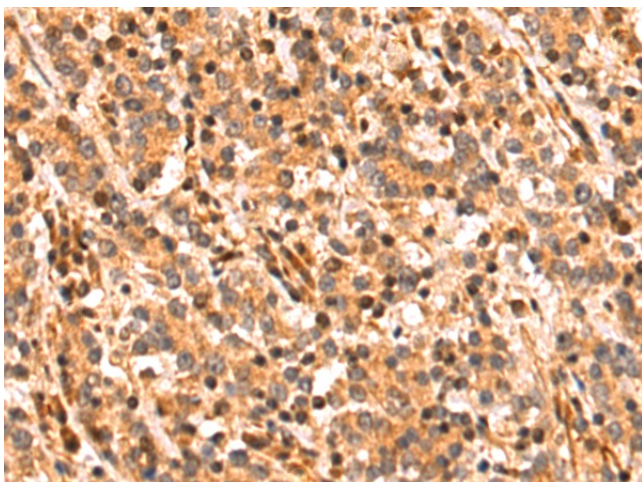
#### Product data:

Product Type:	Primary Antibodies
Applications:	IHC
Recommended Dilution:	IHC: 100-300 Positive control: Human gastric cancer Predicted cell location: Cytoplasm
Reactivity:	Human, Mouse
Host:	Rabbit
Isotype:	IgG
Clonality:	Polyclonal
Immunogen:	Fusion protein of human KLHL29
Formulation:	pH7.4 PBS, 0.05% NaN <sub>3</sub> , 40% Glycerol
Concentration:	lot specific
Purification:	Antigen affinity purification
Conjugation:	Unconjugated
Storage:	Store at -20°C.
Stability:	1 year
Gene Name:	kelch like family member 29
Database Link:	<a href="#">Entrez Gene 114818 Human Q96CT2</a>
Background:	The function of this protein remains unknown.
Synonyms:	KBTBD9; KIAA1921

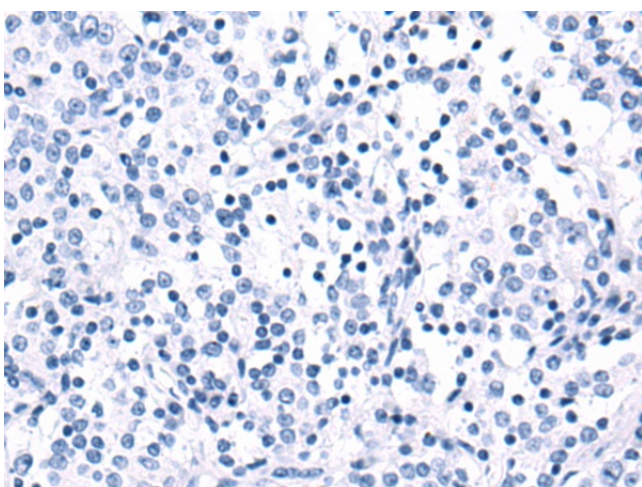


[View online »](#)

## Product images:



Immunohistochemistry of paraffin-embedded Human gastric cancer tissue using TA366658 (KLHL29 Antibody) at dilution 1/90 (Original magnification: ×200)



Immunohistochemistry of paraffin-embedded Human gastric cancer tissue using TA366658 (KLHL29 Antibody) at dilution 1/90, treated with fusion protein. (Original magnification: ×200)