

Product datasheet for **TA366657**

ZNF 639 (ZNF639) Rabbit Polyclonal Antibody

Product data:

Product Type:	Primary Antibodies
Applications:	IHC, WB
Recommended Dilution:	WB: 200-1000 WB positive control: Human breast tissue lysate IHC: 100-300 Positive control: Human gastric cancer Predicted cell location: Nucleus
Reactivity:	Human, Mouse, Rat
Host:	Rabbit
Isotype:	IgG
Clonality:	Polyclonal
Immunogen:	Fusion protein of human ZNF639
Formulation:	pH7.4 PBS, 0.05% NaN ₃ , 40% Glycerol
Concentration:	lot specific
Purification:	Antigen affinity purification
Conjugation:	Unconjugated
Storage:	Store at -20°C.
Stability:	1 year
Predicted Protein Size:	56 kDa
Gene Name:	zinc finger protein 639
Database Link:	Entrez Gene 51193 Human Q9UID6

Background: This gene encodes a member of the Kruppel-like zinc finger family of proteins. Amplification and overexpression of this gene have been observed in esophageal squamous cell carcinoma. The encoded protein has been shown to bind DNA in a sequence-specific manner and may regulate HIV-1 gene expression. Alternative splicing results in multiple transcript variants.

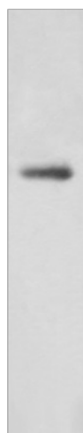
Synonyms: 6230400O18Rik; ANC-2H01; ANC_2H01; Kruppel-like; ZASC1



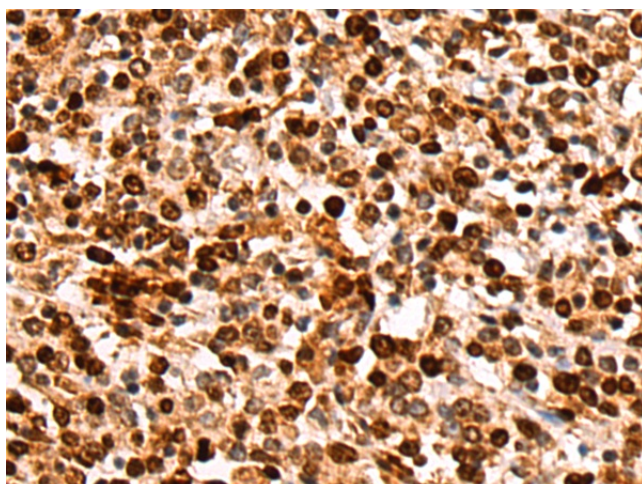
[View online »](#)

Product images:

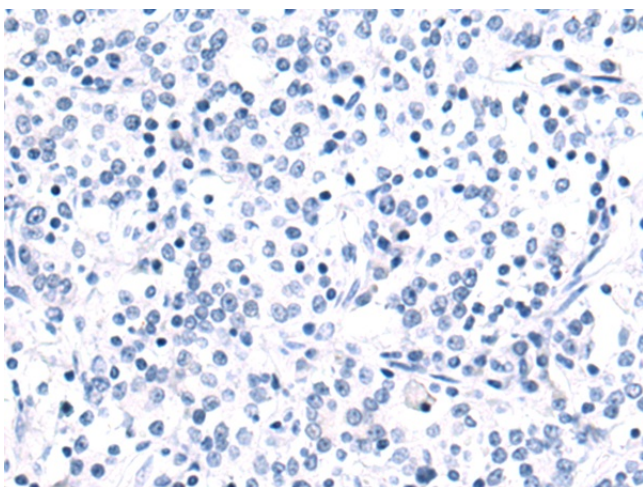
kDa
130—
95—
72—
55—
36—
28—
17—



Gel: 8%SDS-PAGE
Lysate: 40 µg
Lane: Human breast tissue lysate
Primary antibody: TA366657 (ZNF639 Antibody)
at dilution 1/300
Secondary antibody: Goat anti rabbit IgG at
1/5000 dilution
Exposure time: 2 minutes



Immunohistochemistry of paraffin-embedded
Human gastric cancer tissue using TA366657
(ZNF639 Antibody) at dilution 1/85 (Original
magnification: ×200)



Immunohistochemistry of paraffin-embedded Human gastric cancer tissue using TA366657 (ZNF639 Antibody) at dilution 1/85, treated with fusion protein. (Original magnification: ×200)