

Product datasheet for **TA366638**

GLT8D1 Rabbit Polyclonal Antibody

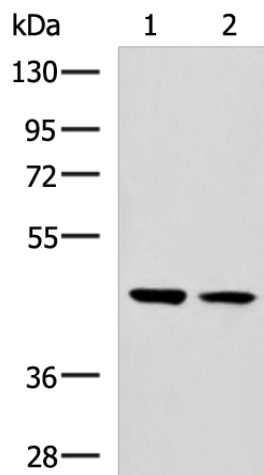
Product data:

Product Type:	Primary Antibodies
Applications:	IHC, WB
Recommended Dilution:	WB: 500-2000 WB positive control: 293T, LO2 cell lysates IHC: 100-300 Positive control: Human liver cancer Predicted cell location: Cytoplasm
Reactivity:	Human, Mouse, Rat
Host:	Rabbit
Isotype:	IgG
Clonality:	Polyclonal
Immunogen:	Fusion protein of human GLT8D1
Formulation:	pH7.4 PBS, 0.05% NaN ₃ , 40% Glycerol
Concentration:	lot specific
Purification:	Antigen affinity purification
Conjugation:	Unconjugated
Storage:	Store at -20°C.
Stability:	1 year
Predicted Protein Size:	42 kDa
Gene Name:	glycosyltransferase 8 domain containing 1
Database Link:	Entrez Gene 55830 Human Q68CQ7
Background:	This gene encodes a member of the glycosyltransferase family. The specific function of this protein has not been determined. Alternative splicing results in multiple transcript variants of this gene
Synonyms:	AD-017; DKFZp781O20198; FLJ14611; GALA4A; MSTP139

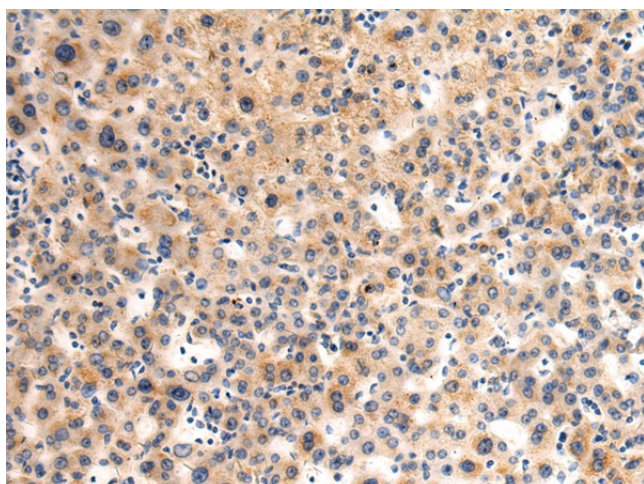


[View online »](#)

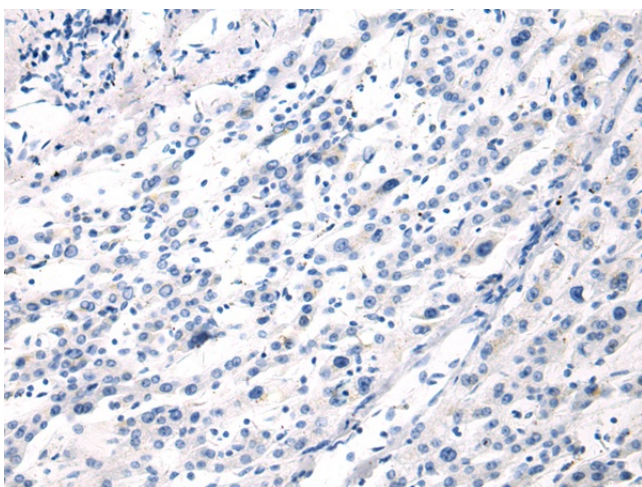
Product images:



Gel: 8%SDS-PAGE
Lysate: 40 μ g
Lane 1-2: 293T
LO2 cell lysates
Primary antibody: TA366638 (GLT8D1 Antibody)
at dilution 1/800
Secondary antibody: Goat anti rabbit IgG at
1/5000 dilution
Exposure time: 20 seconds



Immunohistochemistry of paraffin-embedded
Human liver cancer tissue using TA366638
(GLT8D1 Antibody) at dilution 1/90 (Original
magnification: \times 200)



Immunohistochemistry of paraffin-embedded Human liver cancer tissue using TA366638 (GLT8D1 Antibody) at dilution 1/90, treated with fusion protein. (Original magnification: ×200)