

Product datasheet for **TA366635**

GSDMA Rabbit Polyclonal Antibody

Product data:

Product Type:	Primary Antibodies
Applications:	IHC, WB
Recommended Dilution:	WB: 500-2000 WB positive control: LO2 and 293T cell lysates IHC: 100-200 Positive control: Human colorectal cancer Predicted cell location: Cytoplasm
Reactivity:	Human, Mouse
Host:	Rabbit
Isotype:	IgG
Clonality:	Polyclonal
Immunogen:	Fusion protein of human GSDMA
Formulation:	pH7.4 PBS, 0.05% NaN ₃ , 40% Glycerol
Concentration:	lot specific
Purification:	Antigen affinity purification
Conjugation:	Unconjugated
Storage:	Store at -20°C.
Stability:	1 year
Predicted Protein Size:	49 kDa
Gene Name:	gasdermin A
Database Link:	Entrez Gene 284110 Human Q96QA5



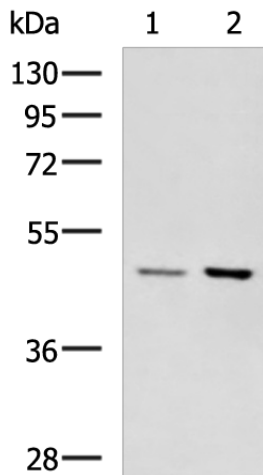
[View online »](#)

Background:

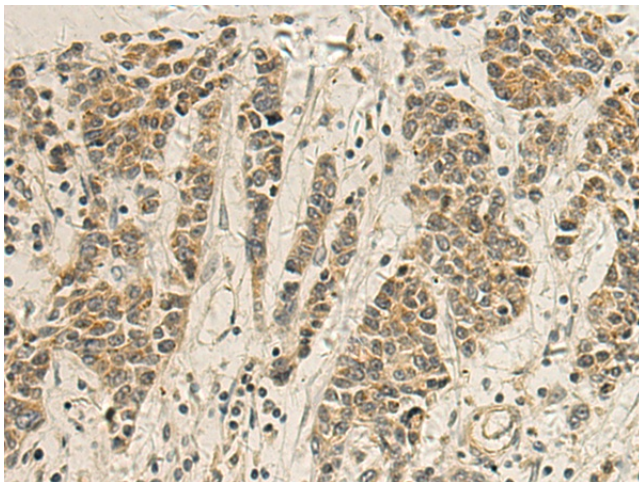
May promote pyroptosis (Probable). Upon cleavage in vitro of genetically engineered GSDMA, the released N-terminal moiety binds to some types of lipids, such as possibly phosphatidylinositol (4,5)-bisphosphate. Homooligomerizes within the membrane and forms pores of 10 -15 nanometers (nm) of inner diameter, triggering cell death. Also binds to bacterial and mitochondrial lipids, including cardiolipin, and exhibits bactericidal activity (PubMed:27281216). The physiological relevance of these observations is unknown (Probable).

Synonyms:

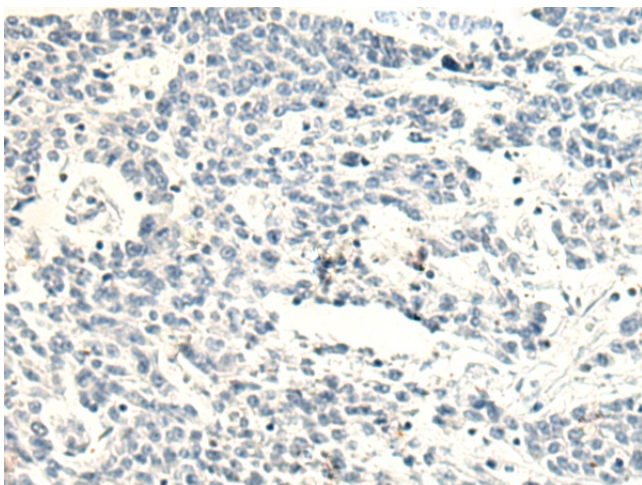
FKSG9; FLJ39120; gasdermin; Gasdermin-1; GSDM; GSDM1; MGC129596

Product images:


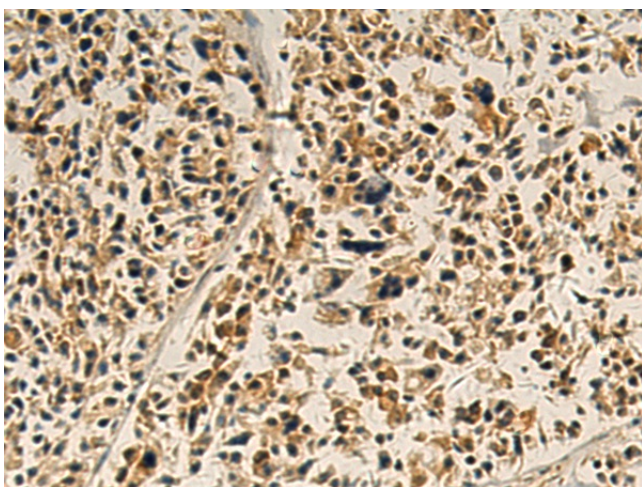
Gel: 8%SDS-PAGE
 Lysate: 40 µg
 Lane 1-2: LO2 and 293T cell lysates
 Primary antibody: TA366635 (GSDMA Antibody) at dilution 1/800
 Secondary antibody: Goat anti rabbit IgG at 1/5000 dilution
 Exposure time: 5 minutes



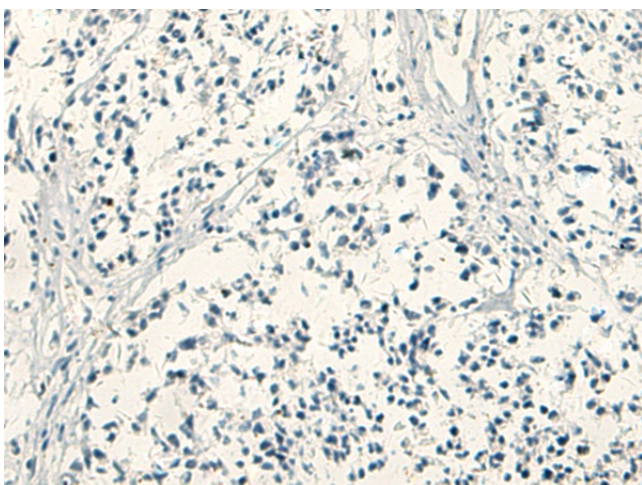
Immunohistochemistry of paraffin-embedded Human colorectal cancer tissue using TA366635 (GSDMA Antibody) at dilution 1/115 (Original magnification: ×200)



Immunohistochemistry of paraffin-embedded Human colorectal cancer tissue using TA366635 (GSDMA Antibody) at dilution 1/115, treated with fusion protein. (Original magnification: $\times 200$)



Immunohistochemistry of paraffin-embedded Human ovarian cancer tissue using TA366635 (GSDMA Antibody) at dilution 1/115 (Original magnification: $\times 200$)



Immunohistochemistry of paraffin-embedded Human ovarian cancer tissue using TA366635 (GSDMA Antibody) at dilution 1/115, treated with fusion protein. (Original magnification: $\times 200$)