

Product datasheet for **TA366633**

KBTBD8 Rabbit Polyclonal Antibody

Product data:

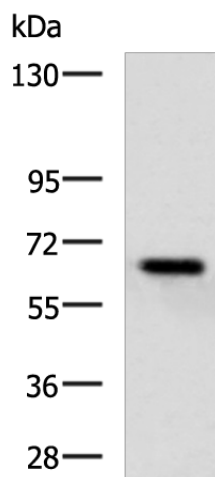
Product Type:	Primary Antibodies
Applications:	WB
Recommended Dilution:	WB: 1000-5000 WB positive control: NIH/3T3 cell lysate
Reactivity:	Human, Mouse, Rat
Host:	Rabbit
Isotype:	IgG
Clonality:	Polyclonal
Immunogen:	Fusion protein of human KBTBD8
Formulation:	pH7.4 PBS, 0.05% NaN ₃ , 40% Glycerol
Concentration:	lot specific
Purification:	Antigen affinity purification
Conjugation:	Unconjugated
Storage:	Store at -20°C.
Stability:	1 year
Predicted Protein Size:	69 kDa
Gene Name:	kelch repeat and BTB domain containing 8
Database Link:	Entrez Gene 84541 Human Q8NFY9

Background: Substrate-specific adapter of a BCR (BTB-CUL3-RBX1) E3 ubiquitin ligase complex that acts as a regulator of neural crest specification. The BCR(KBTBD8) complex acts by mediating monoubiquitination of NOLC1 and TCOF1: monoubiquitination promotes the formation of a NOLC1-TCOF1 complex that acts as a platform to connect RNA polymerase I with enzymes responsible for ribosomal processing and modification, leading to remodel the translational program of differentiating cells in favor of neural crest specification.

Synonyms: FLJ57592; KIAA1842; TA-KRP; TAKRP



[View online »](#)

Product images:


Gel: 6%SDS-PAGE
 Lysate: 40 µg
 Lane: NIH/3T3 cell lysate
 Primary antibody: TA366633 (KBTBD8 Antibody)
 at dilution 1/1000
 Secondary antibody: Goat anti rabbit IgG at
 1/5000 dilution
 Exposure time: 5 seconds