

Product datasheet for **TA366623**

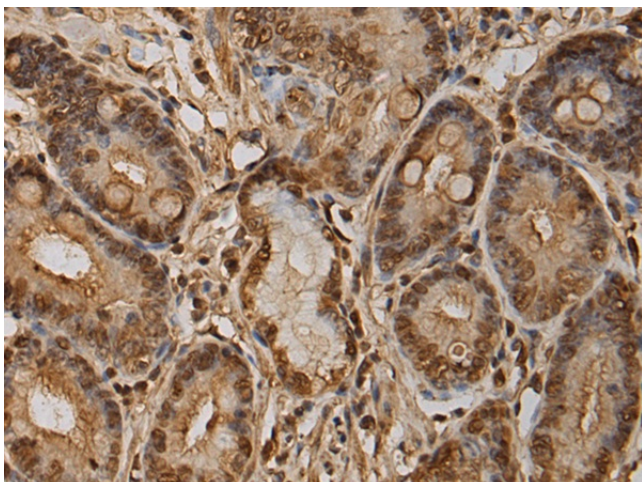
LBH Rabbit Polyclonal Antibody

Product data:

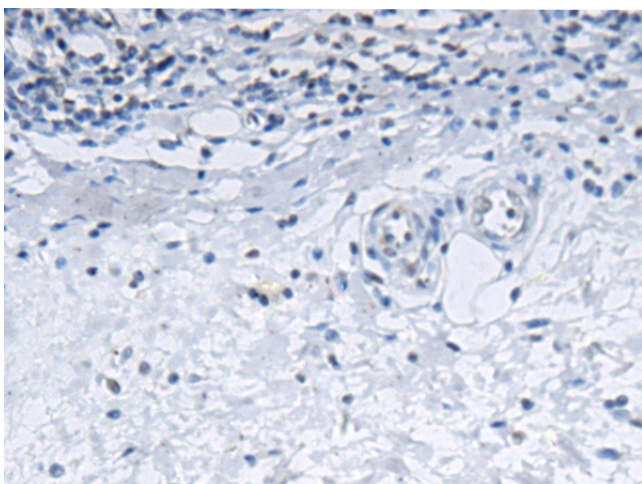
Product Type:	Primary Antibodies
Applications:	IHC
Recommended Dilution:	IHC: 200-400 Positive control: Human gastric cancer Predicted cell location: Nucleus and Cytoplasm
Reactivity:	Human, Mouse
Host:	Rabbit
Isotype:	IgG
Clonality:	Polyclonal
Immunogen:	Fusion protein of human LBH
Formulation:	pH7.4 PBS, 0.05% NaN ₃ , 40% Glycerol
Concentration:	lot specific
Purification:	Antigen affinity purification
Conjugation:	Unconjugated
Storage:	Store at -20°C.
Stability:	1 year
Gene Name:	limb bud and heart development
Database Link:	Entrez Gene 81606 Human Q53QV2
Background:	Transcriptional activator which may act in mitogen-activated protein kinase signaling pathway.
Synonyms:	DKFZp566j091; hLBH; MGC104312; MGC163287



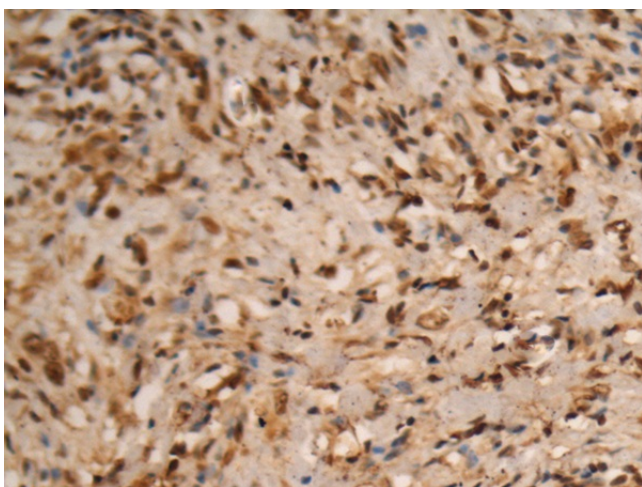
[View online »](#)

Product images:

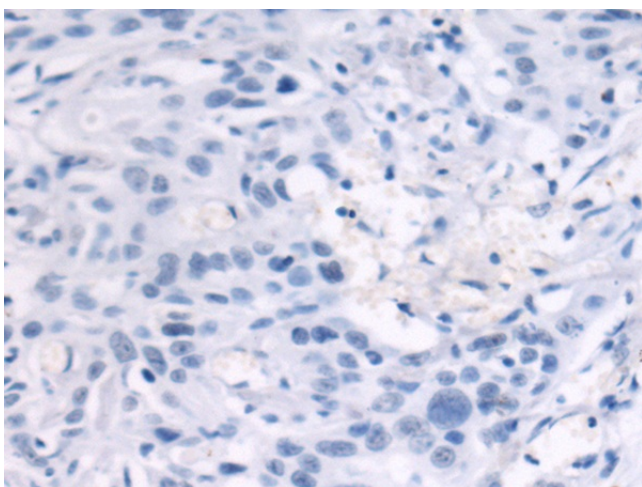
Immunohistochemistry of paraffin-embedded Human gastric cancer tissue using TA366623 (LBH Antibody) at dilution 1/210 (Original magnification: ×200)



Immunohistochemistry of paraffin-embedded Human gastric cancer tissue using TA366623 (LBH Antibody) at dilution 1/210, treated with fusion protein. (Original magnification: ×200)



Immunohistochemistry of paraffin-embedded Human esophagus cancer tissue using TA366623 (LBH Antibody) at dilution 1/210 (Original magnification: $\times 200$)



Immunohistochemistry of paraffin-embedded Human esophagus cancer tissue using TA366623 (LBH Antibody) at dilution 1/210, treated with fusion protein. (Original magnification: $\times 200$)